

Job Name: 26-1510 West Railroad Ave  
 Job Location: Elizabethtown, KY  
 Contractor: Schroeder Construction, Inc.

Plant: 100

3/30/2026 11:26:33 AM

Tech: Jared - A

PC: Celina Goff



**Structure ID: 8 DBI13G**

**P2 BX024036-08LD08-15X27**

**CB FLAT TOP 8"W w/15"x27" HOLE F/F**

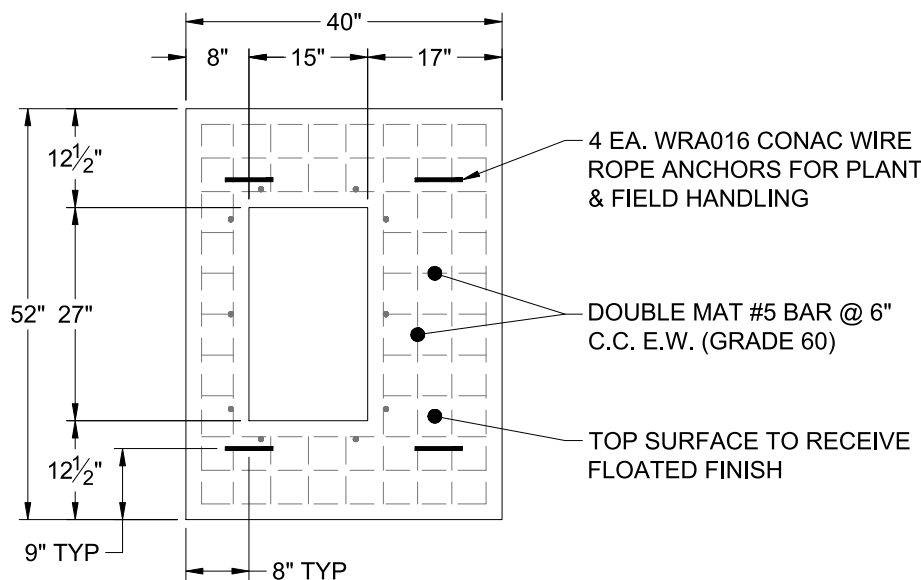
- P3) 15" x 27" - P.I.P. - BY OTHERS - 8"
- P2) 24" x 36" - CB FLAT TOP 8"W w/15"x27" HOLE F/F - 8"
- P1) 24" x 36" - BOX BASE 8inW, 8inF F/n - 42"
- 1) CASTING - HOE KY-230-G F/G (GRADE)
- 1) 24" x 36" - SGL 1"x14.5' Butyl
- 1) 15" x 27" - SGL 1"x14.5' Butyl
- 1) Hole - 26

0 lb  
 1124 lb  
 5247 lb  
 237 lb  
 0 lb  
 0 lb  
 0 lb  
 -----  
 0 lb

Structure Total: 6608 lb

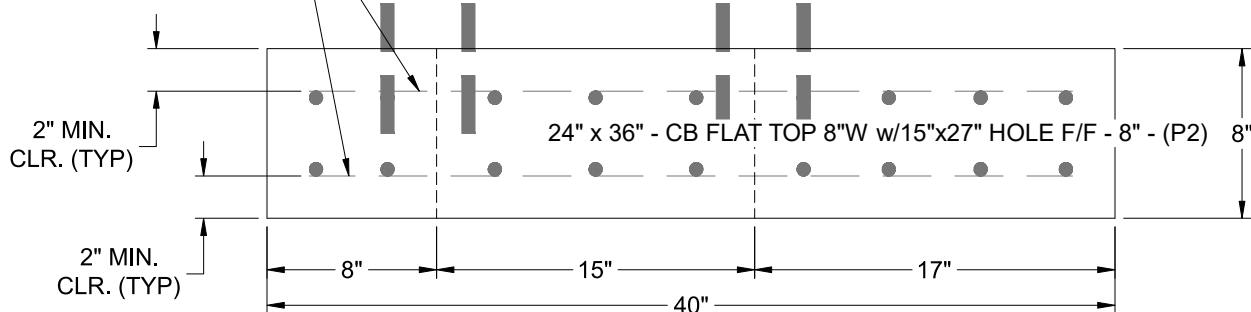
Structure Notes:

1. PER KYTC DBI TYPE 13G / ASTM C-913 SPECS
2. CONCRETE: 4,000 PSI AT 28 DAYS
3. REINFORCEMENT: DOUBLE MAT #5 BAR @ 6" C.C. E.W. (GRADE 60) - 2" MIN. REBAR CLEARANCE (TYP)
4. HOE KY-230-G FRAME & GRATE SUPPLIED BY ICAST
5. WET STICK #5 BAR @ 12" C.C. E.W. (GRADE 60) 6" OUT TOP OF FLAT LID AROUND 15" X 27" OPENING FOR FIELD POUR TIE-IN
6. LIFTERS: 4 EA. WRA015 CONAC WIRE ROPE ANCHORS FOR PLANT & FIELD HANDLING
7. TOP SURFACE TO RECEIVE FLOATED FINISH



DOUBLE MAT #5 BAR @ 6" C.C. E.W. (GRADE 60)

WET STICK 10" #5 BARS @ 12" C.C. E.W. (GRADE 60) AROUND 15" X 27" OPENING, MIN. 4" PENETRATION - 10 EA.



Coating (Int):  
 Coating (Ext):

Seam Up: Flat  
 Seam Dn: Flat

Wall Thickness: 8"

Height (Ext): 8"

Weight (Net): 1124 lb  
 Volume (Net): 0.29cu.yd