

Job Name: 26-1510 West Railroad Ave
 Job Location: Elizabethtown, KY
 Contractor: Schroeder Construction, Inc.

Plant: 100

3/30/2026 11:26:15 AM

Tech: Jared - A

PC: Celina Goff



Structure ID: 8 DBI13G

P1 BX2436-08BA42

BOX BASE 8inW, 8inF F/n

- P3) 15" x 27" - P.I.P. - BY OTHERS - 8"
- P2) 24" x 36" - CB FLAT TOP 8"W w/15"x27" HOLE F/F - 8"
- P1) 24" x 36" - BOX BASE 8inW, 8inF F/n - 42"
- 1) CASTING - HOE KY-230-G F/G (GRADE)
- 1) 24" x 36" - SGL 1"x14.5' Butyl
- 1) 15" x 27" - SGL 1"x14.5' Butyl
- 1) Hole - 26

- 0 lb
- 1124 lb
- 5247 lb
- 237 lb
- 0 lb
- 0 lb
- 0 lb
- 0 lb

Structure Total: 6608 lb

Structure Notes:

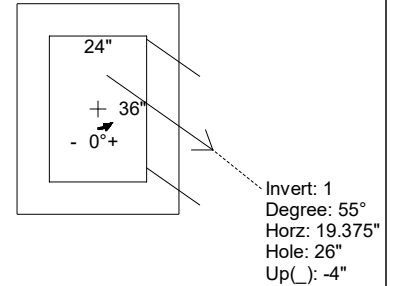
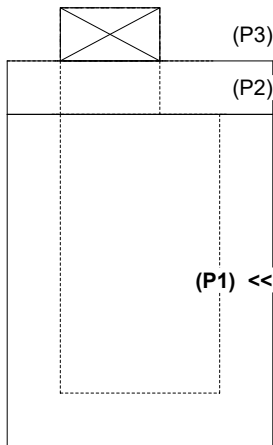
1. PER KYTC DBI TYPE 13G / ASTM C-913 SPECS
2. CONCRETE: 4,000 PSI AT 28 DAYS
3. REINFORCEMENT: #5 BAR @ 12" C.C. E.W. (GRADE 60) - 2" MIN. REBAR CLEARANCE (TYP)
4. NO STORM INVERT
5. NO STEPS
6. HOE KY-230-G FRAME & GRATE SUPPLIED BY ICAST

Rim: 729.4' Rim to Invert: 4.9' Slack: 0.8" Sump: 0" Step Position:

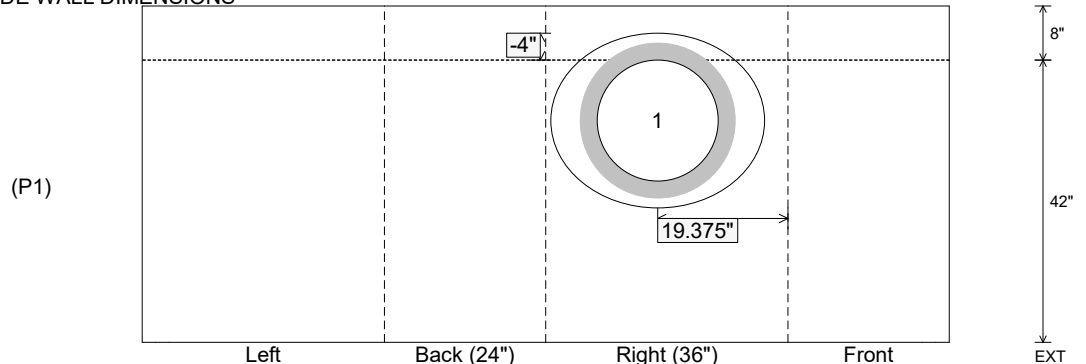
Position	Elev	Angle	Ext. (cw)	Pipe	Pipe OD	Connector	Hole	Horz Size	Up ()	Offset
Invert 1	724.5'	55°	21.75"	18" RCP B WALL	23"	Hole 26	26"	31.74"	-4"	8"
Invert 2										
Invert 3										
Invert 4										
Invert 5										
Invert 6										
Invert 7										
Invert 8										

RIGHT-SIDE UP VIEW (int. dimensions)

UPSIDE-DOWN VIEW (int. dimensions)



INSIDE WALL DIMENSIONS



Coating (Int):
Coating (Ext):

Seam Up: Flat
Seam Dn: n/a

Wall Thickness: 8"
Floor Height: 8"

Height (Int): 42"
Height (Ext): 50"

Weight (Net): 5247 lb
Volume (Net): 1.34cu.yd