

**Job Name: 26-1510 West Railroad Ave**  
**Job Location: Elizabethtown, KY**  
**Contractor: Schroeder Construction, Inc.**

PC: Celina Goff  
 TECH: Jared - A  
 Plant: 100



Structure ID: **7 DBI13G**  
 Spec: KYTC  
 Type: DBI TYPE 13G  
 Size: 24" x 30"

Rim: 728.95'  
 Invert: 723.5'  
 Rim to Invert: 5.45'

Sump: 0"  
 Floor (Top): 723.5'  
 Floor Height: 8"

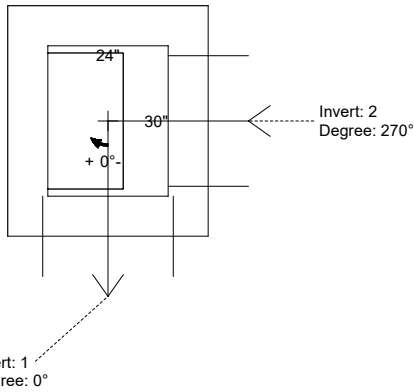
Floor (Bot): 722.833'  
 Overall Height: 6'  
 Slack: 1.4"

**Structure Notes:**

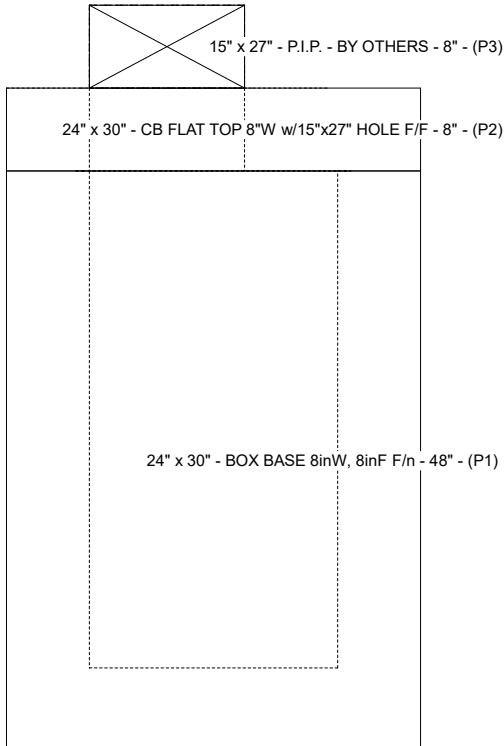
- PER KYTC DBI TYPE 13G / ASTM C-913 SPECS
- CONCRETE: 4,000 PSI AT 28 DAYS
- REINFORCEMENT:  
 - FLAT LID: DOUBLE MAT #5 BAR @ 6" C.C. E.W. (GRADE 60)  
 - PIPE CHAMBER: #5 BAR @ 12" C.C. E.W. (GRADE 60)
- NO STORM INVERT
- NO STEPS
- HOE KY-230-G FRAME & GRATE SUPPLIED BY ICAST
- STUB #5 BAR @ 12" C.C. E.W. (GRADE 60) 6" OUT TOP OF FLAT LID AROUND 15" X 27" OPENING FOR FIELD POUR TIE-IN

**STRUCTURE SUMMARY:**

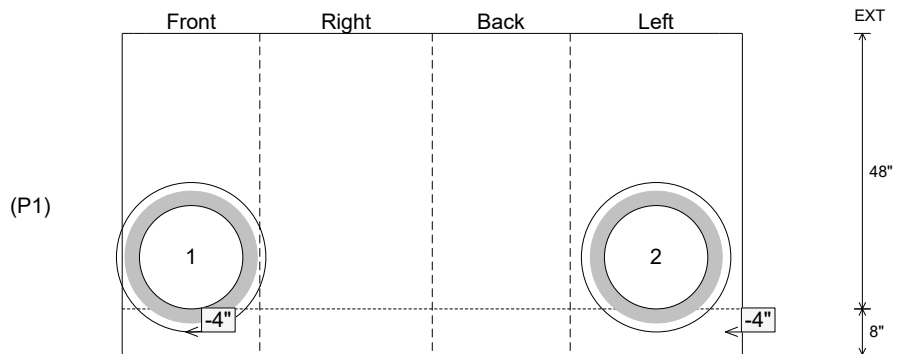
- P3) 15" x 27" - P.I.P. - BY OTHERS - 8" 0 lb
- P2) 24" x 30" - CB FLAT TOP 8"W w/15"x27" HOLE F/F - 8" 963 lb
- P1) 24" x 30" - BOX BASE 8inW, 8inF F/n - 48" 5123 lb
- 1) CASTING - HOE KY-230-G F/G (GRADE) 237 lb
- 1) 24" x 30" - Conseal CS-102 1.00" 0 lb
- 1) 15" x 27" - Conseal CS-102 1.00" 0 lb
- 2) Hole - 26 0 lb
- Structure Total: 6323 lb



Position	Elev	Angle	Pipe	Pipe OD	Hole	Connector	Up (")	Ref
Rim	728.95'							
Reducer								
Invert 1	723.5'	0°	18" RCP B WALL	23"	26"	Hole 26	-4"	P1
Invert 2	723.5'	270°	18" RCP B WALL	23"	26"	Hole 26	-4"	P1
Invert 3								
Invert 4								
Invert 5								
Invert 6								
Invert 7								
Invert 8								



**Cast (Int. Dim.) - Interior Dimensions**



Submittal Drawing  
 3/30/2026 11:17:54 AM

SUBMITTAL  
 APPROVED BY: