

Job Name: 26-1510 West Railroad Ave
 Job Location: Elizabethtown, KY
 Contractor: Schroeder Construction, Inc.

Plant: 100

3/30/2026 11:26:34 AM

Tech: Jared - A

PC: Celina Goff



Structure ID: 6 DBI13G

P2 BX024030-08LD08-15X27

CB FLAT TOP 8"W w/15"x27" HOLE F/F

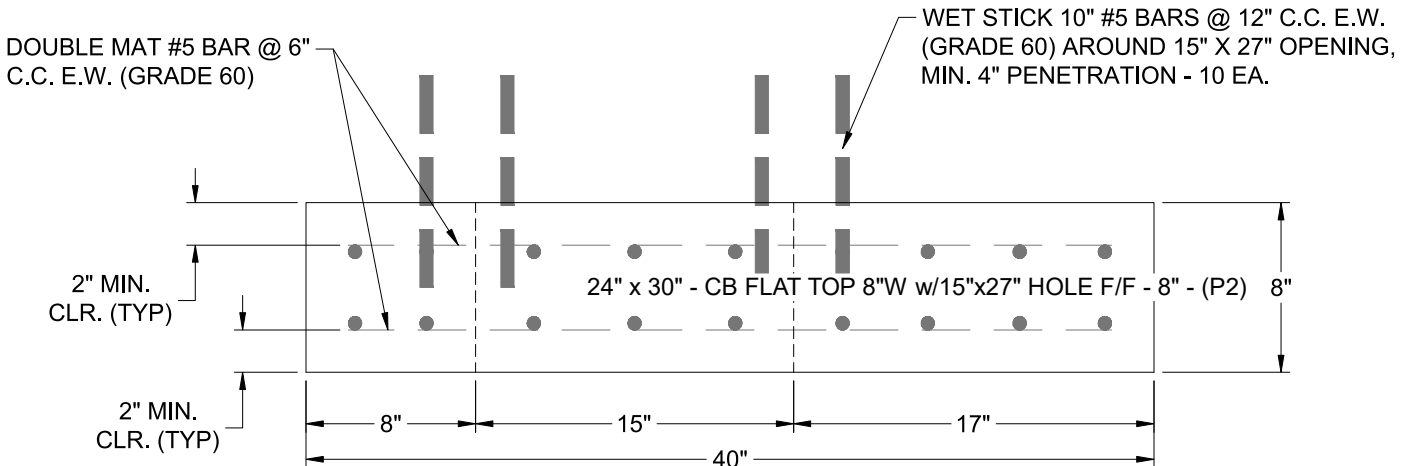
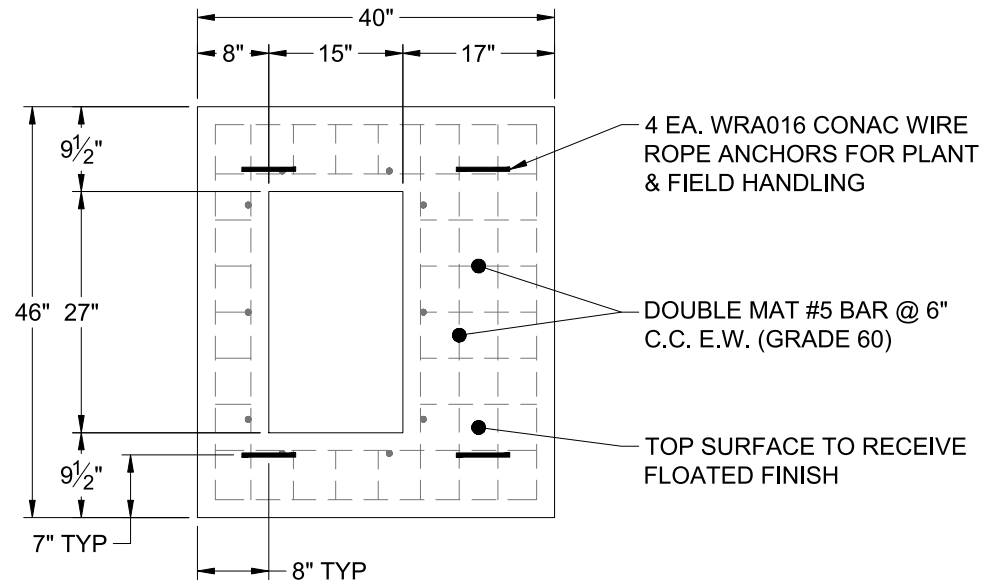
- P3) 15" x 27" - P.I.P. - BY OTHERS - 8"
- P2) 24" x 30" - CB FLAT TOP 8"W w/15"x27" HOLE F/F - 8"
- P1) 24" x 30" - BOX BASE 8inW, 8inF, Variable Ht F/n - 39"
- 1) CASTING - HOE KY-230-G F/G (GRADE)
- 1) 24" x 30" - Conseal CS-102 1.00"
- 1) 15" x 27" - Conseal CS-102 1.00"
- 1) Hole - 26

0 lb
 963 lb
 4633 lb
 237 lb
 0 lb
 0 lb
 0 lb

 5833 lb

Structure Total:

- Structure Notes:
1. PER KYTC DBI TYPE 13G / ASTM C-913 SPECS
 2. CONCRETE: 4,000 PSI AT 28 DAYS
 3. REINFORCEMENT: DOUBLE MAT #5 BAR @ 6" C.C. E.W. (GRADE 60) - 2" MIN. REBAR CLEARANCE (TYP)
 4. HOE KY-230-G FRAME & GRATE SUPPLIED BY ICAST
 5. WET STICK #5 BAR @ 12" C.C. E.W. (GRADE 60) 6" OUT TOP OF FLAT LID AROUND 15" X 27" OPENING FOR FIELD POUR TIE-IN
 6. LIFTERS: 4 EA. WRA015 CONAC WIRE ROPE ANCHORS FOR PLANT & FIELD HANDLING
 7. TOP SURFACE TO RECEIVE FLOATED FINISH



Coating (Int): Coating (Ext):	Seam Up: Flat Seam Dn: Flat	Wall Thickness: 8"	Height (Ext): 8"	Weight (Net): 963 lb Volume (Net): 0.25cu.yd
----------------------------------	--------------------------------	--------------------	------------------	---