

Job Name: 26-1510 West Railroad Ave
 Job Location: Elizabethtown, KY
 Contractor: Schroeder Construction, Inc.

Plant: 100

3/30/2026 11:26:33 AM

Tech: Jared - A

PC: Celina Goff



Structure ID: 5 ST-MH

P2 MH060LD13

MH FLAT TOP w/ 24" ECC Hole F/G

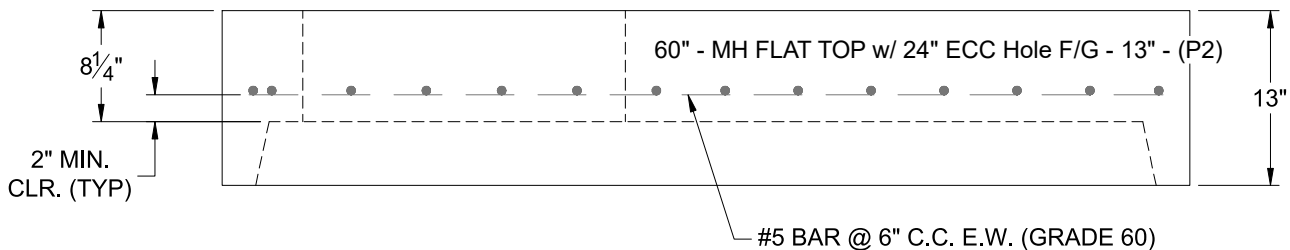
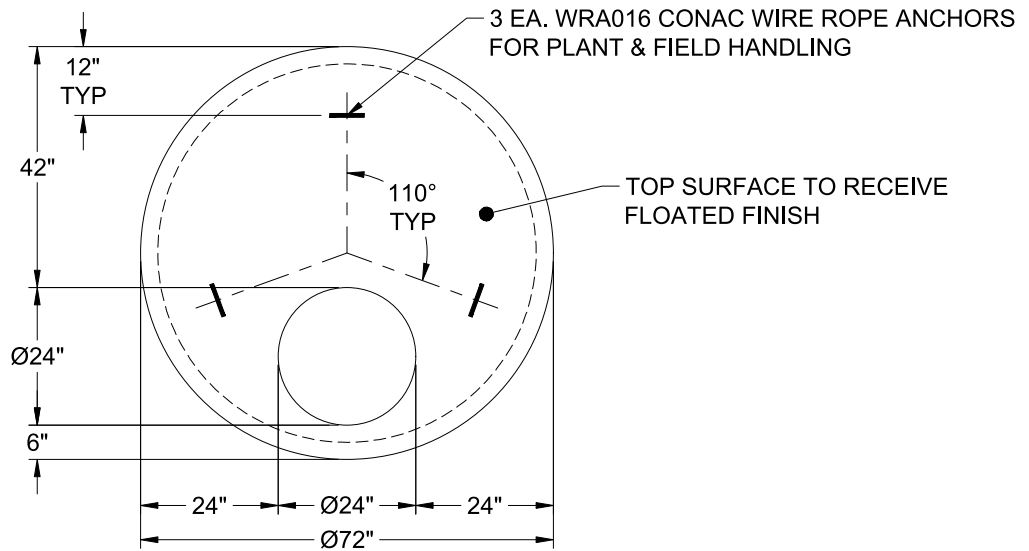
- P3) 24" - CASTING HEIGHT - 8"
- P2) 60" - MH FLAT TOP w/ 24" ECC Hole F/G - 13"
- P1) 60" - MH BASE Custom Ht T/n - 35"
- 1) CASTING - HOE KY-510 F/C (KY TY.2)
- 1) 60" - Conseal CS-102 1.00"
- 3) Hole - 26
- 3) MH Step ML-10-TDS-NCR - 10"

- 0 lb
- 2869 lb
- 5562 lb
- 510 lb
- 0 lb
- 0 lb
- 0 lb
- 0 lb

Structure Total: 8941 lb

Structure Notes:

1. PER ASTM C-478 SPECS
2. CONCRETE: 4,000 PSI AT 28 DAYS
3. REINFORCEMENT: #5 BAR @ 6" C.C. E.W. (GRADE 60) - 2" MIN. REBAR CLEARANCE (TYP)
4. HOE KY-510 FRAME & COVER "STORM" SUPPLIED BY ICAST
5. LIFTERS: 3 EA. WRA016 CONAC WIRE ROPE ANCHORS FOR PLANT & FIELD HANDLING
6. TOP SURFACE TO RECEIVE FLOATED FINISH



Coating (Int): Coating (Ext):	Seam Up: Flat Seam Dn: Groove	Wall Thickness: 6"	Height (Ext): 13"	Weight (Net): 2869 lb Volume (Net): 0.73cu.yd
----------------------------------	----------------------------------	--------------------	-------------------	--