

Job Name: 26-1502 ADS Bluegrass Meadows Sec. 7A
 Job Location: Mount Washington, KY
 Contractor: ADS Advanced Drainage Systems, Inc.

Plant: Beaver Dam
 3/6/2026 1:36:30 PM

Tech: S. Felletter
 PC: C. Goff



Structure ID: 2

P1A MH096BAVF

MH BASE Custom Ht T/n

- P5) 24" - CASTING HEIGHT - 7"
- P4) 96" - MH FLAT TOP w/ 24" Conc. Hole F/G - 17"
- P3) 96" - MH RISER Custom Ht T/G - 69"
- P2) 96" - MH RISER Custom Ht T/G - 69"
- P1) 96" - MH BASE Custom Ht T/n - 25"
- 1) ASSEMBLY REQUIRED - BRACKETS ONLY
- 1) CASTING - HOE MC-375 F/C Storm
- 3) 96" - Conseal CS-102 1.00" (Double)
- 2) Hole - 16

0 lb
 10473 lb
 16863 lb
 17189 lb
 13080 lb
 0 lb
 271 lb
 0 lb
 0 lb
 0 lb

Structure Total: 57876 lb

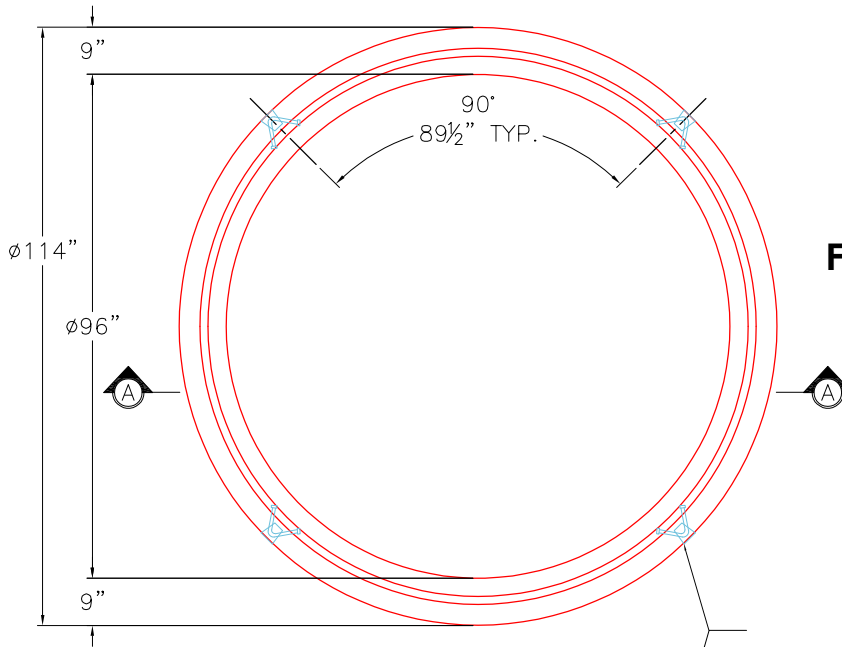
Structure Notes:

1. PER ASTM C478 SPECIFICATIONS.
 2. CONCRETE = 4,000 PSI AT 28 DAYS.
 3. CASTING BY ICAST (HOE MC-375 F/C "STORM").
 4. LIFTING ANCHORS TO BE INSTALLED ON THE OUTSIDE OF THE STRUCTURE.
 5. ASSEMBLY REQUIRED - BRACKETS ONLY.
- REINFORCING PER ASTM A615 (GRADE 60).
 - TOP SLAB (As .62) #5 BARS AT 6" C.C.E.W.
 - RISER/WALLS (As .24)
 - FLOOR (As .47) #5 BARS AT 8" C.C.E.W.

Rim: 696.5' Rim to Invert: 4.65' Slack: 0.8" Sump: 132" Step Position:

GENERAL NOTES:

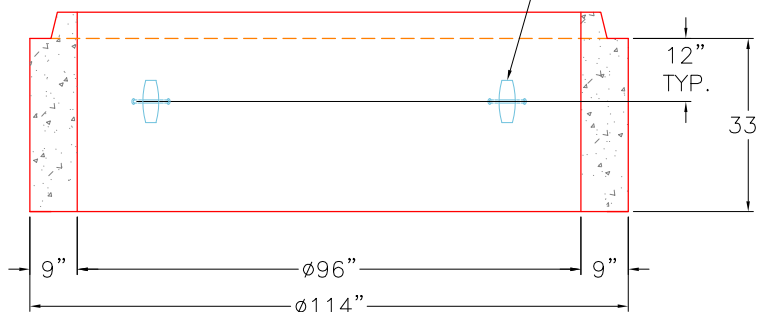
1. MANUFACTURED TO ASTM C-478 (LATEST REVISION).
2. CONCRETE 5,000 PSI AT 28 DAYS.
3. REINFORCING: WALLS - WWF AREA 0.24
 FLOOR - AREA 0.27 - #5 BAR @ 8" C/C
4. WEIGHT: TOTAL - 13,080 LBS.
 FIRST POUR - 7,972 LBS
 SECOND POUR - 5,108 LBS



FIRST POUR DRAWING

TOP VIEW

4 EA. CONAC 6CA14 ANCHORS REQUIRED FOR HANDLING.



SECTION A-A

Coating (Int):
 Coating (Ext):

Seam Up: Tongue
 Seam Dn: n/a

Wall Thickness: 9"
 Floor Height: 8"

Height (Int): 25"
 Height (Ext): 33"

Weight (Net): 13080 lb
 Volume (Net): 3.34cu.yd

Job Name: 26-1502 ADS Bluegrass Meadows Sec. 7A
 Job Location: Mount Washington, KY
 Contractor: ADS Advanced Drainage Systems, Inc.

Plant: Beaver Dam
 3/6/2026 1:36:30 PM

Tech: S. Felletter
 PC: C. Goff



Structure ID: 2

P1B MH096BAVF

MH BASE Custom Ht T/n

- P5) 24" - CASTING HEIGHT - 7"
- P4) 96" - MH FLAT TOP w/ 24" Conc. Hole F/G - 17"
- P3) 96" - MH RISER Custom Ht T/G - 69"
- P2) 96" - MH RISER Custom Ht T/G - 69"
- P1) 96" - MH BASE Custom Ht T/n - 25"
- 1) ASSEMBLY REQUIRED - BRACKETS ONLY
- 1) CASTING - HOE MC-375 F/C Storm
- 3) 96" - Conseal CS-102 1.00" (Double)
- 2) Hole - 16

0 lb
 10473 lb
 16863 lb
 17189 lb
 13080 lb
 0 lb
 271 lb
 0 lb
 0 lb
 0 lb

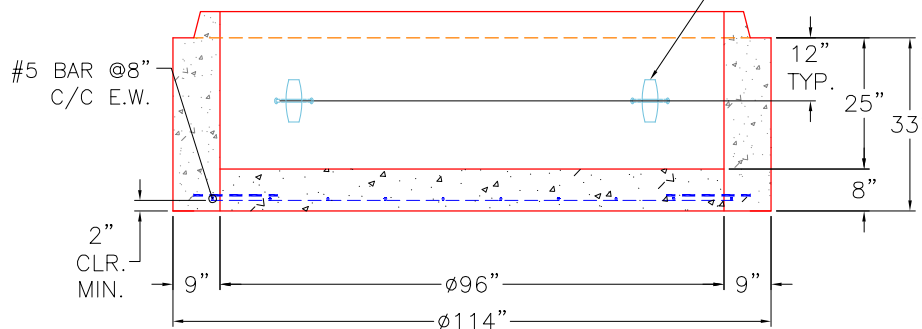
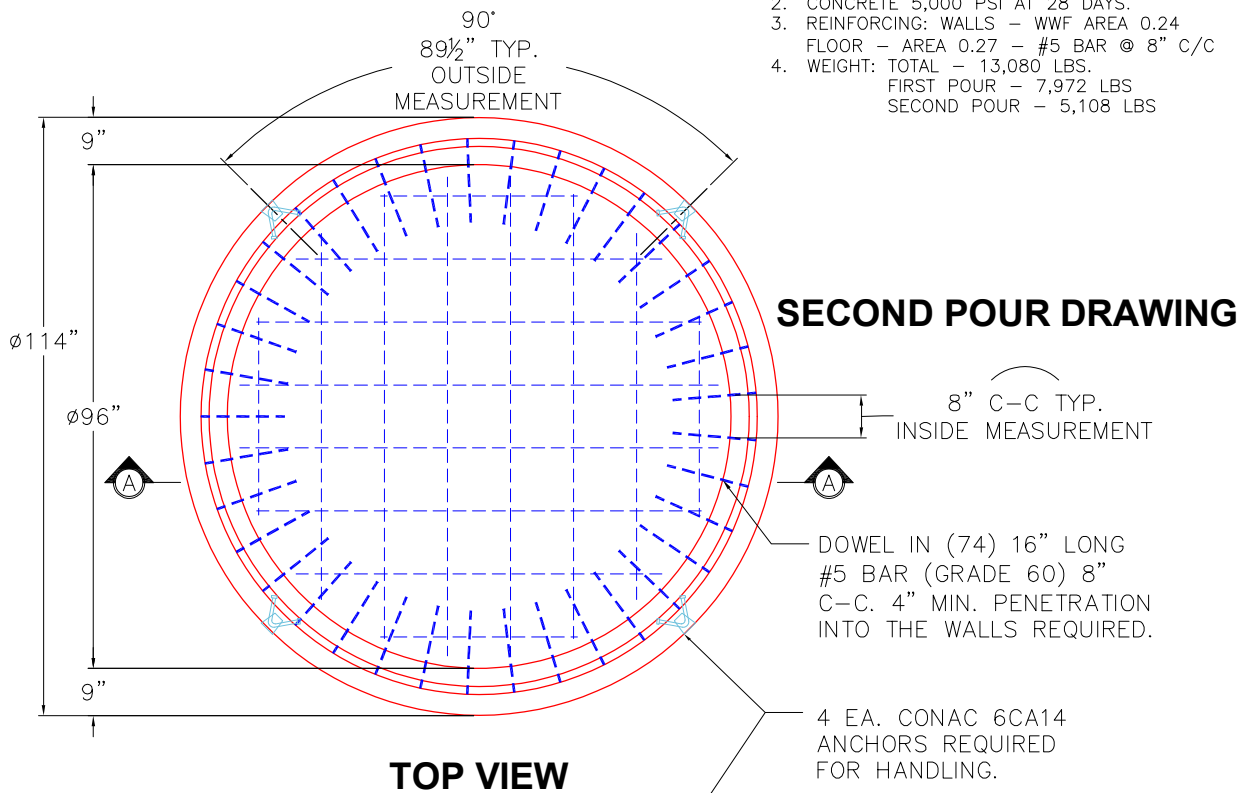
Structure Total: 57876 lb

- Structure Notes:**
1. PER ASTM C478 SPECIFICATIONS.
 2. CONCRETE = 4,000 PSI AT 28 DAYS.
 3. CASTING BY ICAST (HOE MC-375 F/C "STORM").
 4. LIFTING ANCHORS TO BE INSTALLED ON THE OUTSIDE OF THE STRUCTURE.
 5. ASSEMBLY REQUIRED - BRACKETS ONLY.
- REINFORCING PER ASTM A615 (GRADE 60).
 - TOP SLAB (As .62) #5 BARS AT 6" C.C.E.W.
 - RISER/WALLS (As .24)
 - FLOOR (As .47) #5 BARS AT 8" C.C.E.W.

Rim: 696.5' Rim to Invert: 4.65' Slack: 0.8' Sump: 132' Step Position:

GENERAL NOTES:

1. MANUFACTURED TO ASTM C-478 (LATEST REVISION).
2. CONCRETE 5,000 PSI AT 28 DAYS.
3. REINFORCING: WALLS - WWF AREA 0.24
 FLOOR - AREA 0.27 - #5 BAR @ 8" C/C
4. WEIGHT: TOTAL - 13,080 LBS.
 FIRST POUR - 7,972 LBS
 SECOND POUR - 5,108 LBS



SECTION A-A

Coating (Int): Coating (Ext):	Seam Up: Tongue Seam Dn: n/a	Wall Thickness: 9" Floor Height: 8"	Height (Int): 25" Height (Ext): 33"	Weight (Net): 13080 lb Volume (Net): 3.34cu.yd
----------------------------------	---------------------------------	----------------------------------------	----------------------------------------	---------------------------------------------------