

Job Name: 26-1465 - North Middle School Vault  
 Job Location: Radcliff, KY 40160  
 Contractor: Hardin County Water District No. 1

Plant: Beaver Dam, KY  
 4/20/2026 2:53:49 PM

Tech: J. Coppage  
 PC: A. Wells



**Structure ID: 2**

**P1 CVBS**

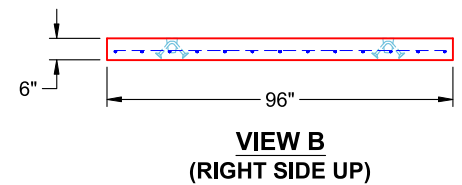
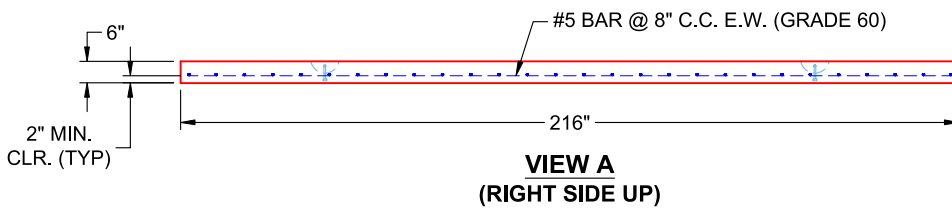
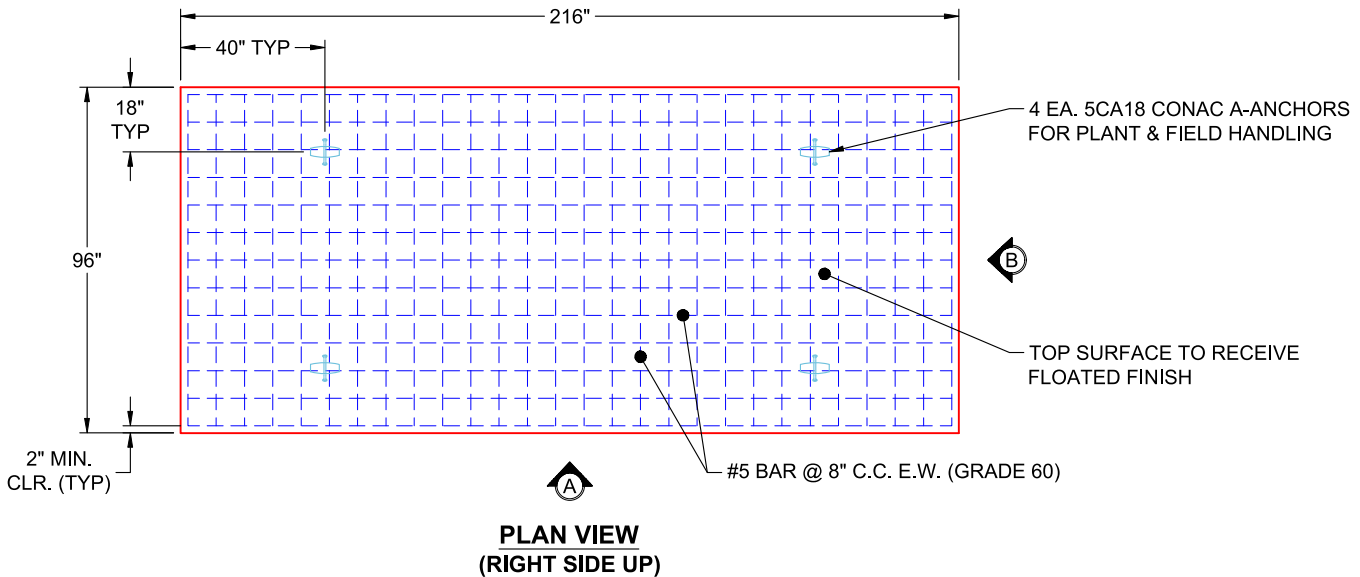
**BX Separate Base Slab (96IN X 216IN OD) F/n**

P4) 30" x 30" - HATCH (CAST FLUSH) - 3"	0 lb
P3) 204" x 84" - BX FLAT LID 6inW w/30"x30" Hatch F/F - 8"	13378 lb
P2) 204" x 84" - BOX RISER 6inW, Variable Ht F/F - 60"	18074 lb
P1) 204" x 84" - BX Separate Base Slab (96IN X 216IN OD) F/n - 6"	10440 lb
1) HATCH (Alum.) - HALLIDAY W1S 30"x30"	62 lb
1) This Structure Includes a Cast-in Item - Halliday W1S 30" x 30" Hatch (Supplied by iCast)	0 lb
2) 204" x 84" - Conseal CS-102 1.00"	0 lb
1) 30" x 30" - Conseal CS-102 1.00"	0 lb
2) Hole - 8	0 lb
Structure Total:	41954 lb

**Structure Notes:**

- PER ASTM C-913 SPECIFICATIONS
- CONCRETE: 4,500 PSI AT 28 DAYS
- REINFORCEMENT: #5 BAR @ 8" C.C. E.W. (GRADE 60) - 2" MIN. REBAR CLEARANCE (TYP)
- LIFTERS: 4 EA. 5CA18 CONAC A-ANCHORS FOR PLANT & FIELD HANDLING - INSTALLED AS SHOWN
- TOP SURFACE TO RECEIVE FLOATED FINISH

Rim: 5.667' Rim to Invert: 4.334' Slack: 0" Sump: 16" Step Position:



Coating (Int):  
 Coating (Ext):

Seam Up: Flat  
 Seam Dn: n/a

Wall Thickness: 6"  
 Floor Height: 6"

Height (Int): 0"  
 Height (Ext): 0"

Weight (Net): 10440 lb  
 Volume (Net): 2.67cu.yd