

Job Name: 26-1453 Clarksville, TN SPC13A
Job Location: Clarksville, TN
Contractor: Cleary Construction, Inc.

PC: C. Goff
 TECH: J. Coppage
 Plant: Beaver Dam



Structure ID: **Wet Well-11-11**

Spec: Sanitary
 Type: Wet Well w/ConBlock-CDA Red
 Size: 120"

Rim: 543.5'
 Invert: 525.77'
 Rim to Invert: 17.73'

Sump: 75.24"
 Floor (Top): 519.5'
 Floor Height: 12"

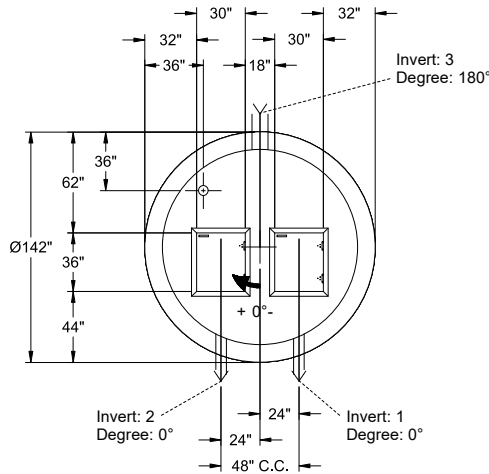
Floor (Bot): 518.5'
 Overall Height: 25.5'
 Slack: -6"

Structure Notes:

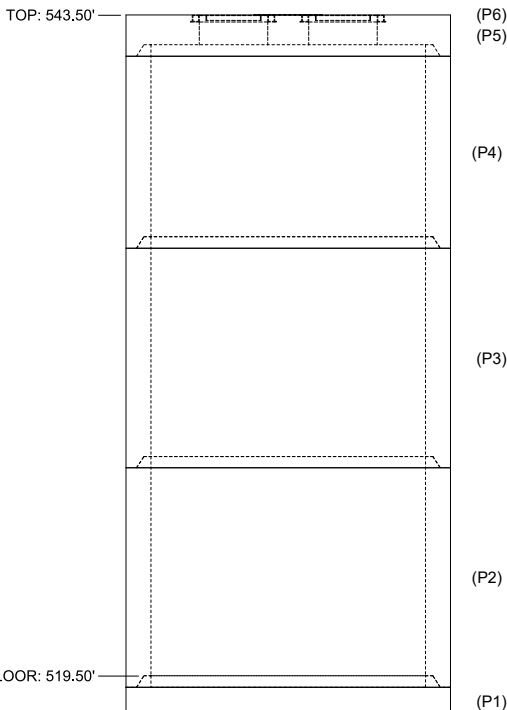
- PER ASTM C-478 SPECIFICATIONS
- CONCRETE: 4,000 PSI AT 28 DAYS
- REINFORCEMENT:
 - FLAT LID TOP MAT: #4 BAR @ 18" C.C. E.W. (GRADE 60)
 - FLAT LID BOTTOM MAT: #5 BAR @ 12" C.C. E.W. (GRADE 60)
 - RISERS: PER ASTM A615
 - BASE SLAB TONGUE: #5 BAR @ 6" C.C. E.W. (GRADE 60)
 - BASE SLAB: DBL MAT #5 BAR @ 6" C.C. E.W. (GRADE 60)
- NO STEPS
- CONBLOCK CDA RED ADMIXTURE REQUIRED
- 2 EA. HALLIDAY WS1 30" X 36" HATCHES SUPPLIED BY iCAST - TO BE CAST INTO FLAT LID
- VENT PIPE SUPPLIED BY OTHERS
- INVERTS 1 & 2 OFFSET 24" FROM CENTER (48" C.C.)

STRUCTURE SUMMARY:

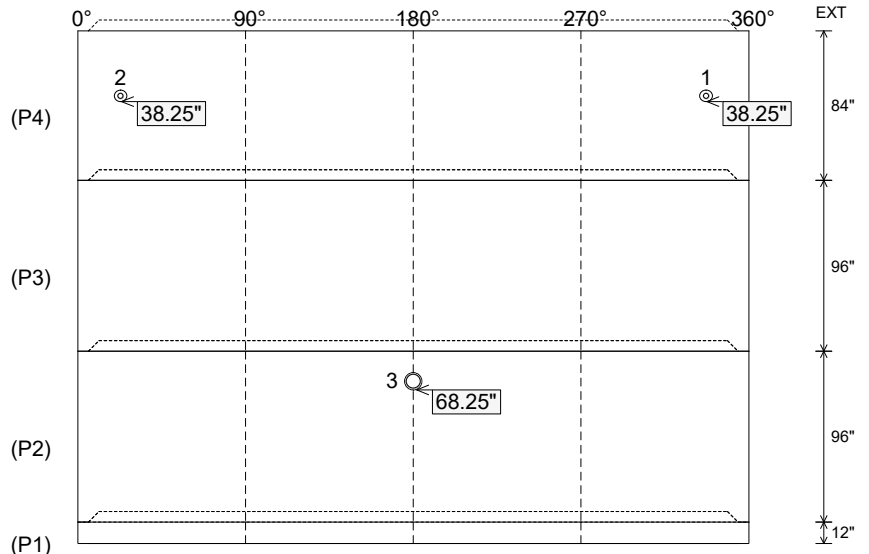
P6) 30" x 36" - HATCH (CAST FLUSH) - 0"	0 lb
P5) 120" - MH FLAT TOP w/2x 30"x36" Hatches CONBLOCK CDA RED F/G - 18"	15235 lb
P4) 120" - MH RISER w/CONBLOCK CDA RED T/G - 84"	31843 lb
P3) 120" - MH RISER w/CONBLOCK CDA RED T/G - 96"	36468 lb
P2) 120" - MH RISER w/CONBLOCK CDA RED T/G - 96"	36399 lb
P1) 120" - MH BASE SLAB w/CONBLOCK CDA RED T/n - 12"	22837 lb
4) JOINT WRAP - 12" WD x 120" MAC WRAP	0 lb
2) HATCH (Alum.) - HALLIDAY W1S 30"x36"	138 lb
1) This Structure Includes a Cast-in Item - Halliday W1S 30" x 36" Hatches (Supplied by iCast)	0 lb
1) ADMIXTURE CONBLOCK CDA RED	0 lb
4) 120" - Conseal CS-231 1.00" (Double)	0 lb
2) Z-Lok - C107-3	2 lb
1) A-Lok - 0285	1 lb
Structure Total:	142923 lb



Position	Elev	Angle	Pipe	Pipe OD	Hole	Connector	Up (L)	Ref
Rim	543.5'							
Reducer								
Invert 1	539.33'	0°	3" DI	3.5"	6.5"	Z-Lok C107-3	38.25"	P4
Invert 2	539.33'	0°	3" DI	3.5"	6.5"	Z-Lok C107-3	38.25"	P4
Invert 3	525.77'	180°	8" PVC SDR21	8.625"	9.75"	A-Lok 0285	68.25"	P2
Invert 4								
Invert 5								
Invert 6								
Invert 7								
Invert 8								



Cast (Int. Dim.) - Interior Dimensions



Submittal Drawing
 4/22/2026 3:12:52 PM

SUBMITTAL
 APPROVED BY: