

Job Name: 26-1453 Clarksville, TN SPC13A
 Job Location: Clarksville, TN
 Contractor: Cleary Construction, Inc.

Plant: Beaver Dam

Tech: J. Coppage

4/23/2026 7:30:29 AM

PC: C. Goff



Structure ID: Wet Well-11-11

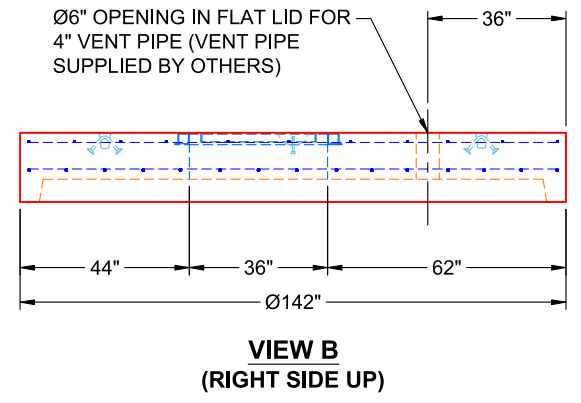
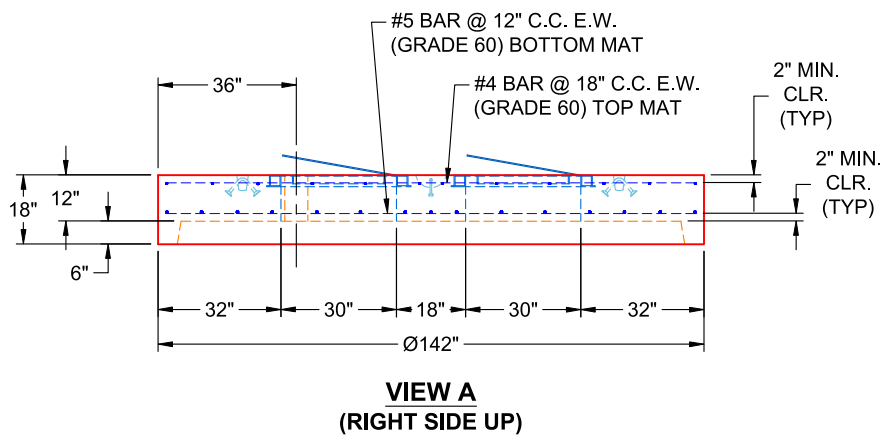
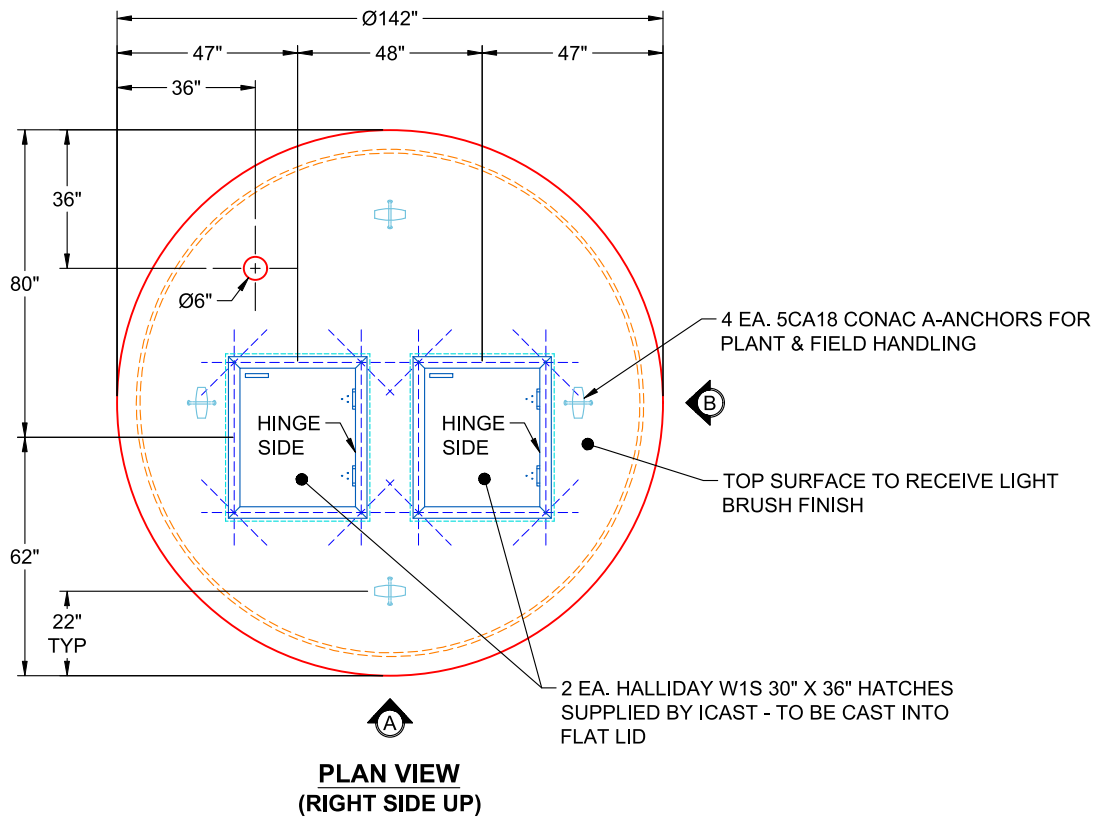
P5 MH120LD18SCDARED

MH FLAT TOP w/2x 30"x36" Hatches CONBLOCK CDA RED F/G

P6) 30" x 36" - HATCH (CAST FLUSH) - 0"	0 lb
P5) 120" - MH FLAT TOP w/2x 30"x36" Hatches CONBLOCK CDA RED F/G - 18"	15235 lb
P4) 120" - MH RISER w/CONBLOCK CDA RED T/G - 84"	31843 lb
P3) 120" - MH RISER w/CONBLOCK CDA RED T/G - 96"	36468 lb
P2) 120" - MH RISER w/CONBLOCK CDA RED T/G - 96"	36399 lb
P1) 120" - MH BASE SLAB w/CONBLOCK CDA RED T/n - 12"	22837 lb
4) JOINT WRAP - 12" WD x 120" MAC WRAP	0 lb
2) HATCH (Alum.) - HALLIDAY W1S 30"x36"	138 lb
1) This Structure Includes a Cast-in Item - Halliday W1S 30" x 36" Hatches (Supplied by iCast)	0 lb
1) ADMIXTURE CONBLOCK CDA RED	0 lb
4) 120" - Conseal CS-231 1.00" (Double)	0 lb
2) Z-Lok - C107-3	2 lb
1) A-Lok - 0285	1 lb
Structure Total:	142923 lb

Structure Notes:

- PER ASTM C-478 SPECIFICATIONS
- CONCRETE: 4,000 PSI AT 28 DAYS
- REINFORCEMENT - 2" MIN. REBAR CLEARANCE (TYP):
 - TOP MAT: #4 BAR @ 18" C.C. E.W. (GRADE 60)
 - BOTTOM MAT: #5 BAR @ 12" C.C. E.W. (GRADE 60)
- CONBLOCK CDA RED ADMIXTURE REQUIRED
- 2 EA. HALLIDAY W1S 30" X 36" HATCHES SUPPLIED BY ICAST - TO BE CAST INTO FLAT LID
- VENT PIPE SUPPLIED BY OTHERS
- LIFTERS: 4 EA. 5CA18 CONAC A-ANCHORS FOR PLANT & FIELD HANDLING - INSTALLED AS SHOWN
- TOP SURFACE TO RECEIVE LIGHT BRUSH FINISH



Coating (Int): Coating (Ext):	Seam Up: Flat Seam Dn: Groove	Wall Thickness: 11"	Height (Ext): 18"	Weight (Net): 15235 lb Volume (Net): 3.89cu.yd
----------------------------------	----------------------------------	---------------------	-------------------	---

Job Number:

26-1453

Job Name:

SPC13A

Structure:

Wet Well-11-11

Note:

2 Each Halliday W1S 30" x 36"
Hatches Supplied By iCast To Be
Cast Into Flat Lid