

Job Name: 26-1453 Clarksville, TN SPC13A
 Job Location: Clarksville, TN
 Contractor: Cleary Construction, Inc.

Plant: Beaver Dam

Tech: J. Coppage

4/23/2026 7:29:29 AM

PC: C. Goff



Structure ID: Wet Well-11-11

P1 MH120BS12CDARED

MH BASE SLAB w/CONBLOCK CDA RED T/n

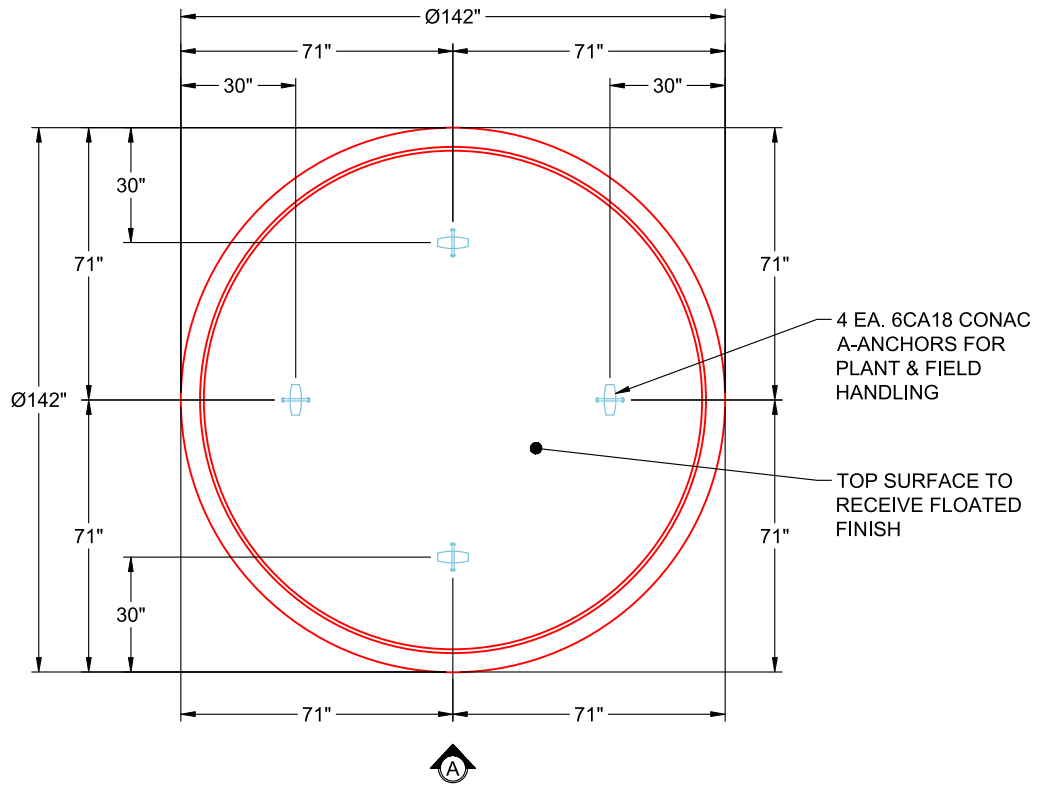
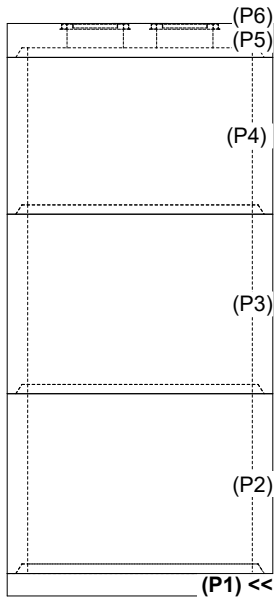
- P6) 30" x 36" - HATCH (CAST FLUSH) - 0"
- P5) 120" - MH FLAT TOP w/2x 30"x36" Hatches CONBLOCK CDA RED F/G - 18"
- P4) 120" - MH RISER w/CONBLOCK CDA RED T/G - 84"
- P3) 120" - MH RISER w/CONBLOCK CDA RED T/G - 96"
- P2) 120" - MH RISER w/CONBLOCK CDA RED T/G - 96"
- P1) 120" - MH BASE SLAB w/CONBLOCK CDA RED T/n - 12"
- 4) JOINT WRAP - 12" WD x 120" MAC WRAP
- 2) HATCH (Alum.) - HALLIDAY W1S 30"x36"
- 1) This Structure Includes a Cast-in Item - Halliday W1S 30" x 36" Hatches (Supplied by iCast)
- 1) ADMIXTURE CONBLOCK CDA RED
- 4) 120" - Conseal CS-231 1.00" (Double)
- 2) Z-Lok - C107-3
- 1) A-Lok - 0285

0 lb
 15235 lb
 31843 lb
 36468 lb
 36399 lb
 22837 lb
 0 lb
 138 lb
 0 lb
 0 lb
 0 lb
 2 lb
 1 lb

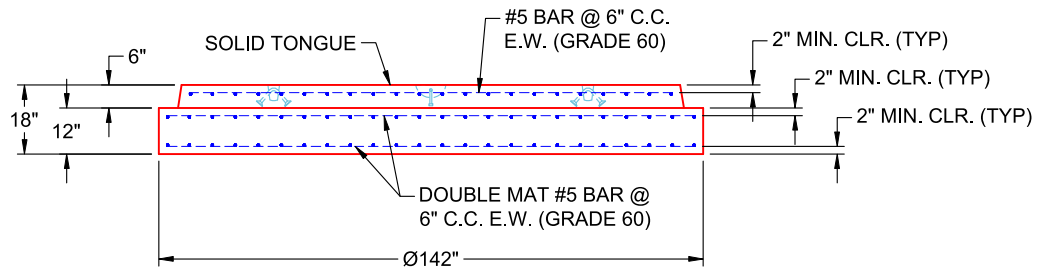
 Structure Total: 142923 lb

- Structure Notes:**
1. PER ASTM C-478 SPECIFICATIONS
 2. CONCRETE: 4,000 PSI AT 28 DAYS
 3. REINFORCEMENT - 2" MIN. REBAR CLEARANCE (TYP):
 - SOLID TONGUE: #5 BAR @ 6" C.C. E.W. (GRADE 60)
 - MAT: DOUBLE MAT #5 BAR @ 6" C.C. E.W. (GRADE 60)
 4. CONBLOCK CDA RED ADMIXTURE REQUIRED
 5. LIFTERS: 4 EA. 6CA18 CONAC A-ANCHORS FOR PLANT & FIELD HANDLING - INSTALLED AS SHOWN
 6. TOP SURFACE TO RECEIVE FLOATED FINISH

Rim: 543.5' Rim to Invert: 17.73' Slack: -6" Sump: 75.24" Step Position:



**PLAN VIEW
(RIGHT SIDE UP)**



**VIEW A
(RIGHT SIDE UP)**

Coating (Int):
 Coating (Ext):

Seam Up: Tongue (Solid)
 Seam Dn: n/a

Wall Thickness: 11"
 Floor Height: 12"

Height (Int): 0"
 Height (Ext): 0"

Weight (Net): 22837 lb
 Volume (Net): 5.83cu.yd