



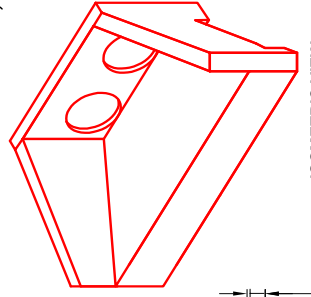
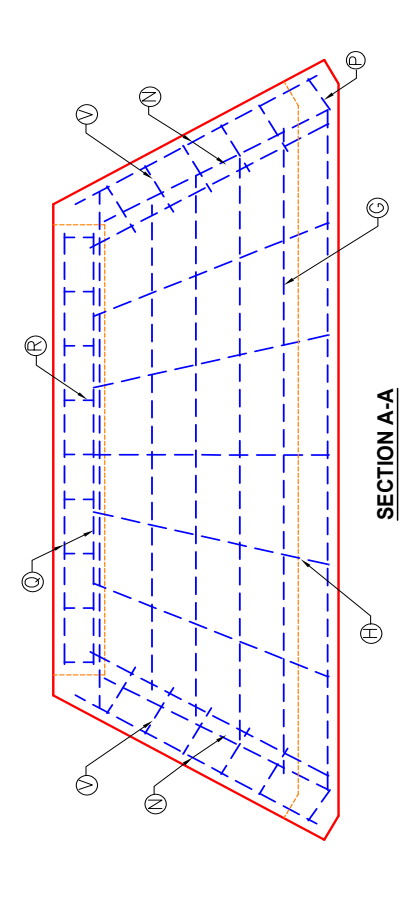
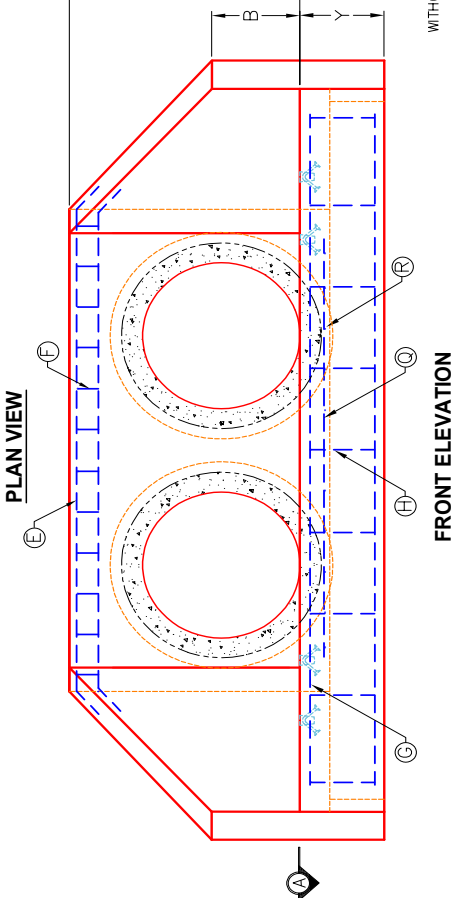
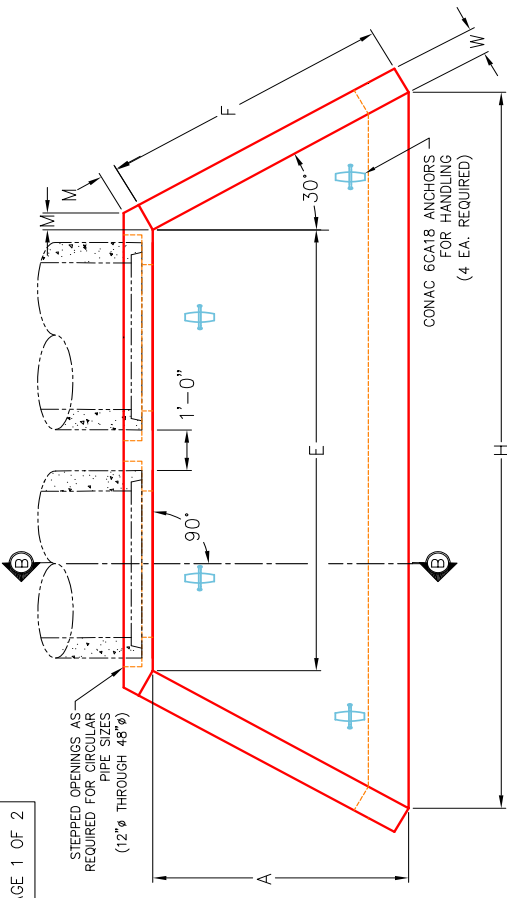
Structure ID: 2 HW

P1 HWDBLCUSTOM

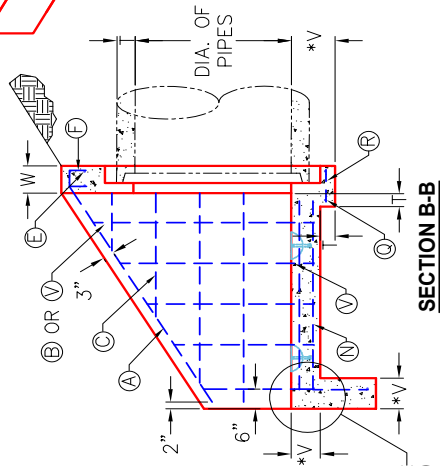
36" - PIPE CULVERT DBL HEADWALL F/F

~NOTES:

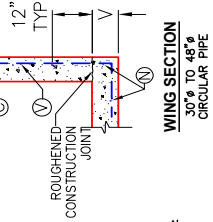
1. SEE CURRENT STANDARD DRAWINGS RDH-510-04, RDH-522 AND RDH-524 FOR DIMENSIONS, QUANTITIES AND BILL OF REINFORCEMENT.
2. DIMENSIONS FROM FACE OF CONCRETE TO STEEL SHALL BE 2" CLEAR DISTANCE.
3. ENCIRCLED LETTERS, O, INDICATE STEEL BAR LOCATIONS.
4. BARS @, C, & V ARE SPACED 12" O.C. ALL OTHER BARS SHALL BE EVENLY SPACED.
5. BARS @ ARE PLACED IN ORDER OF INCREASING LENGTHS, BEGINNING AT THE TOP OF EACH WING.
6. BARS C ARE PLACED IN ORDER OF INCREASING LENGTHS, BEGINNING AT THE TOP OF EACH WING.
7. HEADWALLS LOCATED AT SHOULDER EDGE SHALL BE PARALLEL TO THE CENTERLINE OF ROADWAY.
8. APRON BETWEEN WINGS SHALL BE SLOPED IN DIRECTION OF FLOW EQUAL TO SLOPE OF PIPE. FRONT FACE OF HEADWALL AND ENDS OF WINGS SHALL REMAIN VERTICAL.
9. HEADWALL OPTIONS: ENERGY DISSIPATORS, SEE CHART FOR QUANTITIES PER SIZE.
 *AVAILABLE WITHOUT TOE ("V" DIMENSION = 12" WITHOUT TOE).



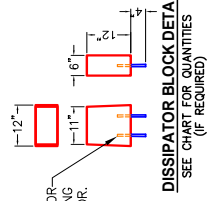
ISOMETRIC VIEW
 DOUBLE 30° HW SHOWN



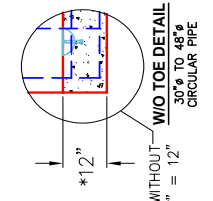
SECTION B-B



WING SECTION
 30% TO 48% CIRCULAR PIPE



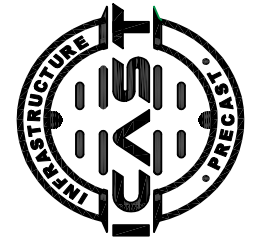
DISSIPATOR BLOCK DETAIL
 SEE CHART FOR QUANTITIES (IF REQUIRED)



W/O TOE DETAIL
 30% TO 48% CIRCULAR PIPE



2-#5 BAR STUBS FOR POST MOUNTING TO HEADWALL FLOOR.



INFRASTRUCTURE PRECAST, INC.	
881 WEST 7TH ST., BEAVER DAM, KY. 42320 PHONE: (270) 363-2238; FAX: (270) 298-7424	
KYTC 12" - 48" DOUBLE PIPE CULVERT HEADWALLS - 0° SKEW (FOR CIRCULAR PIPE)	
DRAWING NO.: ET-KYTC-117	DATE: 06-16-25
REVIEWED BY: J.H. ROSS, PE	DRAWN BY: N. RICHARDS
WEB: WWW.ICASTINC.COM	SCALE: NTS



Structure ID: 2 HW

P1 HWDBLCUSTOM

36" - PIPE CULVERT DBL HEADWALL F/F

DIMENSIONS FOR MULTIPLE PIPE HEADWALLS

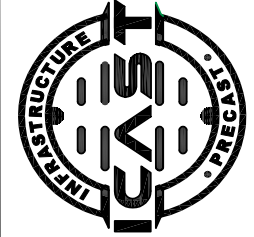
DIMENSIONS	DOUBLE				TRIPLE				DIMENSIONS
	30"	36"	42"	48"	30"	36"	42"	48"	
A	3'-9"	4'-4"	4'-11"	5'-6"	3'-9"	4'-4"	4'-11"	5'-6"	A
B	1'-3"	1'-6"	1'-9"	2'-0"	1'-3"	1'-6"	1'-9"	2'-0"	B
C	3'-6"	4'-0"	4'-7"	5'-1"	3'-6"	4'-0"	4'-7"	5'-1"	C
E	7'-2"	8'-4"	9'-6"	10'-8"	11'-3"	13'-0"	14'-9"	16'-6"	E
F	4'-4"	5'-0"	5'-8"	6'-4"	4'-4"	5'-0"	5'-8"	6'-4"	F
H	11'-6"	13'-4"	15'-2"	17'-0"	15'-6"	18'-0"	20'-6"	22'-10"	H
J	---	---	---	---	7'-9"	9'-0"	10'-3"	11'-5"	J
M	---	---	---	---	0'-5"	0'-5"	0'-5"	0'-5"	M
T	0'-3.5"	0'-4.0"	0'-4.5"	0'-5.0"	0'-3.5"	0'-4.0"	0'-4.5"	0'-5.0"	T
V	---	---	---	---	*0'-8"	*0'-8"	*0'-8"	*0'-8"	V
W	---	---	---	---	0'-8"	0'-8"	0'-8"	0'-8"	W
Y	---	---	---	---	2'-0"	2'-0"	2'-0"	2'-0"	Y
WEIGHT FOR EA. HEADWALL (LBS.)	9,625	12,175	15,150	18,350	12,700	16,050	19,950	24,075	
QUANTITY DIAPHRAGM BLOCKS (EA.)	10	12	14	16	16	18	26	28	

*AVAILABLE WITHOUT TOE ("V" DIMENSION = 12" WITHOUT TOE).

DIMENSIONS FOR MULTIPLE PIPE HEADWALLS

DIMENSIONS	DOUBLE				TRIPLE				DIMENSIONS
	12"	15"	18"	24"	12"	15"	18"	24"	
A	2'-10"	3'-4"	3'-10"	4'-10"	2'-10"	3'-4"	3'-10"	4'-10"	A
B	0'-3"	0'-3"	0'-3"	0'-3"	0'-3"	0'-3"	0'-3"	0'-3"	B
C	1'-9"	2'-0"	2'-3"	2'-9"	1'-9"	2'-0"	2'-3"	2'-9"	C
E	4'-0"	4'-6"	5'-0"	6'-6"	6'-6"	7'-4"	8'-0"	10'-0"	E
F	2'-3"	2'-9"	3'-6"	4'-6"	2'-3"	2'-9"	3'-6"	4'-6"	F
H	5'-6"	6'-0"	7'-0"	9'-0"	8'-0"	9'-0"	10'-0"	12'-8"	H
J	---	---	---	---	4'-0"	4'-6"	5'-0"	6'-4"	J
M	---	---	---	---	0'-5"	0'-5"	0'-5"	0'-5"	M
T	0'-2"	0'-2.25"	0'-2.5"	0'-3.0"	0'-2"	0'-2.25"	0'-2.5"	0'-3.0"	T
V	---	---	---	---	*0'-8"	*0'-8"	*0'-8"	*0'-8"	V
W	---	---	---	---	0'-8"	0'-8"	0'-8"	0'-8"	W
Y	---	---	---	---	1'-6"	1'-6"	1'-6"	1'-6"	Y
WEIGHT FOR EA. HEADWALL (LBS.)	4,100	5,050	6,550	9,550	4,725	7,025	8,350	12,200	
QUANTITY DIAPHRAGM BLOCKS (EA.)	3	3	6	6	8	8	9	9	

*AVAILABLE WITHOUT TOE ("V" DIMENSION = 12" WITHOUT TOE).



INFRASTRUCTURE PRECAST, INC.
 981 WEST 7TH ST., BEAVER DAM, KY. 42320
 PHONE: (270) 963-2238; FAX: (270) 298-7424

KYTC 12" - 24" DOUBLE & TRIPLE PIPE
 CULVERT HEADWALLS - 0° SKEW
 (FOR CIRCULAR PIPE)

DRAWING NO.: ET-KYTC-117 DATE: 06-15-25
 REVIEWED BY: J.H. ROSS, PE DRAWN BY: N. RICHARDS
 WEB: WWW.ICASTINC.COM SCALE: NTS