

Job Name: 26-1439 ADS New Seneca High School
 Job Location: Louisville, KY
 Contractor: ADS Advanced Drainage Systems, Inc.

Plant: Beaver Dam
 3/6/2026 12:31:19 PM

Tech: S. Felletter
 PC: C. Goff



Structure ID: WQU-23 (AR8PC)

P1A MH096BA24

MH BASE T/n

- P6) 24" - CASTING HEIGHT - 7"
- P5) 24" - GRADE RING F/F - 3"
- P4) 96" - MH FLAT TOP w/ 24" Conc. Hole F/G - 17"
- P3) 96" - MH RISER T/G - 84"
- P2) 96" - MH RISER T/G - 72"
- P1) 96" - MH BASE T/n - 24"
- 1) ASSEMBLY REQUIRED - BRACKETS ONLY
- 1) CASTING - HOE MC-375 F/C Storm
- 3) 96" - Conseal CS-102 1.00" (Double)
- 2) Hole - 24

0 lb
 202 lb
 10473 lb
 20164 lb
 17937 lb
 12831 lb
 0 lb
 271 lb
 0 lb
 0 lb

 Structure Total: 61877 lb

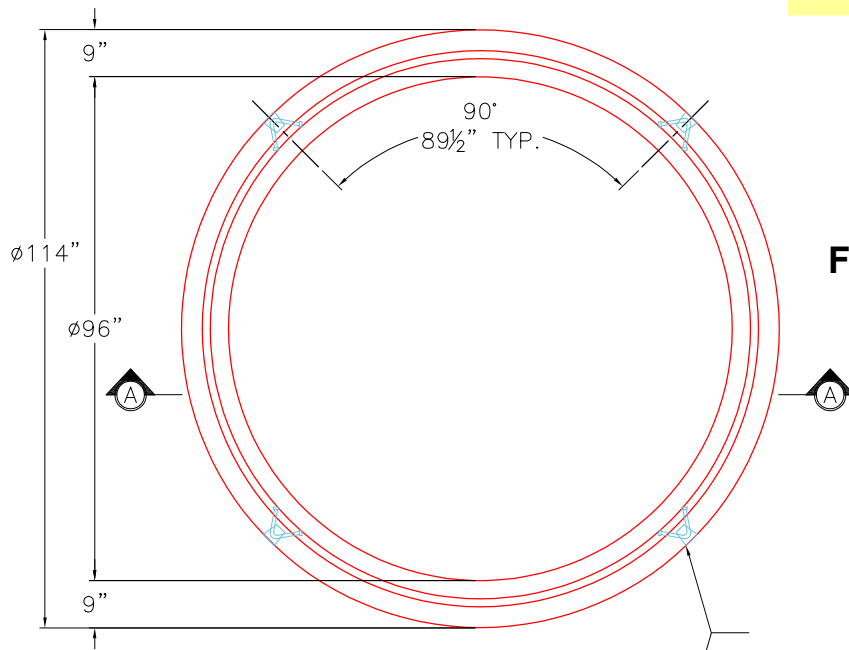
Structure Notes:
 1. PER ASTM C478 SPECIFICATIONS.
 2. CONCRETE = 4,000 PSI AT 28 DAYS.
 3. CASTING BY ICAST (HOE MC-375 "STORM").
 4. ASSEMBLY REQUIRED - BRACKETS ONLY.
 5. LIFTING ANCHORS TO BE INSTALLED ON THE OUTSIDE OF THE STRUCTURE.

REINFORCING PER ASTM A615 (GRADE 60).
 - TOP SLAB (As .62) #5 BARS AT 6" C.C.E.W..
 - RISER/WALLS (As .12)
 - FLOOR (As .31) #5 BARS AT 12" C.C.E.W.

Rim: 484.5' Rim to Invert: 6.3' Slack: 0.6" Sump: 132" Step Position:

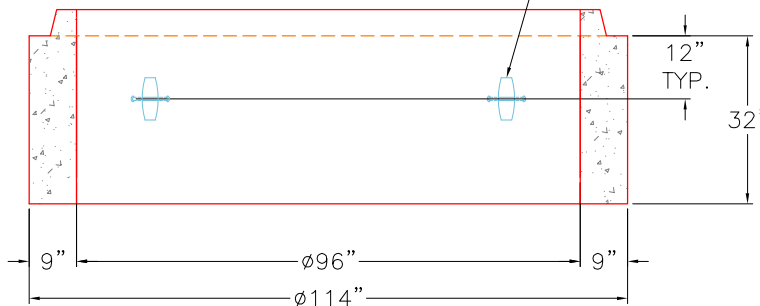
GENERAL NOTES:

1. MANUFACTURED TO ASTM C-478 (LATEST REVISION).
2. CONCRETE 5,000 PSI AT 28 DAYS.
3. REINFORCING: WALLS - WWF AREA 0.24
 FLOOR - AREA 0.27 - #5 BAR @ 12" C/C
4. WEIGHT: TOTAL - 12,831 LBS.
 FIRST POUR - 7,972 LBS
 SECOND POUR - 4,859 LBS



FIRST POUR DRAWING

4 EA. CONAC 6CA14 ANCHORS REQUIRED FOR HANDLING.



SECTION A-A

Coating (Int):
 Coating (Ext):

Seam Up: Tongue
 Seam Dn: n/a

Wall Thickness: 9"
 Floor Height: 8"

Height (Int): 24"
 Height (Ext): 32"

Weight (Net): 12831 lb
 Volume (Net): 3.28cu.yd

Job Name: 26-1439 ADS New Seneca High School
 Job Location: Louisville, KY
 Contractor: ADS Advanced Drainage Systems, Inc.

Plant: Beaver Dam
 3/6/2026 12:31:19 PM

Tech: S. Felletter
 PC: C. Goff



Structure ID: WQU-23 (AR8PC)

P1B MH096BA24

MH BASE T/n

- P6) 24" - CASTING HEIGHT - 7"
- P5) 24" - GRADE RING F/F - 3"
- P4) 96" - MH FLAT TOP w/ 24" Conc. Hole F/G - 17"
- P3) 96" - MH RISER T/G - 84"
- P2) 96" - MH RISER T/G - 72"
- P1) 96" - MH BASE T/n - 24"
- 1) ASSEMBLY REQUIRED - BRACKETS ONLY
- 1) CASTING - HOE MC-375 F/C Storm
- 3) 96" - Conseal CS-102 1.00" (Double)
- 2) Hole - 24"

0 lb
 202 lb
 10473 lb
 20164 lb
 17937 lb
 12831 lb
 0 lb
 271 lb
 0 lb
 0 lb

 Structure Total: 61877 lb

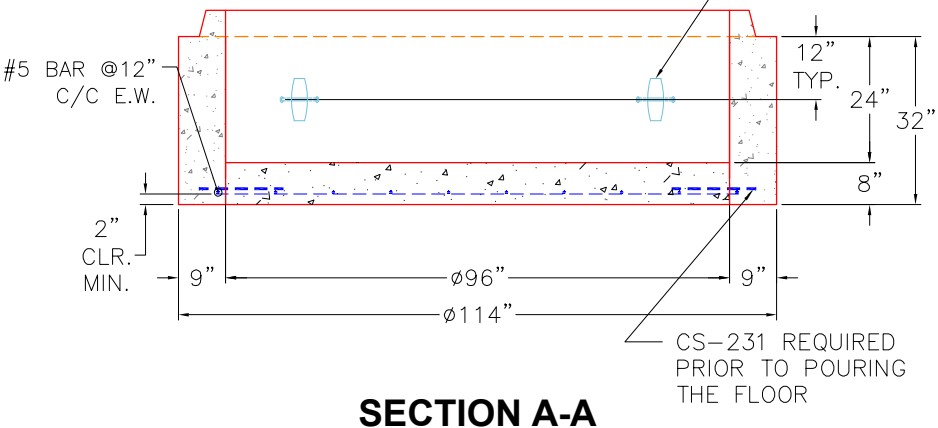
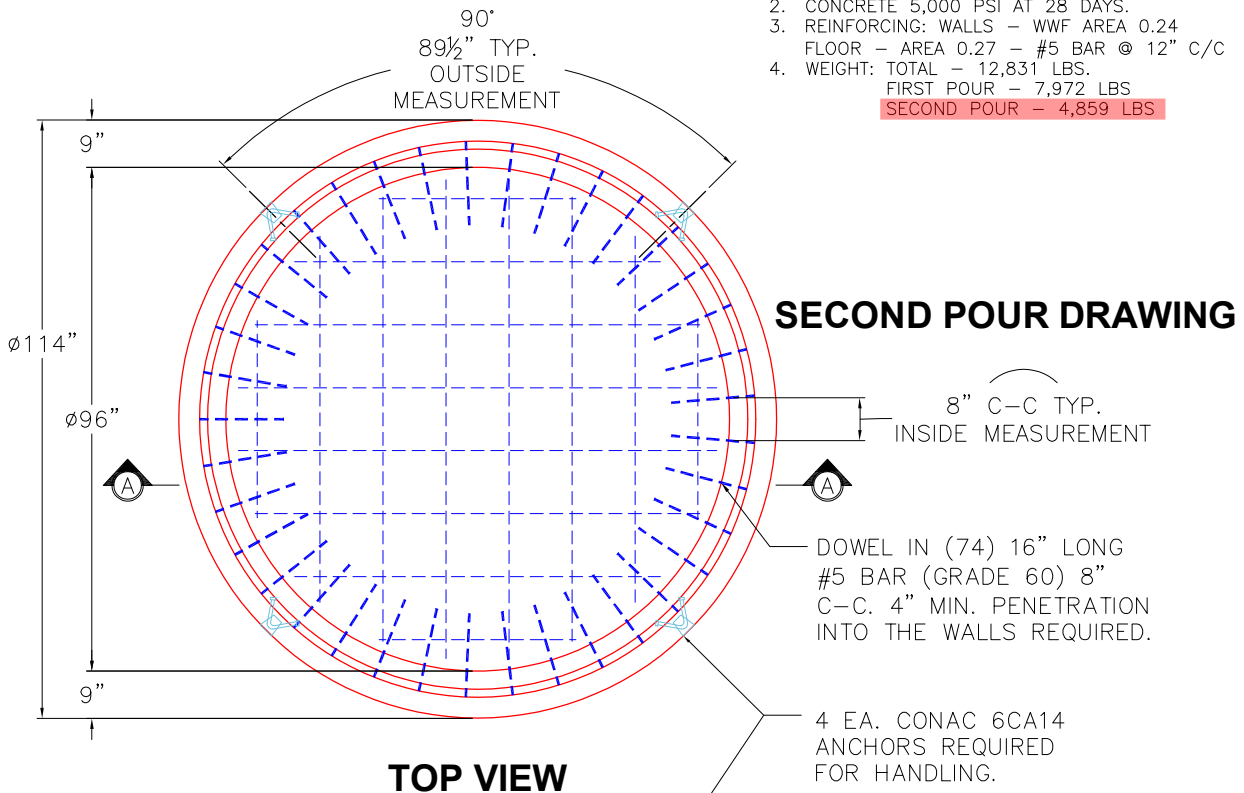
- Structure Notes:**
1. PER ASTM C478 SPECIFICATIONS.
 2. CONCRETE = 4,000 PSI AT 28 DAYS.
 3. CASTING BY ICAST (HOE MC-375 "STORM").
 4. ASSEMBLY REQUIRED - BRACKETS ONLY.
 5. LIFTING ANCHORS TO BE INSTALLED ON THE OUTSIDE OF THE STRUCTURE.

REINFORCING PER ASTM A615 (GRADE 60).
 - TOP SLAB (As .62) #5 BARS AT 6" C.C.E.W..
 - RISER/WALLS (As .12)
 - FLOOR (As .31) #5 BARS AT 12" C.C.E.W.

Rim: 484.5' Rim to Invert: 6.3' Slack: 0.6' Sump: 132' Step Position:

GENERAL NOTES:

1. MANUFACTURED TO ASTM C-478 (LATEST REVISION).
2. CONCRETE 5,000 PSI AT 28 DAYS.
3. REINFORCING: WALLS - WWF AREA 0.24
 FLOOR - AREA 0.27 - #5 BAR @ 12" C/C
4. WEIGHT: TOTAL - 12,831 LBS.
 FIRST POUR - 7,972 LBS
 SECOND POUR - 4,859 LBS



Coating (Int): Coating (Ext):	Seam Up: Tongue Seam Dn: n/a	Wall Thickness: 9" Floor Height: 8"	Height (Int): 24" Height (Ext): 32"	Weight (Net): 12831 lb Volume (Net): 3.28cu.yd
----------------------------------	---------------------------------	--	--	---