



Structure ID: 3

P1 BX012144-08BAVF

BOX BASE 8inW, 8inF, Variable Ht F/n

- P2) 12" x 144" - CASTING (cast in) - 0"
- P1) 12" x 144" - BOX BASE 8inW, 8inF, Variable Ht F/n - 36"
- 1) SECONDARY POUR
- 1) This Structure Includes a Cast-in Item - HOE KY-65A Frames (Supplied by Others)
- 1) 12" x 144" - Conseal CS-102 1.00"
- 1) Hole - 16

0 lb
 11219 lb
 0 lb
 0 lb
 0 lb
 0 lb
 0 lb

 11219 lb

Structure Total:

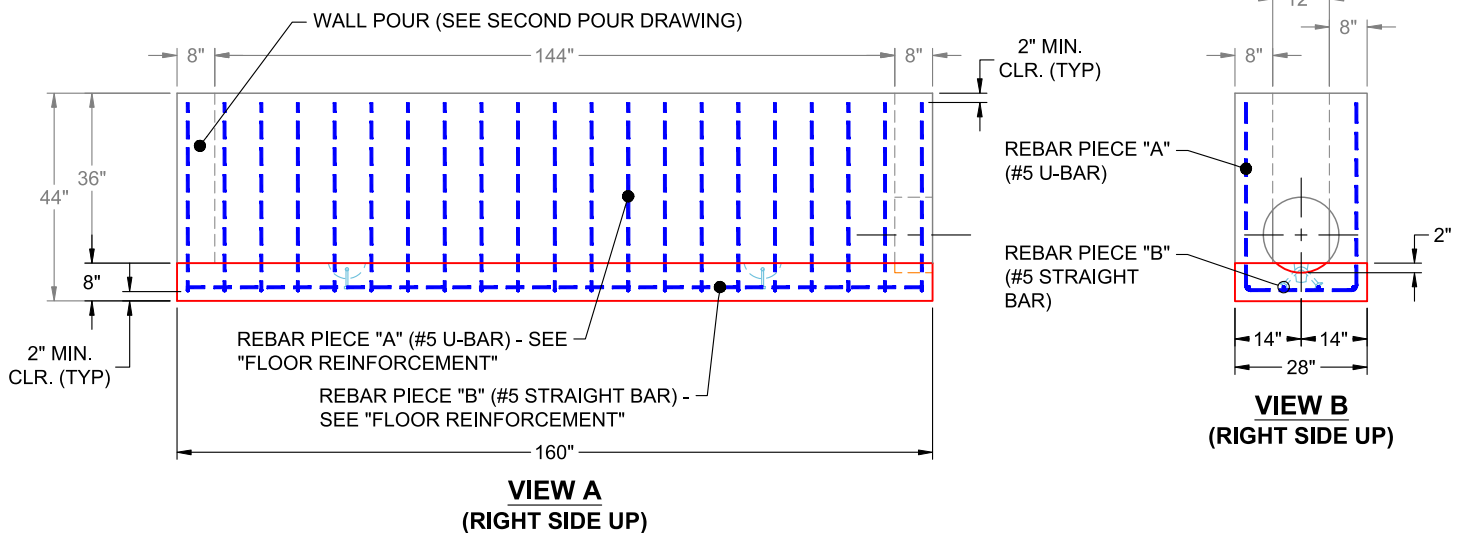
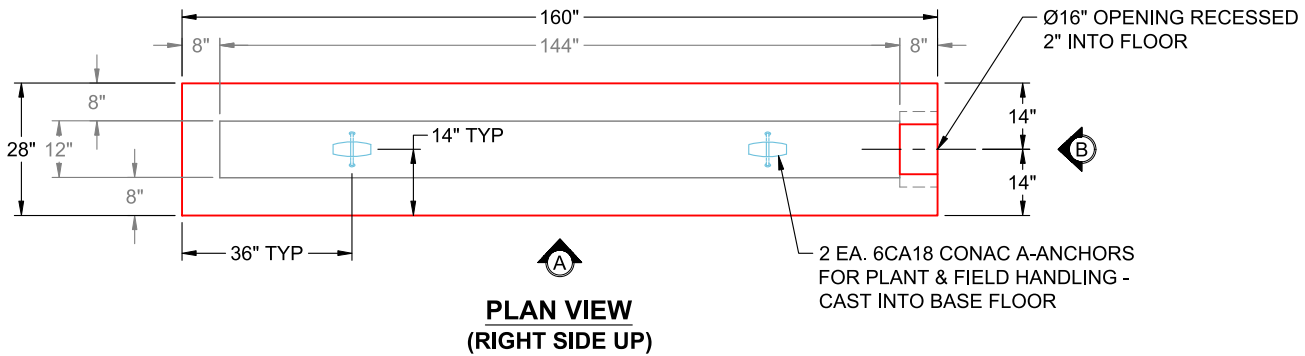
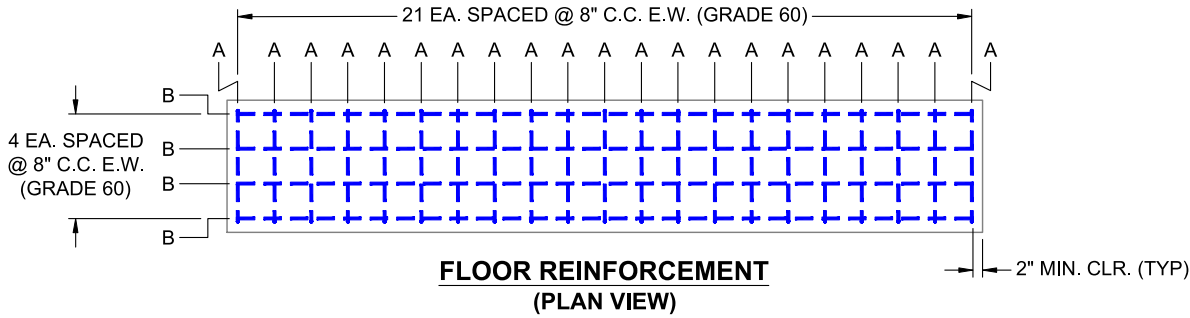
Structure Notes:

- **KYTC STATE PROJECT**
- 1. PER KYTC DBI TYPE 12A / ASTM C-913 SPECS
- 2. CONCRETE: 4,000 PSI AT 28 DAYS
- 3. REINFORCEMENT: #5 BAR @ 8" C.C. E.W. (GRADE 60) AS SHOWN - 2" MIN. REBAR CLEARANCE (TYP)
- 4. NO STORM INVERT
- 5. NO STEPS
- 6. HOE KY-65A FRAMES & GRATES SUPPLIED BY OTHERS - FRAMES TO BE CAST INTO TOP OF WALLS

FIRST POUR (FLOOR): 3,007 LBS

SECOND POUR (WALLS): 8,212 LBS

PG. 1 OF 3





Structure ID: 3

P1 BX012144-08BAVF

BOX BASE 8inW, 8inF, Variable Ht F/n

- P2) 12" x 144" - CASTING (cast in) - 0"
- P1) 12" x 144" - BOX BASE 8inW, 8inF, Variable Ht F/n - 36"
- 1) SECONDARY POUR
- 1) This Structure Includes a Cast-in Item - HOE KY-65A Frames (Supplied by Others)
- 1) 12" x 144" - Conseal CS-102 1.00"
- 1) Hole - 16

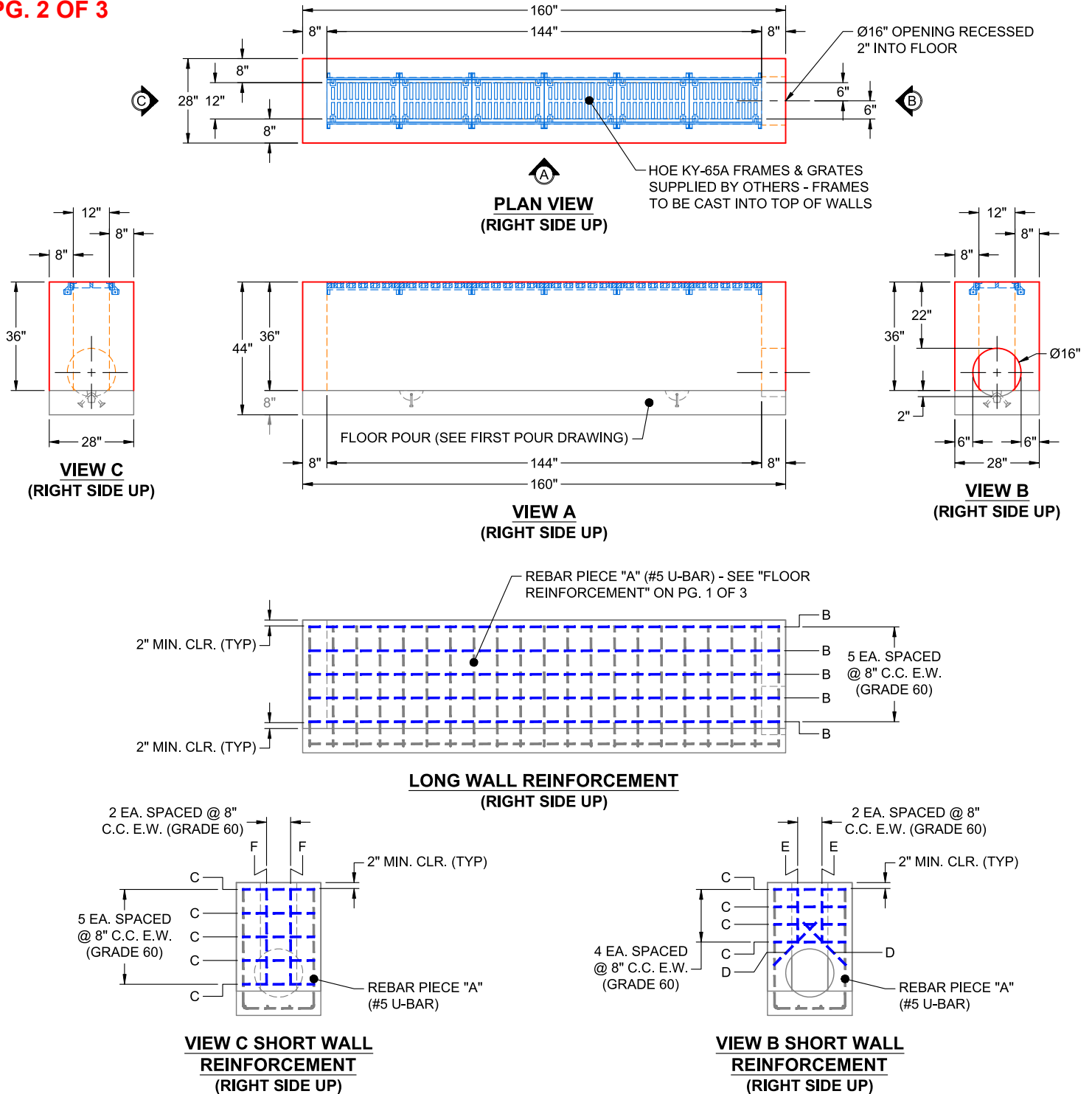
- Structure Notes:**
 KYTC STATE PROJECT
1. PER KYTC DBI TYPE 12A / ASTM C-913 SPECS
 2. CONCRETE: 4,000 PSI AT 28 DAYS
 3. REINFORCEMENT: #5 BAR @ 8" C.C. E.W. (GRADE 60) AS SHOWN - 2" MIN. REBAR CLEARANCE (TYP)
 4. NO STORM INVERT
 5. NO STEPS
 6. HOE KY-65A FRAMES & GRATES SUPPLIED BY OTHERS - FRAMES TO BE CAST INTO TOP OF WALLS

Structure Total: 11219 lb

FIRST POUR (FLOOR): 3,007 LBS

SECOND POUR (WALLS): 8,212 LBS

PG. 2 OF 3



Job Name: 26-1433 - Middletown-Eastwood Trail Sec 2 DBI
 Job Location: Louisville, KY
 Contractor: Louisville Paving and Construction

Plant: 100

4/15/2026 8:26:34 AM

Tech: Jared - A

PC: J. Jarvis



Structure ID: 3

P1 BX012144-08BAVF

BOX BASE 8inW, 8inF, Variable Ht F/n

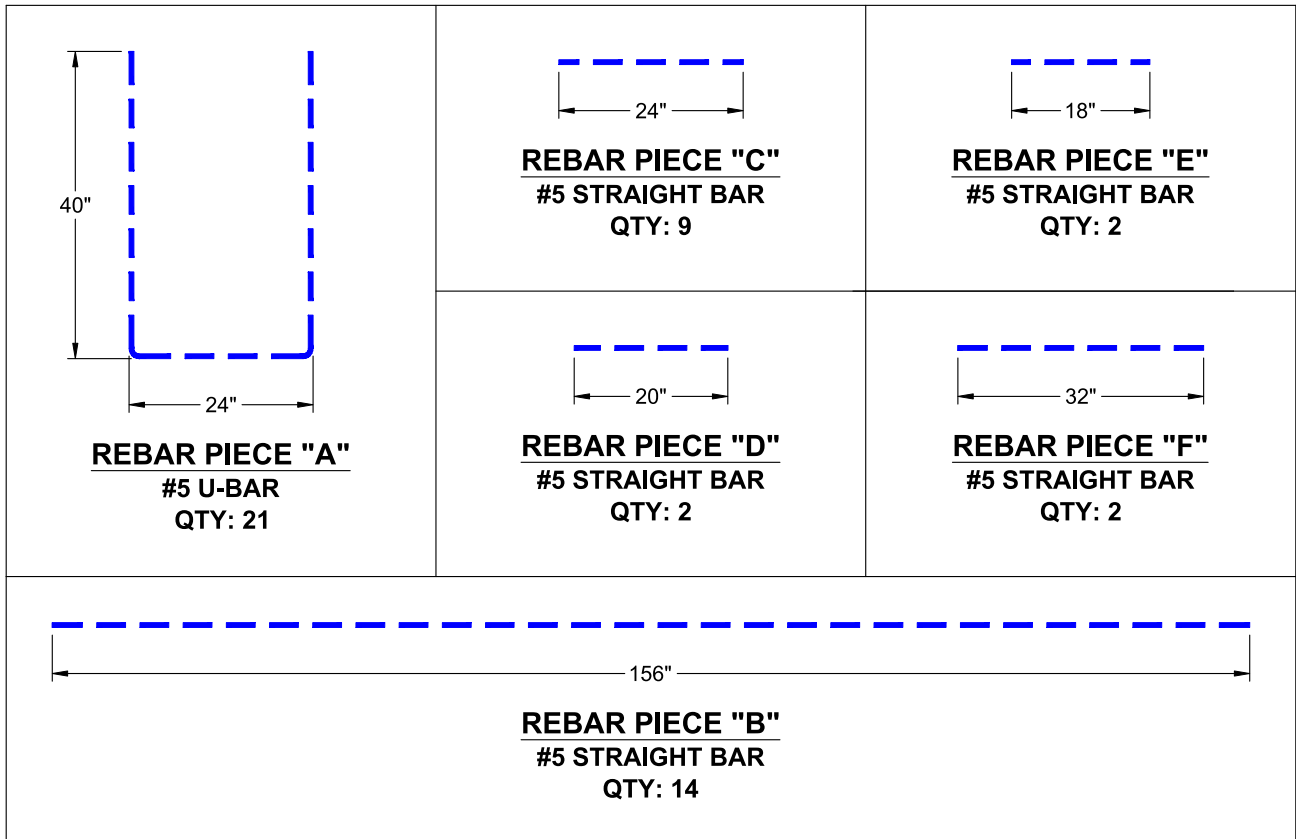
- P2) 12" x 144" - CASTING (cast in) - 0"
- P1) 12" x 144" - BOX BASE 8inW, 8inF, Variable Ht F/n - 36"
- 1) SECONDARY POUR
- 1) This Structure Includes a Cast-in Item - HOE KY-65A Frames (Supplied by Others)
- 1) 12" x 144" - Conseal CS-102 1.00"
- 1) Hole - 16

0 lb
 11219 lb
 0 lb
 0 lb
 0 lb
 0 lb

 0 lb
 Structure Total: 11219 lb

- Structure Notes:
 KYTC STATE PROJECT
1. PER KYTC DBI TYPE 12A / ASTM C-913 SPECS
 2. CONCRETE: 4,000 PSI AT 28 DAYS
 3. REINFORCEMENT: #5 BAR @ 8" C.C. E.W. (GRADE 60) AS SHOWN - 2" MIN. REBAR CLEARANCE (TYP)
 4. NO STORM INVERT
 5. NO STEPS
 6. HOE KY-65A FRAMES & GRATES SUPPLIED BY OTHERS - FRAMES TO BE CAST INTO TOP OF WALLS

PG. 3 OF 3



Job Number:

26-1433

Job Name:

Middletown-Eastwood Trail Sec 2

DBI

Structure:

3

Note:

HOE KY-65A Frames Supplied By
Others To Be Cast Into Top Of Walls