

Job Name: 26-1427 876621 QT 603 St Charles
 Job Location: Saint Charles, MO
 Contractor: Contech Engineering Solutions

Plant: Beaver Dam
 3/3/2026 4:24:28 PM

Tech: S. Felletter
 PC: T. Sekula



Structure ID: 10-CS-5

P3 MH060LD13-30ECC

MH FLAT TOP SPEC. (30" ECC HOLE) F/G

- P4) 30" - CASTING HEIGHT - 4"
- P3) 60" - MH FLAT TOP SPEC. (30" ECC HOLE) F/G - 13"
- P2) 60" - MH RISER T/G - 60"
- P1) 60" - MH BASE T/h - 36"
- 1) CVSTENCILING
- 1) ASSEMBLY REQUIRED
- 2) 60" - Conseal CS-102 1.00"
- 3) PSX - 20Y DD

0 lb
 2589 lb
 5781 lb
 6491 lb
 0 lb
 0 lb
 0 lb
 24 lb

 Structure Total: 14886 lb

Structure Notes:
 4" CASTING BY OTHERS

 LIFTING ANCHORS TO BE INSTALLED ON THE OUTSIDE OF THE STRUCTURE

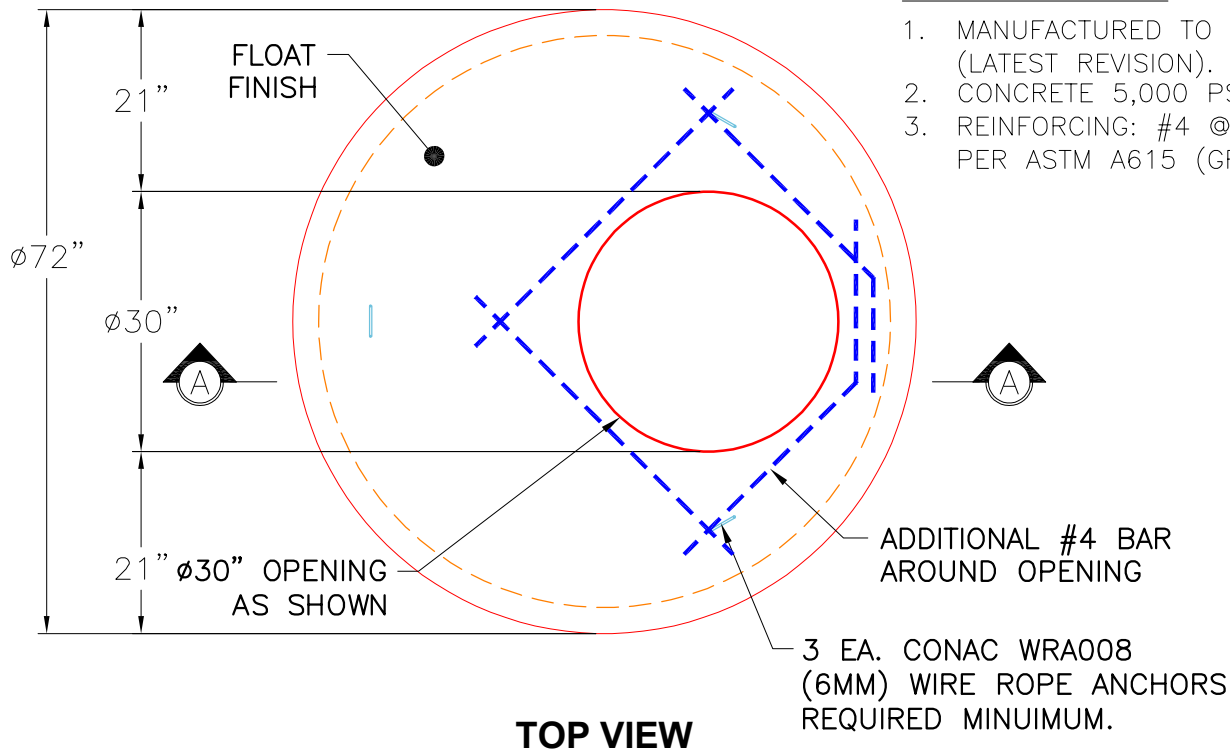
 ICAST TO INSTALL THE INTERNALS

 CONTECH'S LOGO AS WELL AS THE INLET AND OUTLET MUST BE STENCILED ONTO THE STRUCTURE

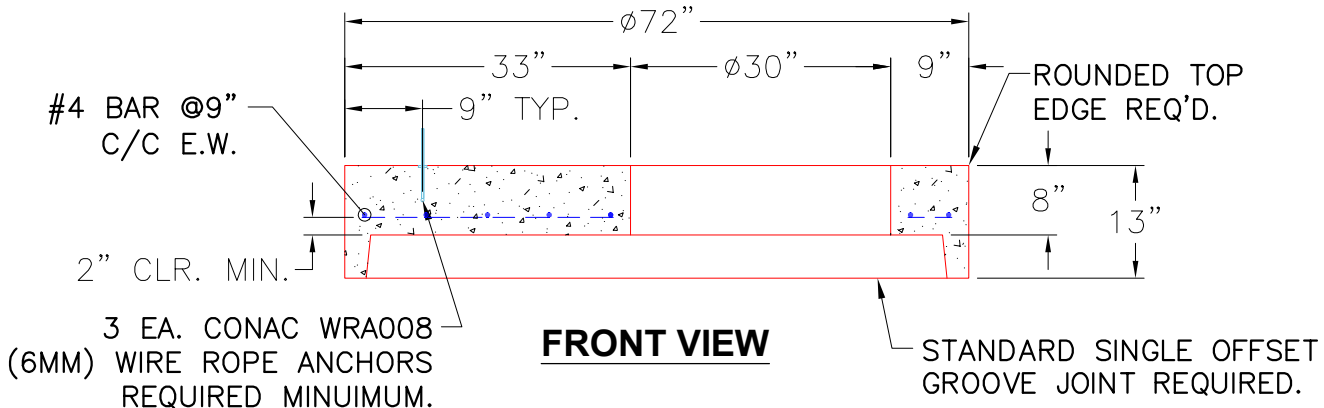
 P1 BASE & P2 RISER TO BE MECHANICALLY ATTACHED BEFORE INTERNAL INSTALLATION/DELIVERY.

GENERAL NOTES:

1. MANUFACTURED TO ASTM C-478 (LATEST REVISION).
2. CONCRETE 5,000 PSI AT 28 DAYS.
3. REINFORCING: #4 @ 9" O.C. E.W. PER ASTM A615 (GRADE 60)



TOP VIEW



FRONT VIEW

| | | | | |
|----------------------------------|----------------------------------|--------------------|-------------------|--|
| Coating (Int): Coating (Ext): | Seam Up: Flat Seam Dn: Groove | Wall Thickness: 6" | Height (Ext): 13" | Weight (Net): 2589 lb Volume (Net): 0.66cu.yd |
|----------------------------------|----------------------------------|--------------------|-------------------|--|