



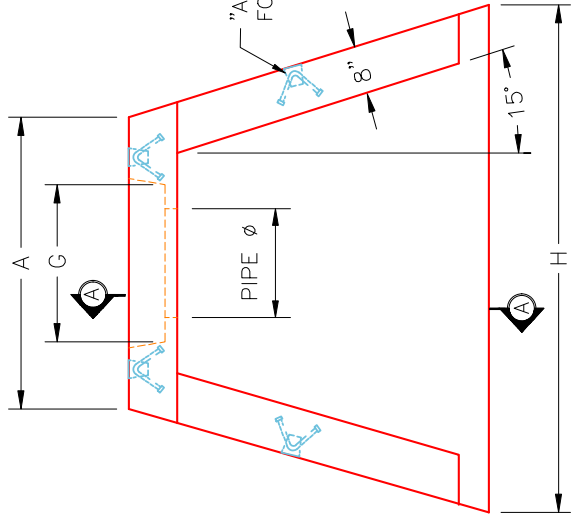
Structure ID: FES-516-10 HW

P1 HWSF12F

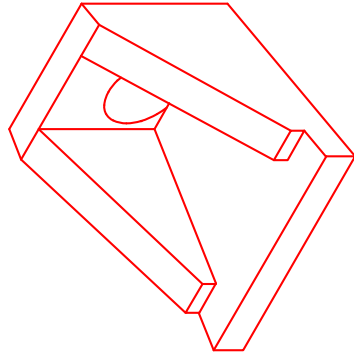
12" - HW SLOPED & FLARED w/FLAT BOTTOM F/F

DIMENSIONS								WEIGHT	
PIPE ϕ	A	B	C	D	E	F	G	H	
12"	2'-9"	2'-8"	2'-0"	8"	4'-0"	3"	1'-6"	4'-9"	2,255 LBS.

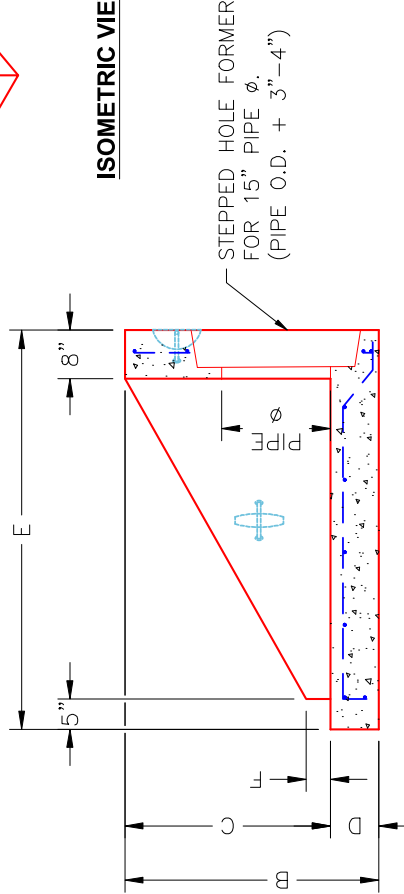
"A-ANCHOR" LIFTING SYSTEM FOR PLANT & FIELD HANDLING.



PLAN VIEW



ISOMETRIC VIEW



SECTION A-A

FRONT ELEVATION

NOTES:

1. CONCRETE: KYTC APPROVED.
2. REINFORCING: #4 BAR @ 12" C/C E.W. - GRADE 60, (WITH 2" CONCRETE COVER MINIMUM)
3. REINFORCING BARS TO BE TACK WELDED OR TIED.
4. PIPE AND LIFTING ANCHOR POCKETS TO BE GROUTED WITH KYTC APPROVED NON-SHRINK GROUT.
5. DRAWING TO BE USED IN CONJUNCTION WITH KYTC STD. DRAWING RDH-020-03 AND THE STANDARD SPECIFICATIONS FOR ROAD AND BRIDGE CONSTRUCTION.
6. $\frac{3}{8}$ " CHAMFER ON ALL EXPOSED EDGES.
7. PREFORMED STEPPED HOLE SIZED AS PER O.D. OF PIPE + 3" - 4".

INFRASTRUCTURE PRECAST, INC. 981 WEST 7TH ST., BEAVER DAM, KY, 42320 PHONE: (270) 363-2238, FAX: (270) 298-7424	
KYTC 12" SLOPED & FLARED HEADWALL W/ FLAT BOTTOM	DATE: 9-23-25 DRAWN BY: J. COPPAGE SCALE: NTS
DRAWING NO.: HWSF12F REVIEWED BY: J.H. ROSS, PE	WEB: WWW.ICASTINC.COM