

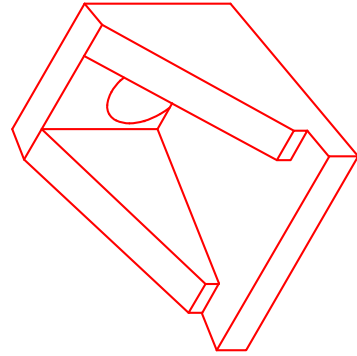


Structure ID: FES-514-9 HW

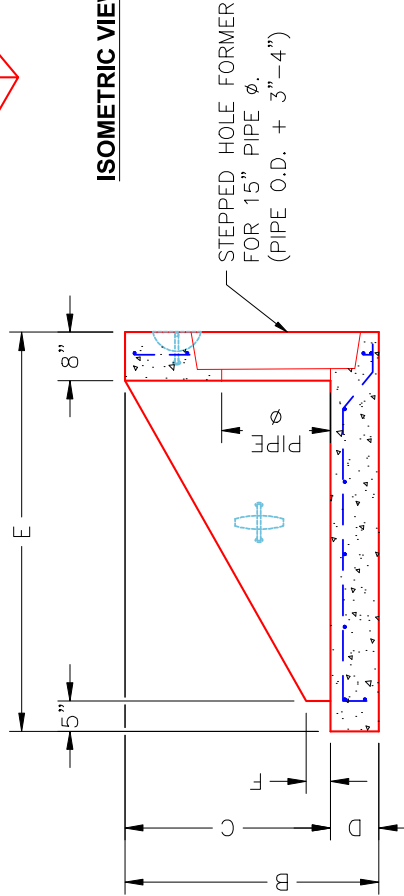
P1 HWSF12F

12" - HW SLOPED & FLARED w/FLAT BOTTOM F/F


DIMENSIONS										WEIGHT 2,255 LBS.
PIPE ϕ	A	B	C	D	E	F	G	H		
12"	2'-9"	2'-8"	2'-0"	8"	4'-0"	3"	1'-6"	4'-9"		



ISOMETRIC VIEW



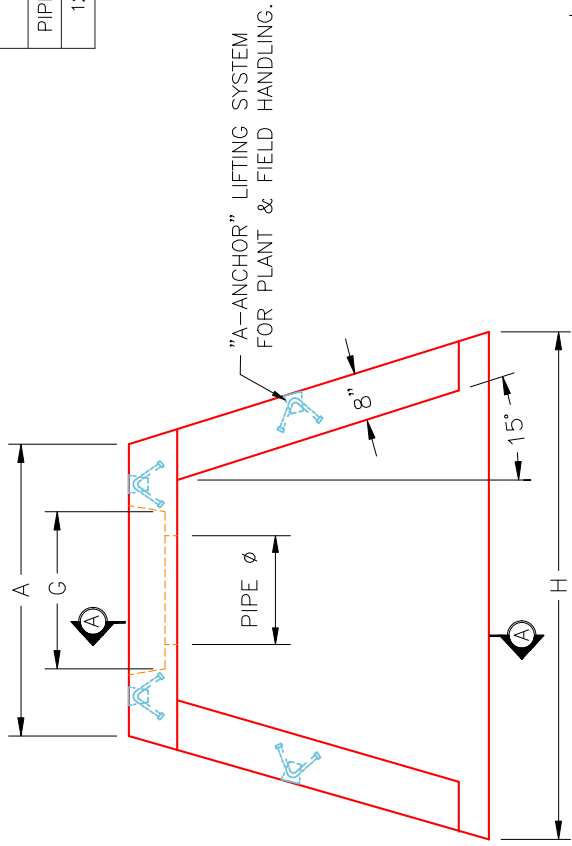
SECTION A-A



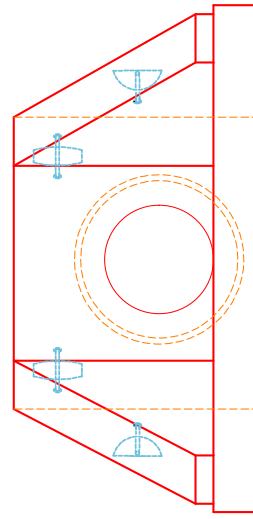
INFRASTRUCTURE PRECAST, INC.
 981 WEST 7TH ST., BEAVER DAM, KY, 42320
 PHONE: (270) 363-2238, FAX: (270) 298-7424

KYTC 12" SLOPED & FLARED HEADWALL
 W/ FLAT BOTTOM

DRAWING NO.: HWSF12F DATE: 9-23-25
 REVIEWED BY: J.H. ROSS, PE DRAWN BY: J. COPPAGE
 WEB: WWW.ICASTINC.COM SCALE: NTS



PLAN VIEW



FRONT ELEVATION

NOTES:

1. CONCRETE: KYTC APPROVED.
2. REINFORCING: #4 BAR @ 12" C/C E.W. - GRADE 60, (WITH 2" CONCRETE COVER MINIMUM)
3. REINFORCING BARS TO BE TACK WELDED OR TIED.
4. PIPE AND LIFTING ANCHOR POCKETS TO BE GROUTED WITH KYTC APPROVED NON-SHRINK GROUT.
5. DRAWING TO BE USED IN CONJUNCTION WITH KYTC STD. DRAWING RDH-020-03 AND THE STANDARD SPECIFICATIONS FOR ROAD AND BRIDGE CONSTRUCTION.
6. 3/8" CHAMFER ON ALL EXPOSED EDGES.
7. PREFORMED STEPPED HOLE SIZED AS PER O.D. OF PIPE + 3" - 4".