

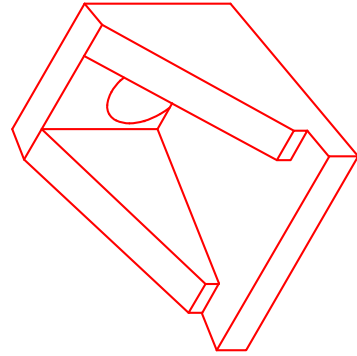


**Structure ID: FES-510-7 HW**

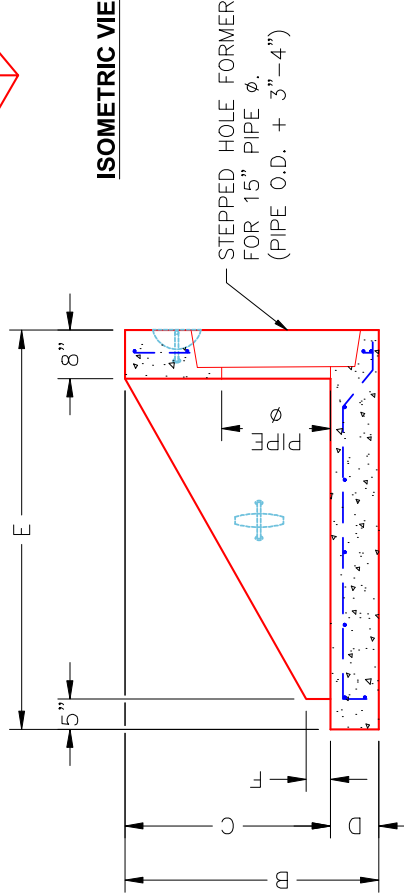
**P1 HWSF12F**

**12" - HW SLOPED & FLARED w/FLAT BOTTOM F/F**


| DIMENSIONS  |       |       |       |    |       |    |       |       |  | WEIGHT<br>2,255 LBS. |
|-------------|-------|-------|-------|----|-------|----|-------|-------|--|----------------------|
| PIPE $\phi$ | A     | B     | C     | D  | E     | F  | G     | H     |  |                      |
| 12"         | 2'-9" | 2'-8" | 2'-0" | 8" | 4'-0" | 3" | 1'-6" | 4'-9" |  |                      |



**ISOMETRIC VIEW**



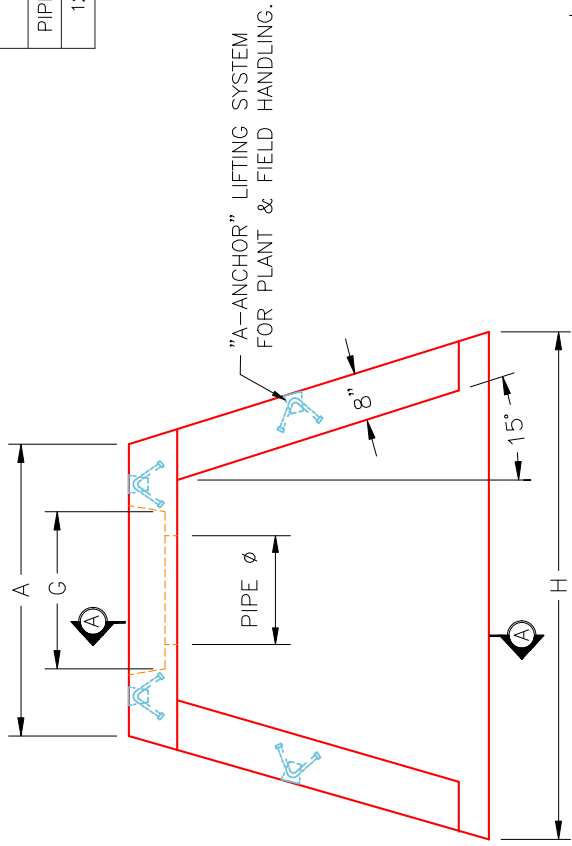
**SECTION A-A**



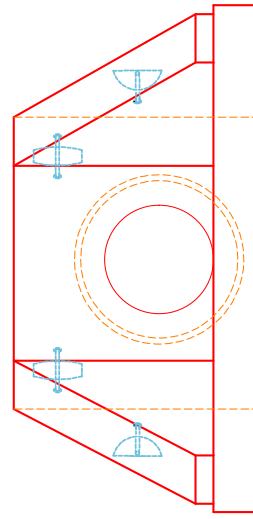
**INFRASTRUCTURE PRECAST, INC.**  
 981 WEST 7TH ST., BEAVER DAM, KY, 42320  
 PHONE: (270) 363-2238, FAX: (270) 298-7424

KYTC 12" SLOPED & FLARED HEADWALL  
 W/ FLAT BOTTOM

DRAWING NO.: HWSF12F    DATE: 9-23-25  
 REVIEWED BY: J.H. ROSS, PE    DRAWN BY: J. COPPAGE  
 WEB: WWW.ICASTINC.COM    SCALE: NTS



**PLAN VIEW**



**FRONT ELEVATION**

**NOTES:**

1. CONCRETE: KYTC APPROVED.
2. REINFORCING: #4 BAR @ 12" C/C E.W. - GRADE 60, (WITH 2" CONCRETE COVER MINIMUM)
3. REINFORCING BARS TO BE TACK WELDED OR TIED.
4. PIPE AND LIFTING ANCHOR POCKETS TO BE GROUTED WITH KYTC APPROVED NON-SHRINK GROUT.
5. DRAWING TO BE USED IN CONJUNCTION WITH KYTC STD. DRAWING RDH-020-03 AND THE STANDARD SPECIFICATIONS FOR ROAD AND BRIDGE CONSTRUCTION.
6.  $\frac{3}{8}$ " CHAMFER ON ALL EXPOSED EDGES.
7. PREFORMED STEPPED HOLE SIZED AS PER O.D. OF PIPE + 3" - 4".