

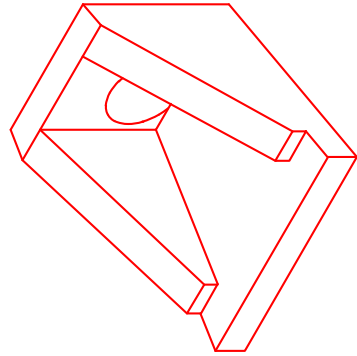


Structure ID: FES-508-6 HW

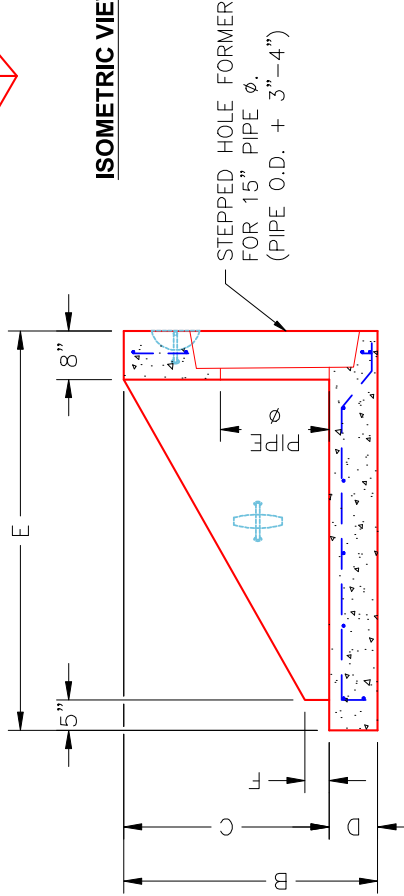
P1 HWSF18F

18" - HW SLOPED & FLARED w/FLAT BOTTOM F/F

| DIMENSIONS | | | | | | | | | |
|-------------|-------|-------|--------|----|-------|----|-------|-------|------------|
| PIPE ϕ | A | B | C | D | E | F | G | H | WEIGHT |
| 18" | 3'-6" | 4'-4" | 2'-10" | 8" | 5'-0" | 4" | 2'-2" | 6'-0" | 3,711 LBS. |

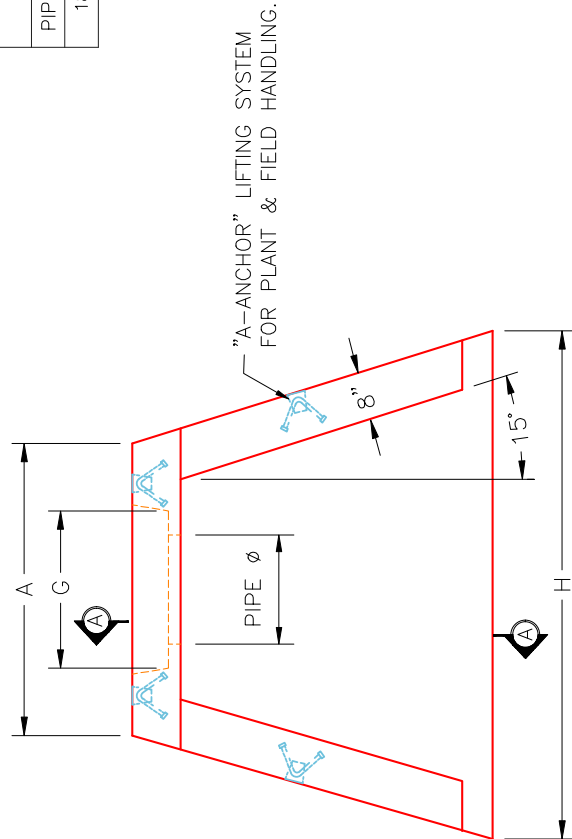


ISOMETRIC VIEW

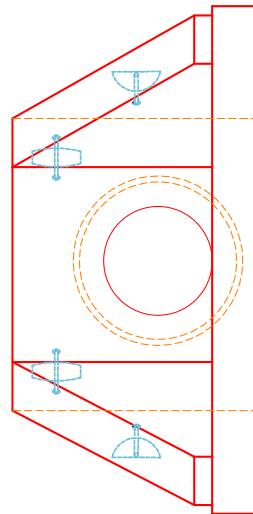


SECTION A-A

| | |
|--|---|
| | |
| INFRASTRUCTURE PRECAST, INC. 981 WEST 7TH ST., BEAVER DAM, KY. 42320 PHONE: (270) 363-2238, FAX: (270) 298-7424 | |
| KYTC 18" SLOPED & FLARED HEADWALL W/ FLAT BOTTOM | DATE: 9-23-25 DRAWN BY: J. COPPAGE SCALE: NTS |
| DRAWING NO.: HWSF18F | REVIEWED BY: J.H. ROSS, PE |
| WWW.ICASTINC.COM | SCALE: NTS |



PLAN VIEW



FRONT ELEVATION

NOTES:

1. CONCRETE: KYTC APPROVED.
2. REINFORCING: #4 BAR @ 12" C/C E.W. - GRADE 60, (WITH 2" CONCRETE COVER MINIMUM)
3. REINFORCING BARS TO BE TACK WELDED OR TIED.
4. PIPE AND LIFTING ANCHOR POCKETS TO BE GROUTED WITH KYTC APPROVED NON-SHRINK GROUT.
5. DRAWING TO BE USED IN CONJUNCTION WITH KYTC STD. DRAWING RDH-020-03 AND THE STANDARD SPECIFICATIONS FOR ROAD AND BRIDGE CONSTRUCTION.
6. $\frac{3}{8}$ " CHAMFER ON ALL EXPOSED EDGES.
7. PREFORMED STEPPED HOLE SIZED AS PER O.D. OF PIPE + 3"-4".