



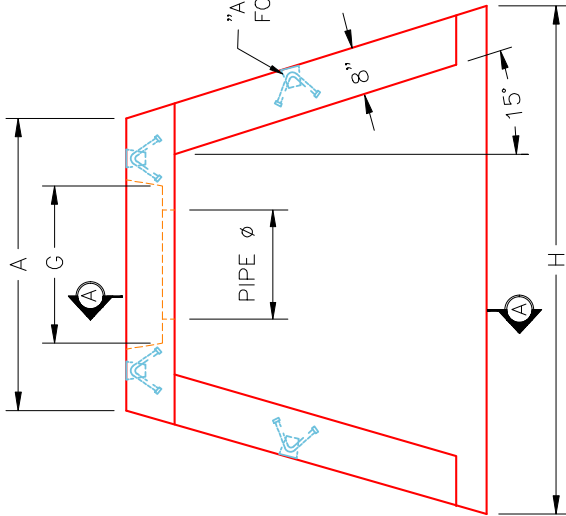
**Structure ID: FES-508-6 HW**

**P1 HWSF18F**

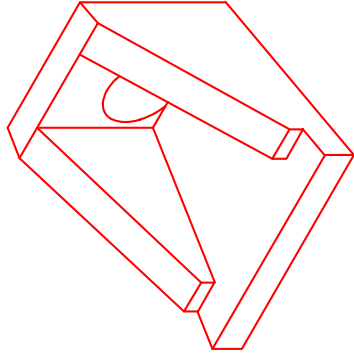
**18" - HW SLOPED & FLARED w/FLAT BOTTOM F/F**

DIMENSIONS									
PIPE $\phi$	A	B	C	D	E	F	G	H	WEIGHT
18"	3'-6"	4'-4"	2'-10"	8"	5'-0"	4"	2'-2"	6'-0"	3,711 LBS.

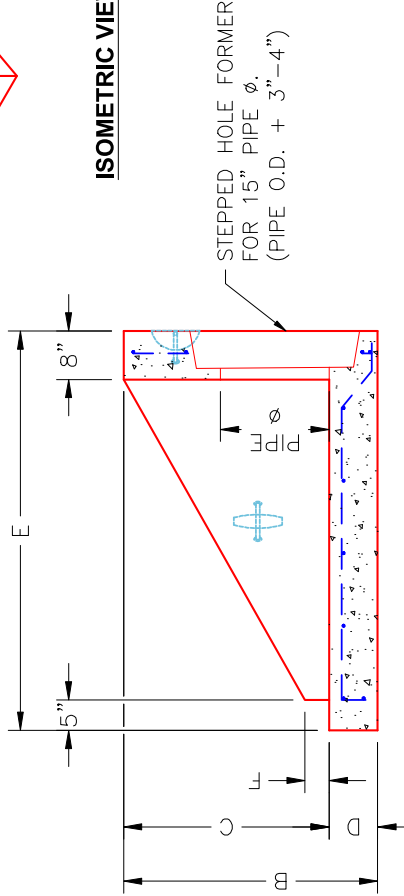
"A-ANCHOR" LIFTING SYSTEM FOR PLANT & FIELD HANDLING.



**PLAN VIEW**



**ISOMETRIC VIEW**



**SECTION A-A**

**FRONT ELEVATION**

**NOTES:**

1. CONCRETE: KYTC APPROVED.
2. REINFORCING: #4 BAR @ 12" C/C E.W. - GRADE 60, (WITH 2" CONCRETE COVER MINIMUM)
3. REINFORCING BARS TO BE TACK WELDED OR TIED.
4. PIPE AND LIFTING ANCHOR POCKETS TO BE GROUTED WITH KYTC APPROVED NON-SHRINK GROUT.
5. DRAWING TO BE USED IN CONJUNCTION WITH KYTC STD. DRAWING RDH-020-03 AND THE STANDARD SPECIFICATIONS FOR ROAD AND BRIDGE CONSTRUCTION.
6.  $\frac{3}{8}$ " CHAMFER ON ALL EXPOSED EDGES.
7. PREFORMED STEPPED HOLE SIZED AS PER O.D. OF PIPE + 3"-4".

**INFRASTRUCTURE PRECAST, INC.**  
 981 WEST 7TH ST., BEAVER DAM, KY, 42320  
 PHONE: (270) 363-2238, FAX: (270) 298-7424

KYTC 18" SLOPED & FLARED HEADWALL  
 W/ FLAT BOTTOM  
 DRAWING NO.: HWSF18F DATE: 9-23-25  
 REVIEWED BY: J.H. ROSS, PE DRAWN BY: J. COPPAGE  
 WEB: WWW.ICASTINC.COM SCALE: NTS

