

Job Name: 26-1421 855355 Camp Ground Road  
 Job Location: Louisville, KY  
 Contractor: Contech Engineering Solutions

Plant: Beaver Dam  
 2/25/2026 3:28:25 PM

Tech: S. Felletter  
 PC: T. Sekula



**Structure ID: 10-CS-5**

**P3 MH060LD13-30ECC**

**MH FLAT TOP SPEC. (30" ECC HOLE) F/G**

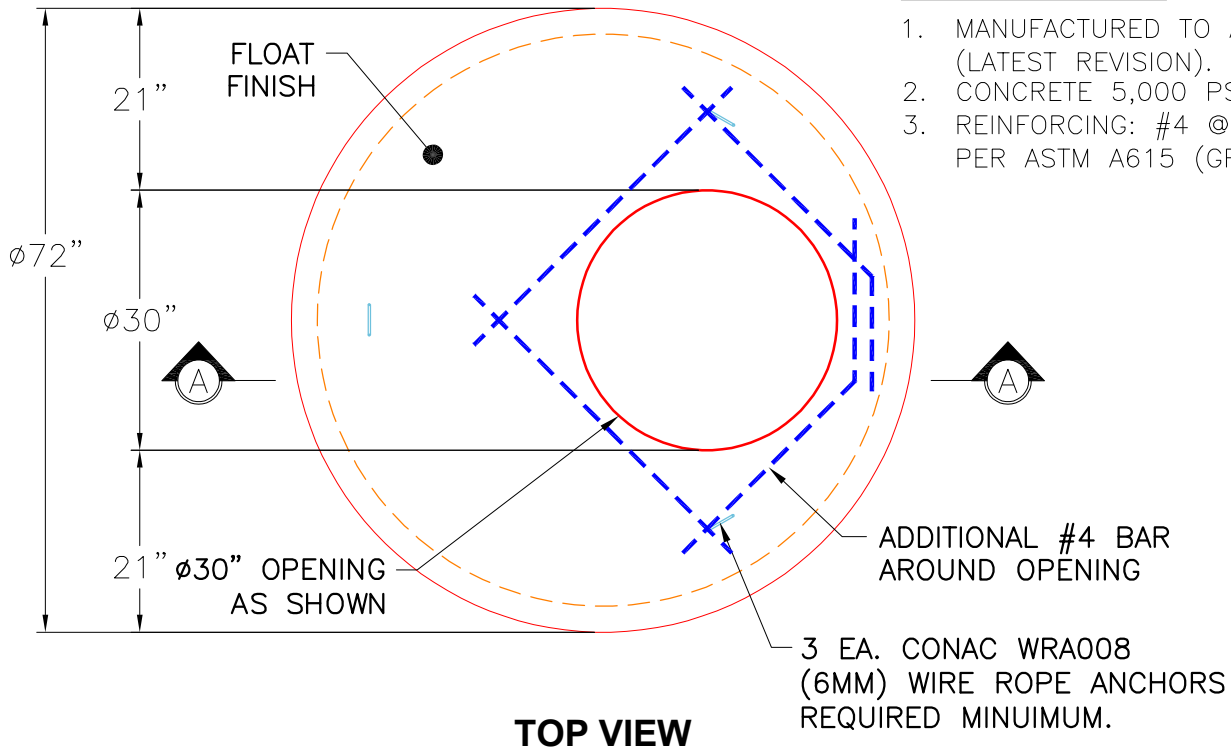
- P4) 30" - CASTING HEIGHT - 4"
- P3) 60" - MH FLAT TOP SPEC. (30" ECC HOLE) F/G - 13"
- P2) 60" - MH RISER T/G - 72"
- P1) 60" - MH BASE T/h - 18"
- 1) CVSTENCILING
- 1) ASSEMBLY REQUIRED
- 2) 60" - Conseal CS-102 1.00"
- 2) Hole - 16

0 lb  
 2589 lb  
 7303 lb  
 4612 lb  
 0 lb  
 0 lb  
 0 lb  
 0 lb  
 0 lb  
 -----  
 Structure Total: 14504 lb

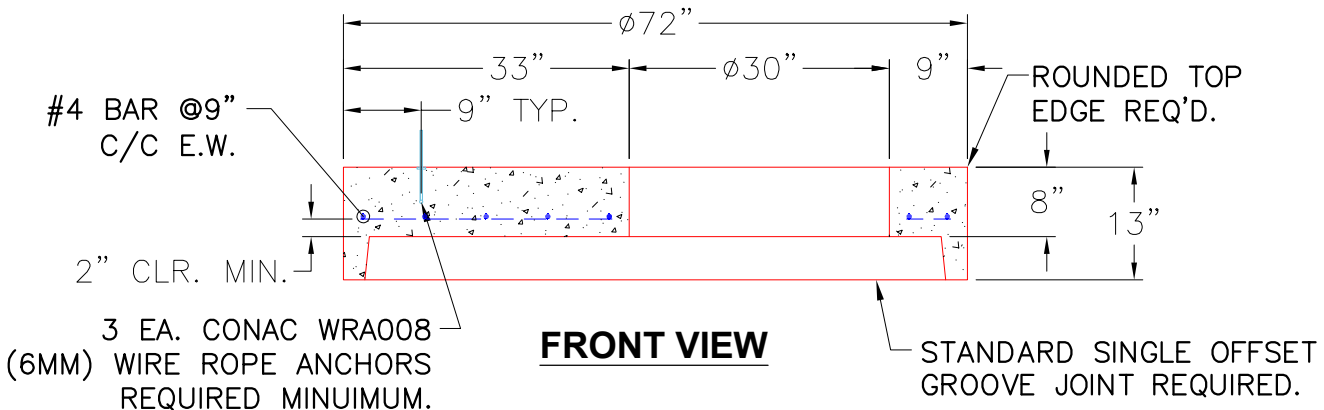
**Structure Notes:**  
 4" CASTING BY OTHERS  
 LIFTING ANCHORS TO BE INSTALLED  
 ON THE OUTSIDE OF THE STRUCTURE  
 ICAST TO INSTALL THE INTERNALS  
 CONTECH'S LOGO AS WELL AS THE  
 INLET AND OUTLET MUST BE  
 STENCILED ONTO THE STRUCTURE

GENERAL NOTES:

1. MANUFACTURED TO ASTM C-478 (LATEST REVISION).
2. CONCRETE 5,000 PSI AT 28 DAYS.
3. REINFORCING: #4 @ 9" O.C. E.W. PER ASTM A615 (GRADE 60)



**TOP VIEW**



**FRONT VIEW**

Coating (Int):  
 Coating (Ext):

Seam Up: Flat  
 Seam Dn: Groove

Wall Thickness: 6"

Height (Ext): 13"

Weight (Net): 2589 lb  
 Volume (Net): 0.66cu.yd