

Job Name: 26-1415 - Perdue Foods Manhole  
 Job Location: Cromwell, KY  
 Contractor: Industrial Service Company

Plant: 100  
 2/23/2026 2:24:39 PM

Tech: J. Horsley  
 PC: J. Jarvis



**Structure ID: 1 SS-MHDH**

**P1 MH060DHRSVH**

**MH DH RISER Custom Ht T/F**

P3) 60" - CASTING HEIGHT - 0"	0 lb
P2) 60" - MH RISER SPECIAL F/G - 60"	6264 lb
P1) 60" - MH DH RISER Custom Ht T/F - 56"	5846 lb
1) JOINT WRAP - 0.065"x6"x50' CONSEAL CS212	0 lb
1) JOINT WRAP PRIMER - CONSEAL CS-75 (1 gal.)	0 lb
2) 60" - Conseal CS-102 1.00" (Double)	0 lb
10) MH Step ML-10-TDS-NCR - 10"	0 lb
Structure Total:	12110 lb

**Structure Notes:**  
 1. PER ASTM C478 SPECIFICATIONS.  
 2. CONCRETE = 4,000 PSI AT 28 DAYS.  
 3. CASTING/GRATE BY OTHERS.  
 4. **CONFTRACTOR TO FIELD CORE HOLES IN RISER.**

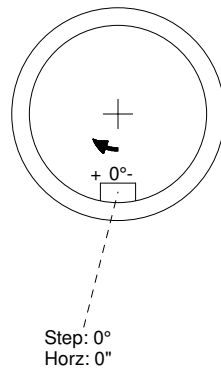
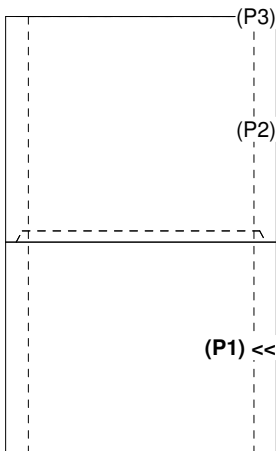
REINFORCING PER ASTM A615 (GRADE 60).  
 - RISER/WALLS (As .18)

Rim: 462.75' Rim to Invert: 0' Slack: 0.16" Sump: 116.16" Step Position: 0°

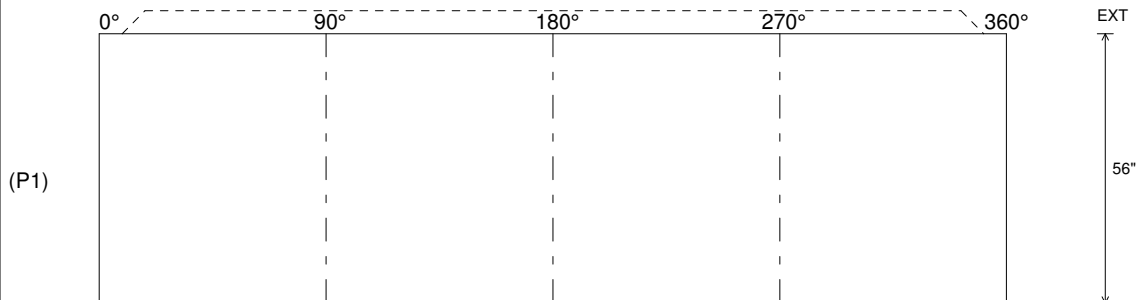
Position	Elev	Angle	Ext. (cw)	Pipe	Pipe OD	Connector	Hole	Horz Size	Up (L)	Offset
Invert 1										
Invert 2										
Invert 3										
Invert 4										
Invert 5										
Invert 6										
Invert 7										
Invert 8										

RIGHT-SIDE UP VIEW (int. dimensions)

UPSIDE-DOWN VIEW (int. dimenions)



INSIDE WALL DIMENSIONS



Coating (Int): Coating (Ext):	Seam Up: Tongue Seam Dn: Flat	Wall Thickness: 6" Floor Height: 0"	Height (Int): 56" Height (Ext): 56"	Weight (Net): 5846 lb Volume (Net): 1.49cu.yd
----------------------------------	----------------------------------	--	--	--