

Job Name: 26-1395 - 200 Gallon Sand Trap  
 Job Location: Bowling Green, KY  
 Contractor: Bowling Green Winnelson Co.

Plant: 100

3/12/2026 10:15:51 AM

Tech: Jared - F

PC: A. Chambers



**Structure ID: 200 Gal Sand Trap**

**P1 BX2448-06BAVF-FLAT**

**BOX BASE 6inW, 6inF, Variable Ht F/n**

- P3) 24" x 24" - CASTING (cast in) - 4"
- P2) 24" x 48" - BX FLAT LID 6inW w/ 2x CASTINGS CAST IN F/F - 6"
- P1) 24" x 48" - BOX BASE 6inW, 6inF, Variable Ht F/n - 48"
- 1) JOINT WRAP - 0.065"x6"x50' CONSEAL CS212
- 1) JOINT WRAP PRIMER - CONSEAL CS-75 (1 gal.)
- 1) 24" x 48" - Conseal CS-102 1.00" (Double)
- 1) 24" x 24" - Conseal CS-102 1.00" (Double)
- 4) Hole - 8

0 lb  
 744 lb  
 5046 lb  
 0 lb  
 0 lb  
 0 lb  
 0 lb  
 0 lb  
 0 lb  
 Structure Total: 5790 lb

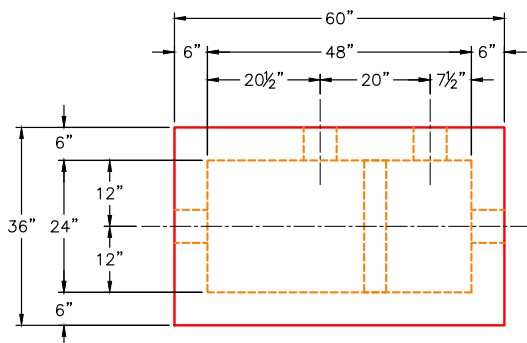
**Structure Notes:**  
 1. PER ASTM C913 SPECIFICATIONS.  
 2. CONCRETE = 5,000 PSI AT 28 DAYS.  
 3. NO STEPS AND NO INVERT CHANNEL.  
 4. CASTING BY I-CAST (HOE 280T F/G CAST-IN w/FLANGE UP & HOE MCS-82 F/C)

REINFORCING PER ASTM A615 (GRADE 60).  
 - TOP SLAB (AS.62) #5 BARS AT 6" C.C.E.W  
 - WALLS (AS.12) #5 BARS AT 12" C.C.E.W  
 - FLOOR (AS.12) #5 BARS AT 12" C.C.E.W

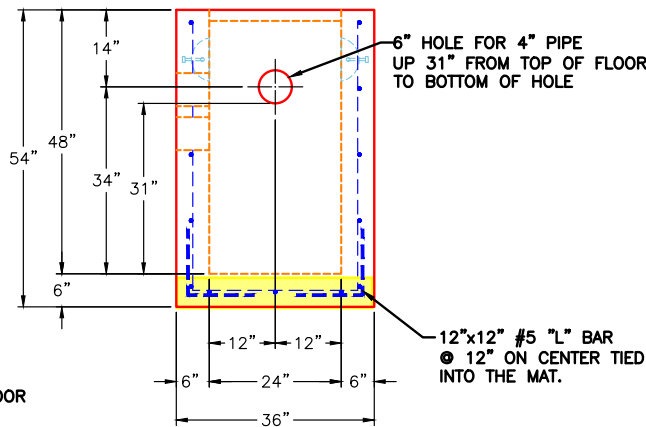
Rim: 4.5' Rim to Invert: 3.5' Slack: 0" Sump: 12" Step Position:

**FIRST POUR DRAWING**

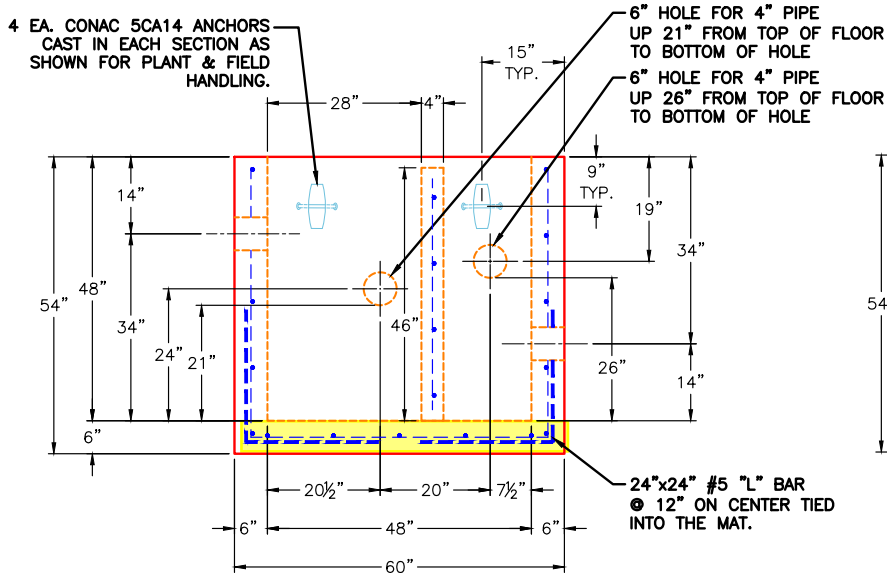
- GENERAL NOTES:**
1. MANUFACTURED TO ASTM C-913 (LATEST REVISION).
  2. CONCRETE: 5,000 PSI AT 28 DAYS.
  3. REINFORCING: #5 BAR @ 12" E.W. O.C. (GRADE 60).
  4. WEIGHT:  
 FIRST POUR - 1,088 LBS.  
 SECOND POUR - 4,374 LBS.  
 TOTAL - 5,462 LBS.



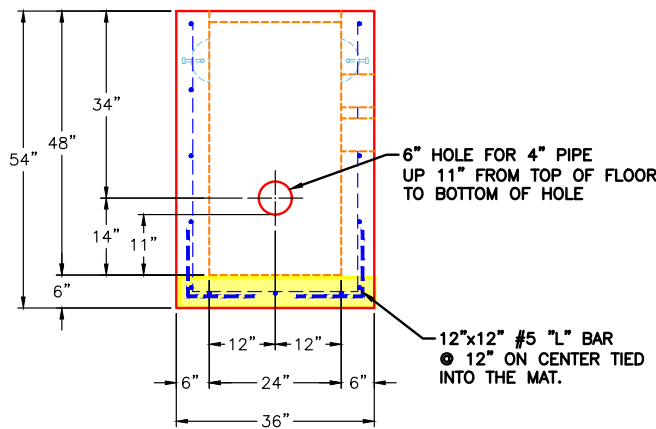
**PLAN VIEW**



**LEFT VIEW**



**FRONT VIEW**



**RIGHT VIEW**

Coating (Int):  
 Coating (Ext):

Seam Up: Flat  
 Seam Dn: n/a

Wall Thickness: 6"  
 Floor Height: 6"

Height (Int): 48"  
 Height (Ext): 54"

Weight (Net): 5046 lb  
 Volume (Net): 1.29cu.yd

Job Name: 26-1395 - 200 Gallon Sand Trap  
 Job Location: Bowling Green, KY  
 Contractor: Bowling Green Winnelson Co.

Plant: 100  
 3/12/2026 10:16:13 AM

Tech: Jared - F  
 PC: A. Chambers



**Structure ID: 200 Gal Sand Trap**

**P1 BX2448-06BAVF-FLAT**

**BOX BASE 6inW, 6inF, Variable Ht F/n**

- P3) 24" x 24" - CASTING (cast in) - 4"
- P2) 24" x 48" - BX FLAT LID 6inW w/ 2x CASTINGS CAST IN F/F - 6"
- P1) 24" x 48" - BOX BASE 6inW, 6inF, Variable Ht F/n - 48"
- 1) JOINT WRAP - 0.065"x6"x50' CONSEAL CS212
- 1) JOINT WRAP PRIMER - CONSEAL CS-75 (1 gal.)
- 1) 24" x 48" - Conseal CS-102 1.00" (Double)
- 1) 24" x 24" - Conseal CS-102 1.00" (Double)
- 4) Hole - 8

0 lb  
 744 lb  
 5046 lb  
 0 lb  
 0 lb  
 0 lb  
 0 lb  
 0 lb  
 0 lb  
 Structure Total: 5790 lb

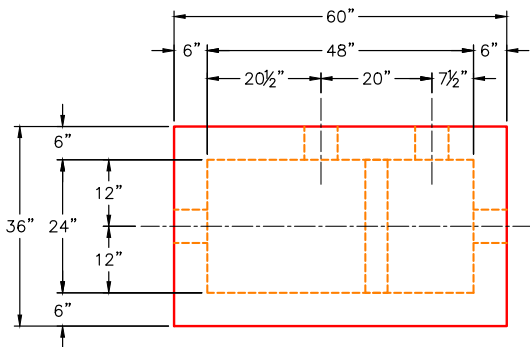
**Structure Notes:**  
 1. PER ASTM C913 SPECIFICATIONS.  
 2. CONCRETE = 5,000 PSI AT 28 DAYS.  
 3. NO STEPS AND NO INVERT CHANNEL.  
 4. CASTING BY I-CAST (HOE 280T F/G CAST-IN w/FLANGE UP & HOE MCS-82 F/C)

REINFORCING PER ASTM A615 (GRADE 60).  
 - TOP SLAB (AS.62) #5 BARS AT 6" C.C.E.W  
 - WALLS (AS.12) #5 BARS AT 12" C.C.E.W  
 - FLOOR (AS.12) #5 BARS AT 12" C.C.E.W

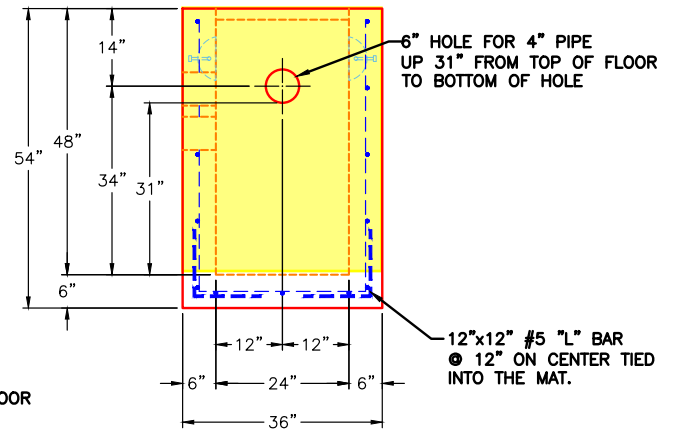
Rim: 4.5' Rim to Invert: 3.5' Slack: 0" Sump: 12" Step Position:

**SECOND POUR DRAWING**

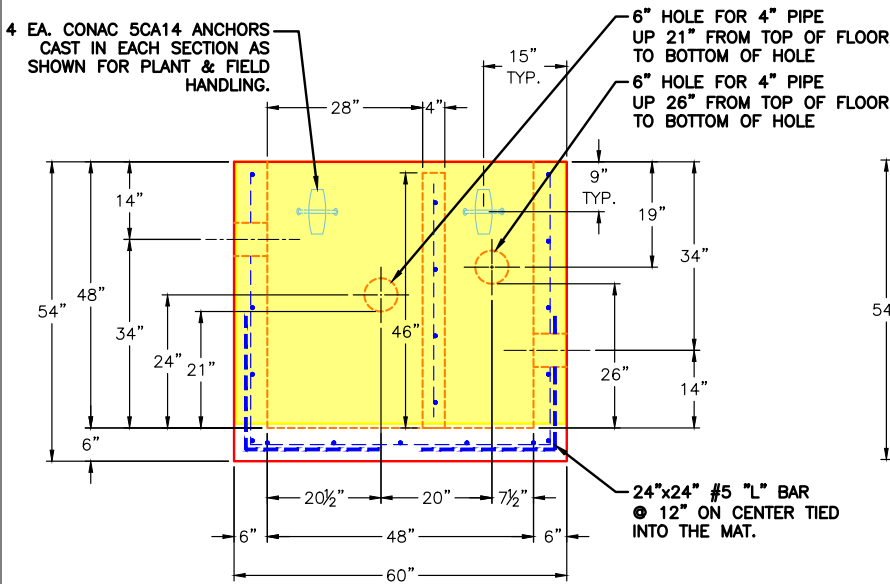
- GENERAL NOTES:**
1. MANUFACTURED TO ASTM C-913 (LATEST REVISION).
  2. CONCRETE: 5,000 PSI AT 28 DAYS.
  3. REINFORCING: #5 BAR @ 12" E.W. O.C. (GRADE 60).
  4. WEIGHT:  
 FIRST POUR - 1,088 LBS.  
 SECOND POUR - 4,374 LBS.  
 TOTAL - 5,462 LBS.



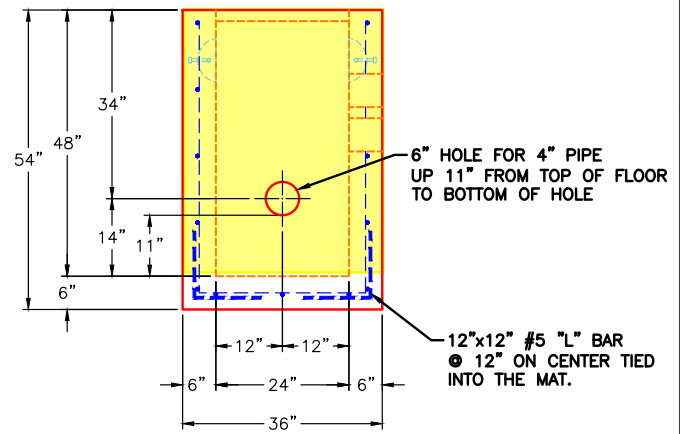
**PLAN VIEW**



**LEFT VIEW**



**FRONT VIEW**



**RIGHT VIEW**

Coating (Int):  
 Coating (Ext):

Seam Up: Flat  
 Seam Dn: n/a

Wall Thickness: 6"  
 Floor Height: 6"

Height (Int): 48"  
 Height (Ext): 54"

Weight (Net): 5046 lb  
 Volume (Net): 1.29cu.yd