

Job Name: 26-1393 - Dry Run WWTP Material
 Job Location: Shelbyville, KY 40601
 Contractor: Smith Contractors, Inc.

Plant: 100

Tech: Jared - F

3/16/2026 1:24:49 PM

PC: E. Bradley

Structure ID: SD-6-4 ST-CB

P2 MH048LD12S

MH FLAT TOP w/34"x34" Hole F/G

- P3) 34" x 34" - CASTING HEIGHT - 3"
- P2) 48" - MH FLAT TOP w/34"x34" Hole F/G - 12"
- P1) 48" - MH BASE Custom Ht T/n - 40"
- 1) CASTING - HOE 595 F/G
- 1) 48" - Conseal CS-102 1.00"
- 2) Hole - 18
- 3) MH Step ML-10-TDS-NCR - 10"

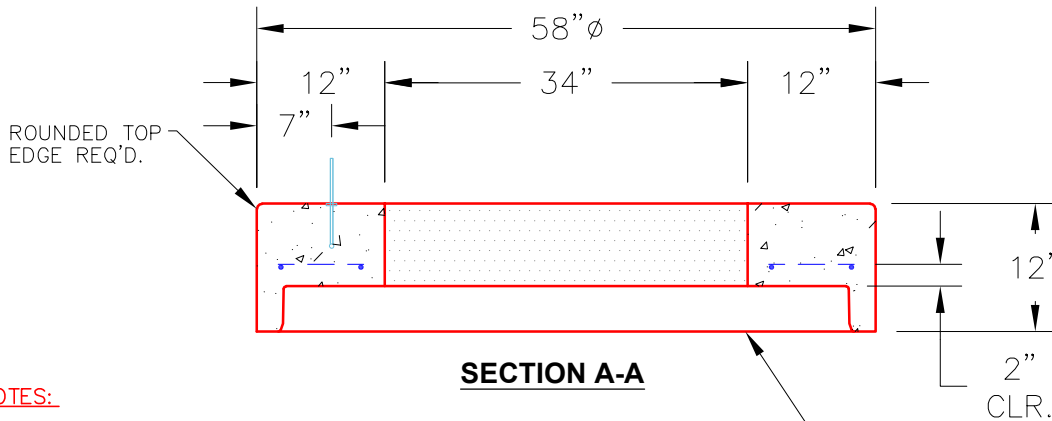
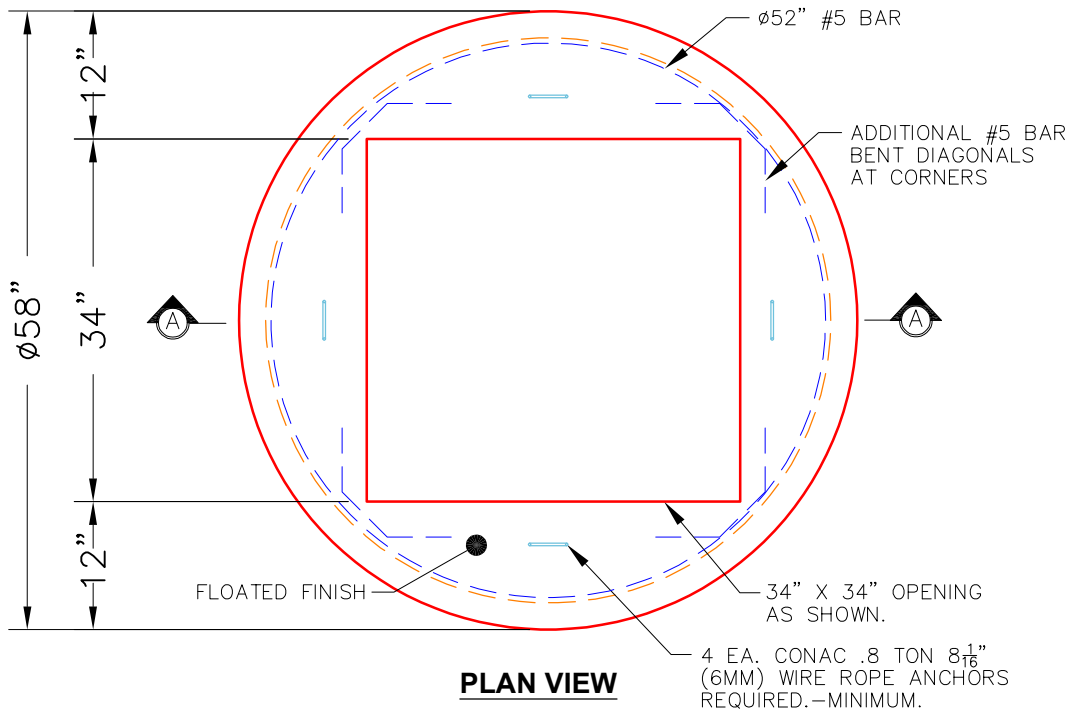
0 lb
 1194 lb
 3907 lb
 376 lb
 0 lb
 0 lb
 0 lb

 Structure Total: 5477 lb

Structure Notes:

1. PER ASTM C478 SPECIFICATIONS.
2. CONCRETE = 4,000 PSI AT 28 DAYS.
3. NO INVERT CHANNEL.
4. CASTING BY ICAST (HOE 595 F/G).

REINFORCING PER ASTM A615 (GRADE 60).
 - TOP SLAB (As .62) #5 BARS AT 6" C.C.E.W..
 - RISER/WALLS (As .12)
 - FLOOR (As .31) #5 BARS AT 12" C.C.E.W.



NOTES:

1. MANUFACTURED TO ASTM C-478 (LATEST REVISION).
2. CONCRETE: 5,000 PSI AT 28 DAYS.
3. REINFORCING: #5 BAR @ 10" O.C. E.W. (GRADE 60).

Coating (Int):
 Coating (Ext):

Seam Up: Flat
 Seam Dn: Groove

Wall Thickness: 5"

Height (Ext): 12"

Weight (Net): 1194 lb
 Volume (Net): 0.3cu.yd