

Job Name: 26-1393 - Dry Run WWTP Material
 Job Location: Shelbyville, KY 40601
 Contractor: Smith Contractors, Inc.

Plant: 100
 3/12/2026 7:49:27 PM

Tech: Jared - F
 PC: E. Bradley

Structure ID: SD-5-3 ST-CB

P3 MH048LD12S

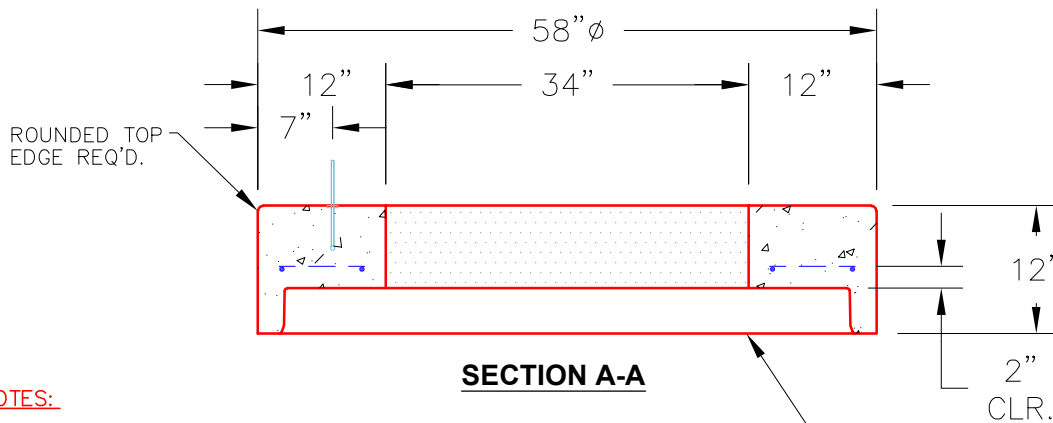
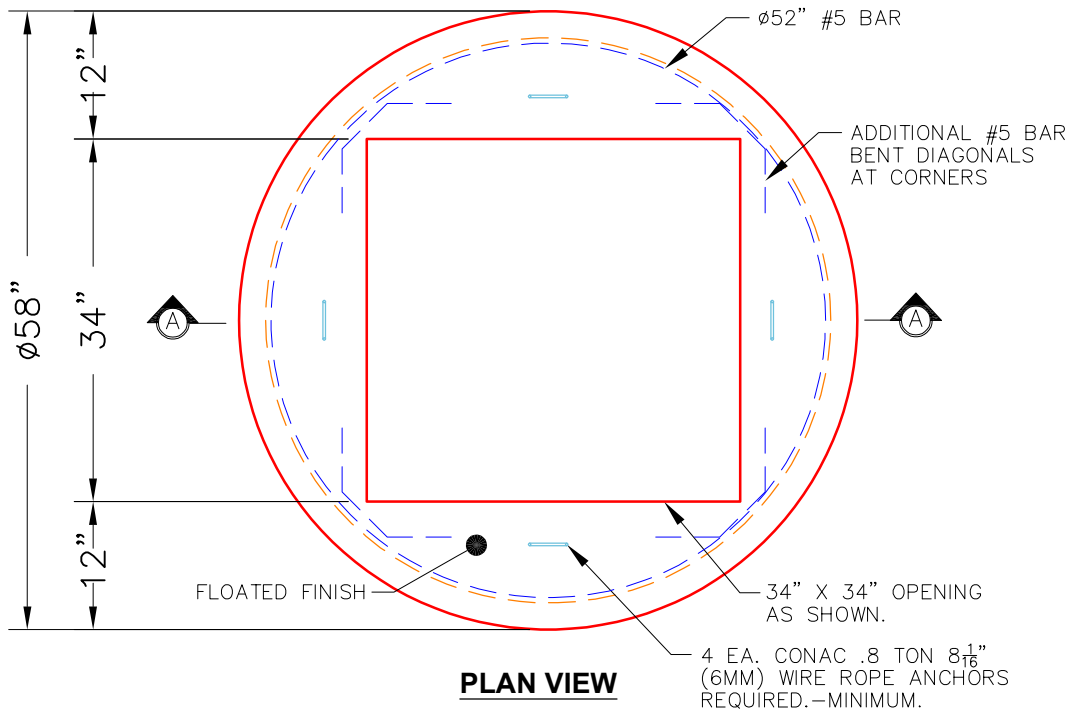
MH FLAT TOP w/34"x34" Hole F/G

- P4) 34" x 34" - CASTING HEIGHT - 3"
- P3) 48" - MH FLAT TOP w/34"x34" Hole F/G - 12"
- P2) 48" - MH RISER T/G - 36"
- P1) 48" - MH BASE Custom Ht T/n - 39"
- 1) CASTING - HOE 595 F/G
- 2) 48" - Conseal CS-102 1.00"
- 1) Hole - 18
- 6) MH Step ML-10-TDS-NCR - 10"

0 lb
 1194 lb
 2515 lb
 3946 lb
 376 lb
 0 lb
 0 lb
 0 lb

 Structure Total: 8031 lb

Structure Notes:
 1. PER ASTM C478 SPECIFICATIONS.
 2. CONCRETE = 4,000 PSI AT 28 DAYS.
 3. NO INVERT CHANNEL.
 4. CASTING BY ICAST (HOE 595 F/G).
 REINFORCING PER ASTM A615 (GRADE 60).
 - TOP SLAB (As .62) #5 BARS AT 6" C.C.E.W..
 - RISER/WALLS (As .12)
 - FLOOR (As .31) #5 BARS AT 12" C.C.E.W.



- NOTES:**
1. MANUFACTURED TO ASTM C-478 (LATEST REVISION).
 2. CONCRETE: 5,000 PSI AT 28 DAYS.
 3. REINFORCING: #5 BAR @ 10" O.C. E.W. (GRADE 60).

Coating (Int): Coating (Ext):	Seam Up: Flat Seam Dn: Groove	Wall Thickness: 5"	Height (Ext): 12"	Weight (Net): 1194 lb Volume (Net): 0.3cu.yd
----------------------------------	----------------------------------	--------------------	-------------------	---