

Job Name: 26-1393 - Dry Run WWTP Material
Job Location: Shelbyville, KY 40601
Contractor: Smith Contractors, Inc.

PC: E. Bradley
 TECH: Jared - F
 Plant: 100



Structure ID: PS-8-5 SS-MH

Spec: Sanitary
 Type: SAN.MH
 Size: 48"

Rim: 730.62'
 Invert: 726.81'
 Rim to Invert: 3.81'

Sump: 2"
 Floor (Top): 726.643'
 Floor Height: 6"

Floor (Bot): 726.143'
 Overall Height: 4.417'
 Slack: 0.72"

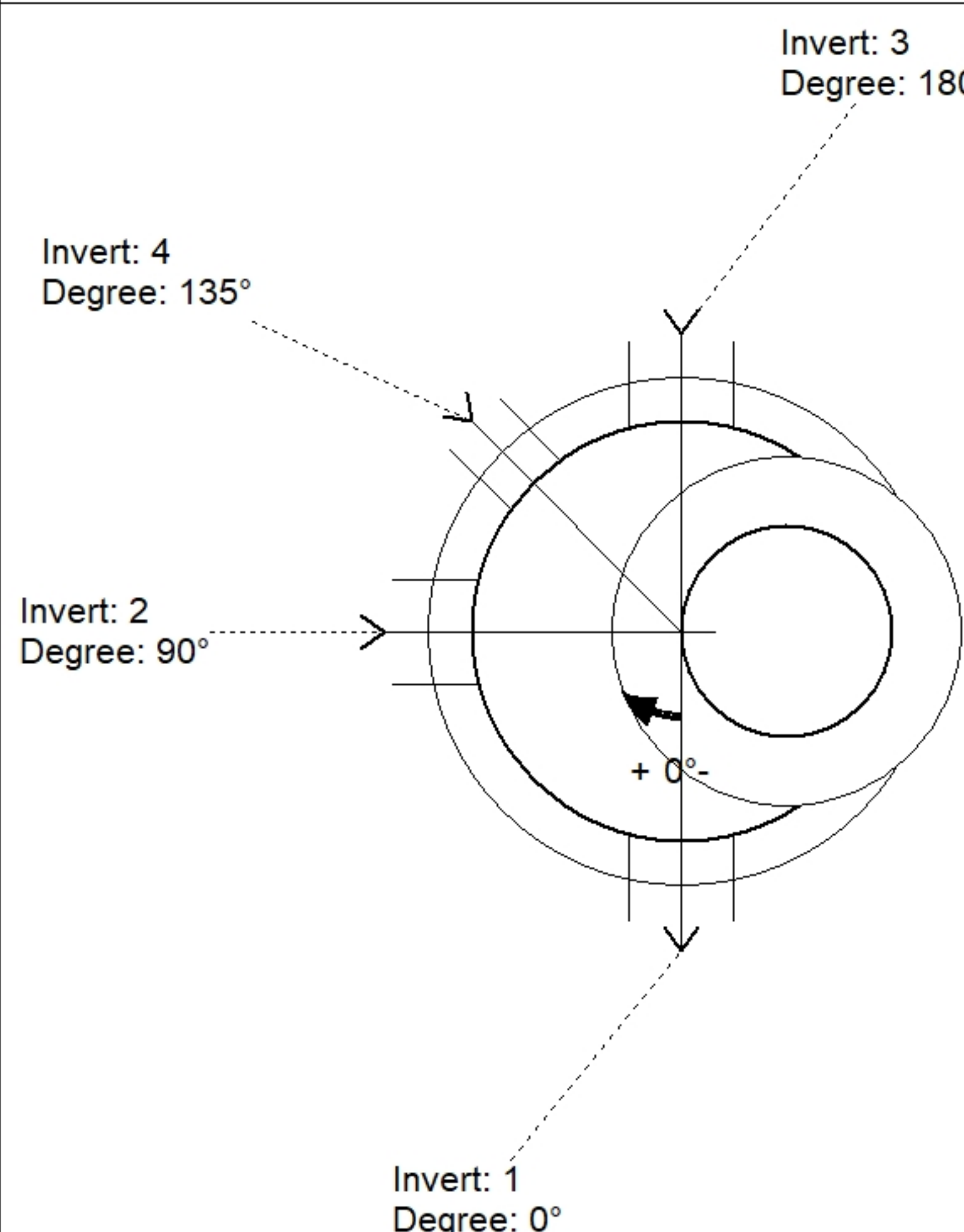
Structure Notes:

1. PER ASTM C478 SPECIFICATIONS.
2. CONCRETE = 4,000 PSI AT 28 DAYS.
3. NO STEPS.
4. CASTING BY ICAST (HOE MC-350 F/C SANITARY).

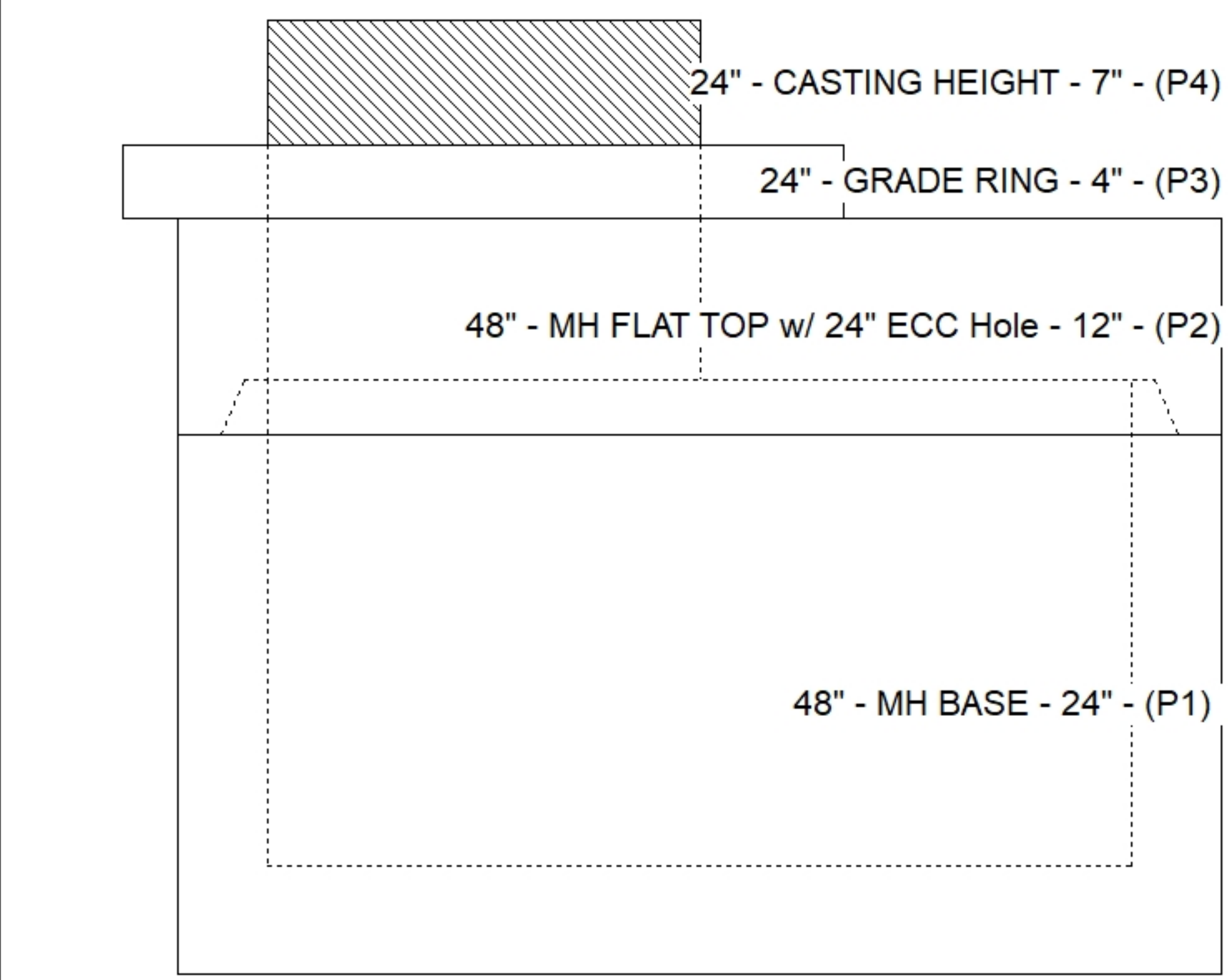
REINFORCING PER ASTM A615 (GRADE 60).
 - TOP SLAB = H2O LOADING.
 - RISER/WALLS (As .12)
 - FLOOR (As .31) #5 BARS AT 12" C.C.E.W.

STRUCTURE SUMMARY:

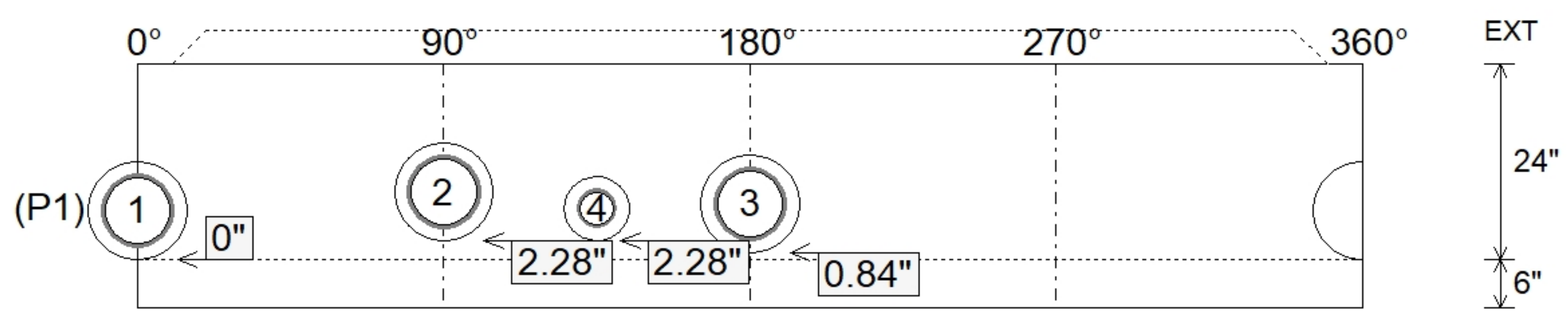
P4) 24" - CASTING HEIGHT - 7"	0 lb
P3) 24" - GRADE RING - 4"	270 lb
P2) 48" - MH FLAT TOP w/ 24" ECC Hole - 12"	1561 lb
P1) 48" - MH BASE - 24"	2842 lb
1) JOINT WRAP - 0.065"x6"x50' CONSEAL CS212	0 lb
1) JOINT WRAP PRIMER - CONSEAL CS-75 (1 gal.)	0 lb
1) 48" - MH INVERT CHANNEL - FULL HEIGHT	1440 lb
1) CASTING - HOE MC-350 F/C Sanitary	305 lb
1) 48" - Conseal CS-102 1.00" (Double)	0 lb
3) PSX - 12M NYLO	24 lb
1) PSX - 8QRS-S NYLO	6 lb
Structure Total:	6448 lb



Position	Elev	Angle	Pipe	Pipe OD	Hole	Connector	Up (")	Ref
Rim	730.62'							
Reducer								
Invert 1	726.81'	0°	8" DI	9"	12"	PSX 12M NYLO	0"	P1
Invert 2	727'	90°	8" DI	9"	12"	PSX 12M NYLO	2.28"	P1
Invert 3	726.88'	180°	8" DI	9"	12"	PSX 12M NYLO	0.84"	P1
Invert 4	727'	135°	4" DI	4.75"	8"	PSX 8QRS-S NYLO	2.28"	P1
Invert 5								
Invert 6								
Invert 7								
Invert 8								



Default - Interior Dimensions



Submittal Drawing
 3/17/2026 10:43:57 AM

SUBMITTAL
 APPROVED BY: