

Job Name: 26-1393 - Dry Run WWTP Material  
 Job Location: Shelbyville, KY 40601  
 Contractor: Smith Contractors, Inc.

Plant: 100  
 3/12/2026 7:49:27 PM

Tech: Jared - F  
 PC: E. Bradley

**Structure ID: PS-8-5 SS-MH**

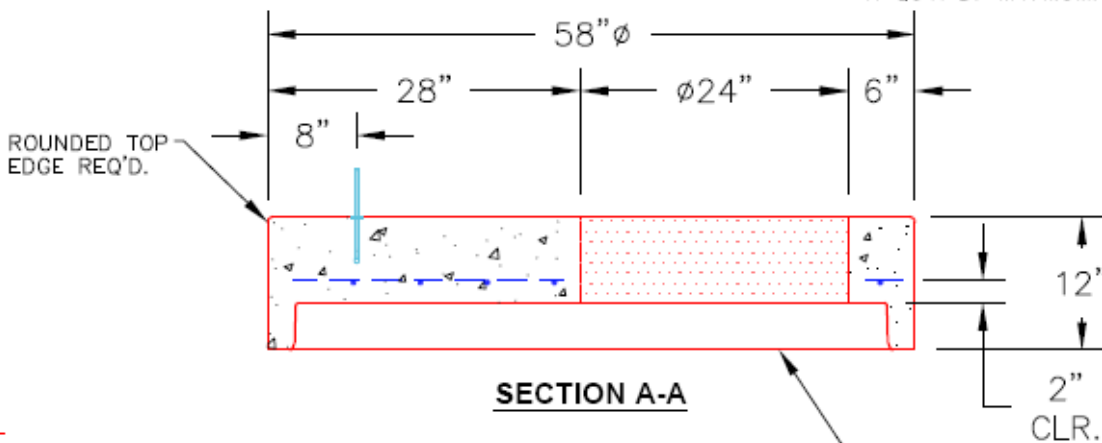
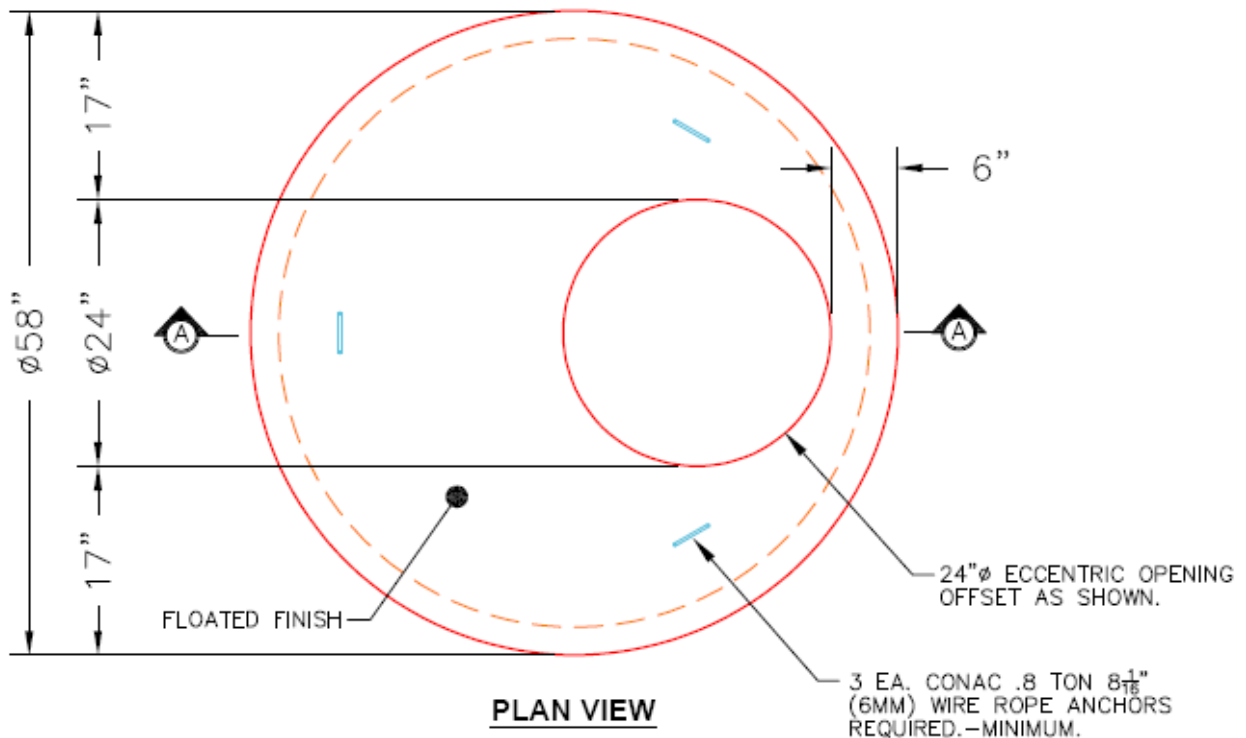
**P2 MH048LD12ECC**

**MH FLAT TOP w/ 24" ECC Hole F/G**

- P4) 24" - CASTING HEIGHT - 7"
- P3) 24" - GRADE RING F/F - 4"
- P2) 48" - MH FLAT TOP w/ 24" ECC Hole F/G - 12"
- P1) 48" - MH BASE T/n - 24"
- 1) JOINT WRAP - 0.065"x6"x50' CONSEAL CS212
- 1) JOINT WRAP PRIMER - CONSEAL CS-75 (1 gal.)
- 1) 48" - MH INVERT CHANNEL - FULL HEIGHT
- 1) CASTING - HOE MC-350 F/C Sanitary
- 1) 48" - Conseal CS-102 1.00" (Double)
- 3) PSX - 12M NYLO
- 1) PSX - 8QRS-S NYLO

0 lb  
 270 lb  
 1561 lb  
 2842 lb  
 0 lb  
 0 lb  
 1440 lb  
 305 lb  
 0 lb  
 24 lb  
 6 lb  
 -----  
 Structure Total: 6448 lb

**Structure Notes:**  
 1. PER ASTM C478 SPECIFICATIONS.  
 2. CONCRETE = 4,000 PSI AT 28 DAYS.  
 3. NO STEPS.  
 4. CASTING BY ICAST (HOE MC-350 F/C SANITARY).  
  
 REINFORCING PER ASTM A615 (GRADE 60).  
 - TOP SLAB = H2O LOADING.  
 - RISER/WALLS (As .12)  
 - FLOOR (As .31) #5 BARS AT 12" C.C.E.W.



**NOTES:**

- 1. MANUFACTURED TO ASTM C-478 (LATEST REVISION).
- 2. CONCRETE: 5,000 PSI AT 28 DAYS.
- 3. REINFORCING: #5 BAR @ 10" O.C. E.W. (GRADE 60).

Coating (Int):  
 Coating (Ext):

Seam Up: Flat  
 Seam Dn: Groove

Wall Thickness: 5"

Height (Ext): 12"

Weight (Net): 1561 lb  
 Volume (Net): 0.42cu.yd