



Structure ID: HD-1-2-HW

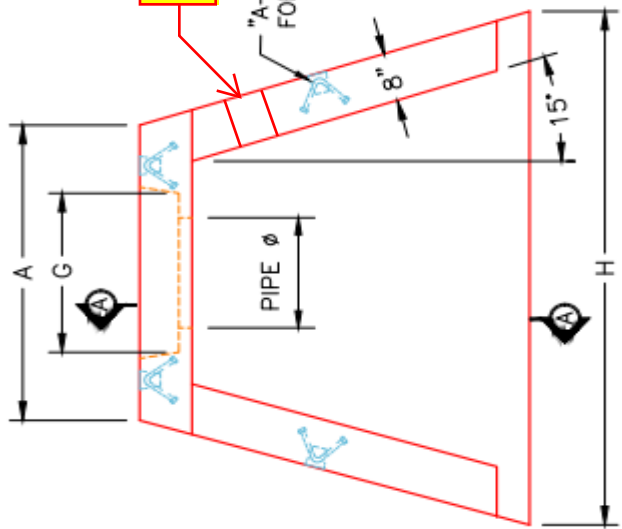
P1 HWSF12F

12" - HW SLOPED & FLARED w/FLAT BOTTOM F/F

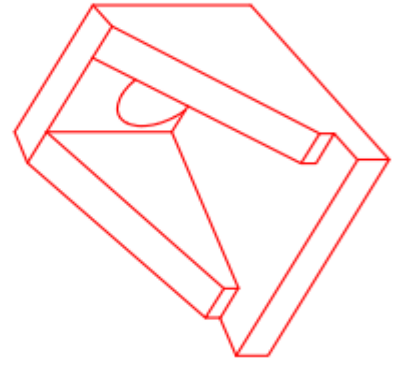
DIMENSIONS									
PIPE ϕ	A	B	C	D	E	F	G	H	WEIGHT
12"	2'-9"	2'-8"	2'-0"	8"	4'-0"	3"	1'-6"	4'-9"	2,255 LBS.

CORE 6" HOLE IN THE SIDE WALL

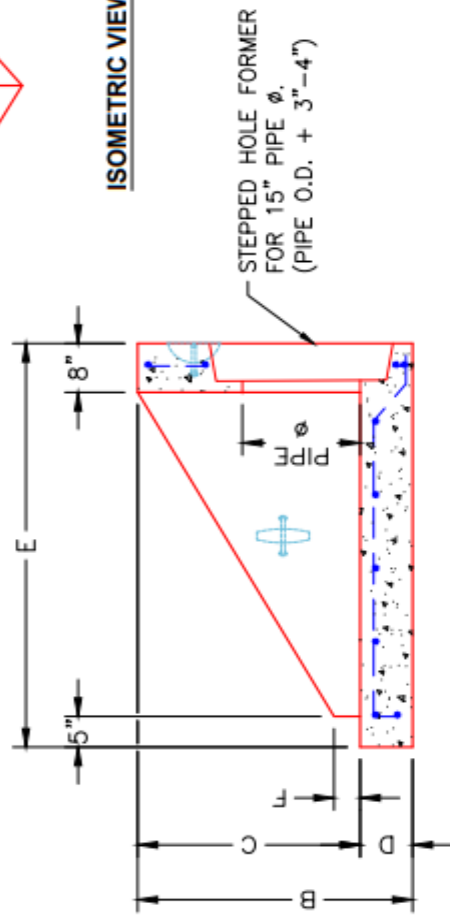
"A-ANCHOR" LIFTING SYSTEM FOR PLANT & FIELD HANDLING.



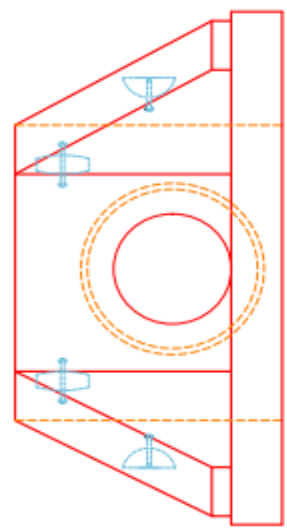
PLAN VIEW



ISOMETRIC VIEW



SECTION A-A



FRONT ELEVATION

INFRASTRUCTURE PRECAST, INC. 981 WEST 7TH ST., BEAVER DAM, KY. 42320 PHONE: (270) 363-2238, FAX: (270) 298-7424	
KYTC 12" SLOPED & FLARED HEADWALL W/ FLAT BOTTOM	
DRAWING NO.: HWSF12F	DATE: 9-23-25
REVIEWED BY: J.H. ROSS, PE	DRAWN BY: J. COPPAGE
WEB: WWW.CASTING.COM	SCALE: NTS

- NOTES:**
1. CONCRETE: KYTC APPROVED.
 2. REINFORCING: #4 BAR @ 12" C/C E.W.-GRADE 60, (WITH 2" CONCRETE COVER MINIMUM)
 3. REINFORCING BARS TO BE TACK WELDED OR TIED.
 4. PIPE AND LIFTING ANCHOR POCKETS TO BE GROUTED WITH KYTC APPROVED NON-SHRINK GROUT.
 5. DRAWING TO BE USED IN CONJUNCTION WITH KYTC STD. DRAWING RDH-020-03 AND THE STANDARD SPECIFICATIONS FOR ROAD AND BRIDGE CONSTRUCTION.
 6. $\frac{3}{8}$ " CHAMFER ON ALL EXPOSED EDGES.
 7. PREFORMED STEPPED HOLE SIZED AS PER O.D. OF PIPE + 3" - 4".