

Job Name: 26-1343 - KSFB/KEC Backup Power Supply
 Job Location: Louisville, KY 40209
 Contractor: Dan Cristiani Excavating Co. Inc.

Plant: 100
 4/30/2026 8:06:34 PM

Tech: Jared- F
 PC: J.Jarvis



Structure ID: MH-1-4 STMH

P2 MH048LD12ECC

MH FLAT LID w/24in ECC Hole F/G

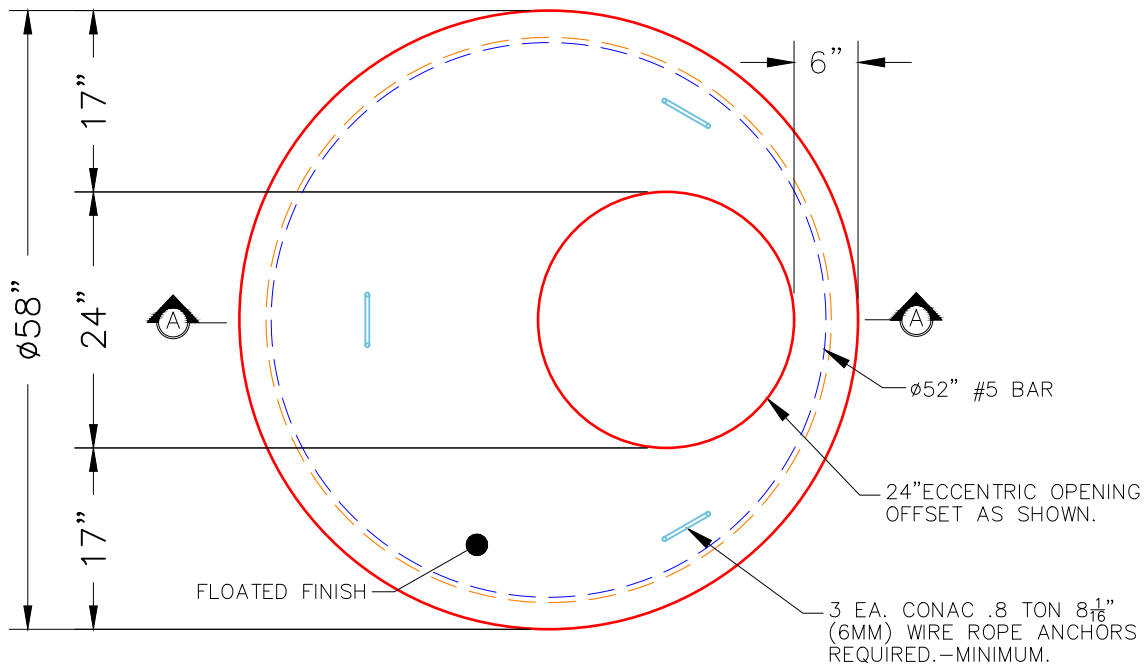
- P3) 24" - CASTING HEIGHT - 7"
- P2) 48" - MH FLAT LID w/24in ECC Hole F/G - 12"
- P1) 48" - MH BASE Custom Ht T/n - 32"
- 1) CASTING - HOE MC-420 F/C Storm
- 1) 48" - Conseal CS-102 1.00"
- 1) Hole - 20
- 2) Hole - 18

0 lb
 1561 lb
 3212 lb
 340 lb
 0 lb
 0 lb
 0 lb

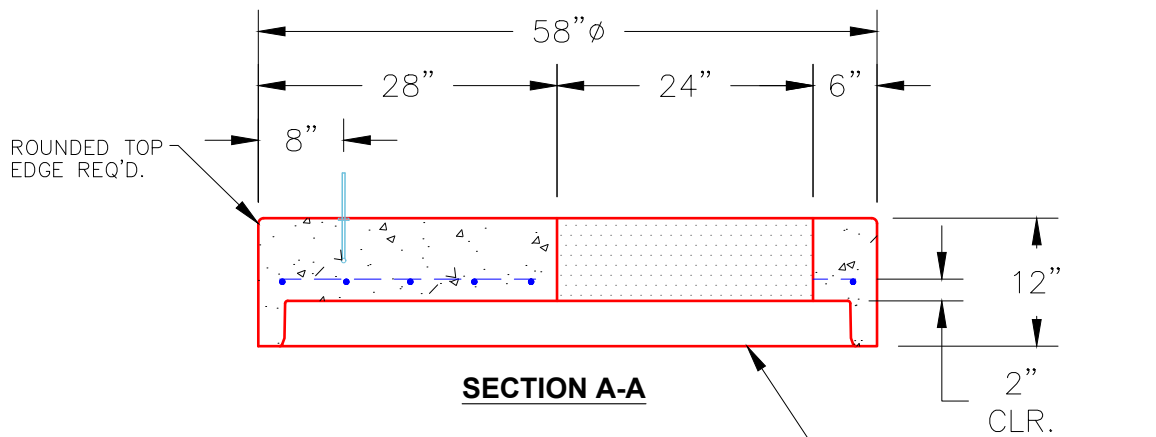
 Structure Total: 5113 lb

Structure Notes:
 1. PER ASTM C478 SPECIFICATIONS.
 2. CONCRETE = 4,000 PSI AT 28 DAYS.
 3. INVERT CHANNEL (BY OTHERS).
 4. CASTING BY ICAST (HOE MC-420 F/C STORM)

REINFORCING PER ASTM A615 (GRADE 60).
 - TOP SLAB (As .62) #5 BARS AT 6" C.C.E.W..
 - RISER/WALLS (As .12)
 - FLOOR (As .31) #5 BARS AT 12" C.C.E.W.



PLAN VIEW



SECTION A-A

NOTES:

- 1. MANUFACTURED TO ASTM C-478 (LATEST REVISION).
- 2. CONCRETE: 4,000 PSI AT 28 DAYS.
- 3. REINFORCING: #5 BAR @ 6" O.C. E.W. (GRADE 60).

STANDARD SINGLE OFFSET GROOVE JOINT REQUIRED

Coating (Int): Coating (Ext):	Seam Up: Flat Seam Dn: Groove	Wall Thickness: 5"	Height (Ext): 12"	Weight (Net): 1561 lb Volume (Net): 0.4cu.yd
----------------------------------	----------------------------------	--------------------	-------------------	---