

Job Name: 26-1337 Legacy Pools
 Job Location: Owensboro, KY
 Contractor: John Maurice

Plant: 100
 3/11/2026 12:05:14 PM

Tech: Jared - A
 PC: Trevor Lewis



Structure ID: 4 ST-JB

P2 MH048LD07ECC

MH FLAT TOP w/ 24" ECC Hole F/F

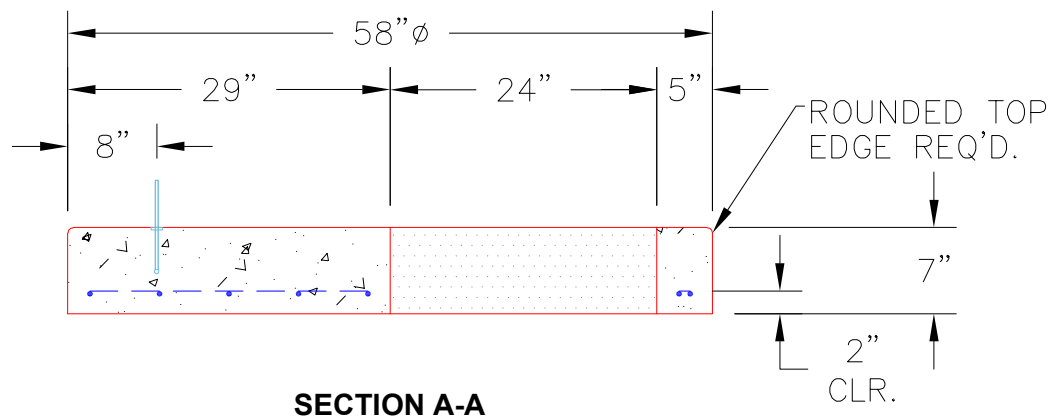
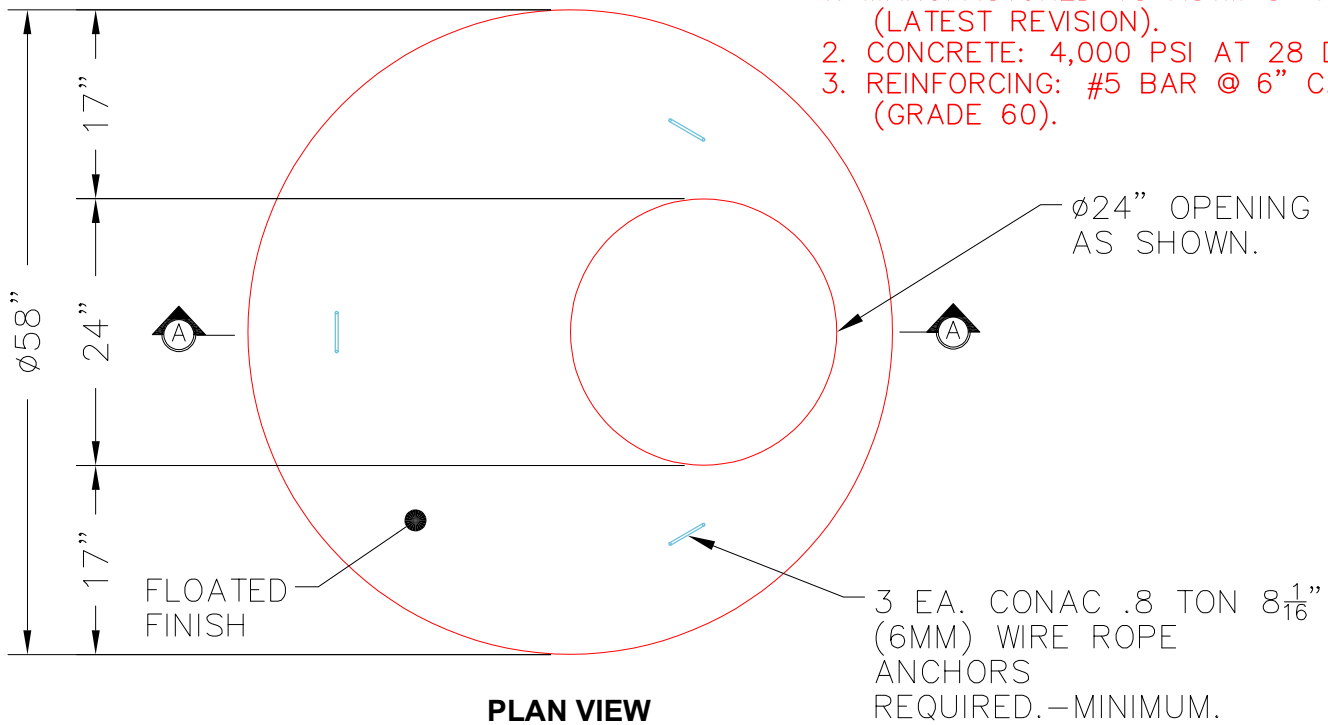
- P3) 24" - CASTING HEIGHT - 7"
- P2) 48" - MH FLAT TOP w/ 24" ECC Hole F/F - 7"
- P1) 48" - MH BASE Custom Ht F/n - 20"
- 1) CASTING - HOE MC-315 F/C Storm
- 1) 48" - Conseal CS-102 1.00"
- 2) Hole - 16
- 1) Hole - 10

	0 lb
	1286 lb
	2523 lb
	258 lb
	0 lb
	0 lb
	0 lb
Structure Total:	4067 lb

- Structure Notes:**
1. HOE MC-315 F/C STORM PROVIDED BY ICAST.
 2. PER ASTM C478 SPECIFICATIONS.
 3. CONCRETE = 4,000 PSI AT 28 DAYS.
 4. REINFORCING PER ASTM A615 (GRADE 60).
 - TOP SLAB (As .62) #5 BARS AT 6" C.C.E.W..
 - RISER/WALLS (As .12)
 - FLOOR (As .31) #5 BARS AT 12" C.C.E.W.

NOTES:

1. MANUFACTURED TO ASTM C-478 (LATEST REVISION).
2. CONCRETE: 4,000 PSI AT 28 DAYS.
3. REINFORCING: #5 BAR @ 6" C.C. E.W. (GRADE 60).



SECTION A-A

Coating (Int):
 Coating (Ext):

Seam Up: Flat
 Seam Dn: Flat

Wall Thickness: 5"

Height (Ext): 7"

Weight (Net): 1286 lb
 Volume (Net): 0.33cu.yd