

Job Name: 26-1326 ADS 15 Meritage Homes
 Job Location: Antioch, TN
 Contractor: ADS Advanced Drainage Systems, Inc.

Plant: Beaver Dam
 2/19/2026 4:16:59 PM

Tech: S. Felletter
 PC: C. Goff



Structure ID: WQU2-3

P5 MH120LD18

MH FLAT LID w/24in CON Hole F/G

- P6) 24" - CASTING HEIGHT - 7"
- P5) 120" - MH FLAT LID w/24in CON Hole F/G - 18"
- P4) 120" - MH RISER T/G - 24"
- P3) 120" - MH RISER Custom Ht T/G - 89"
- P2) 120" - MH RISER T/G - 96"
- P1) 120" - MH BASE T/n - 24"
- 1) ASSEMBLY REQUIRED - BRACKETS
- 1) CASTING - HOE MC-375 F/C Storm
- 4) 120" - Conseal CS-102 1.00" (Double)
- 2) Hole - 34

0 lb
 16678 lb
 9117 lb
 32113 lb
 36468 lb
 25064 lb
 0 lb
 271 lb
 0 lb
 0 lb

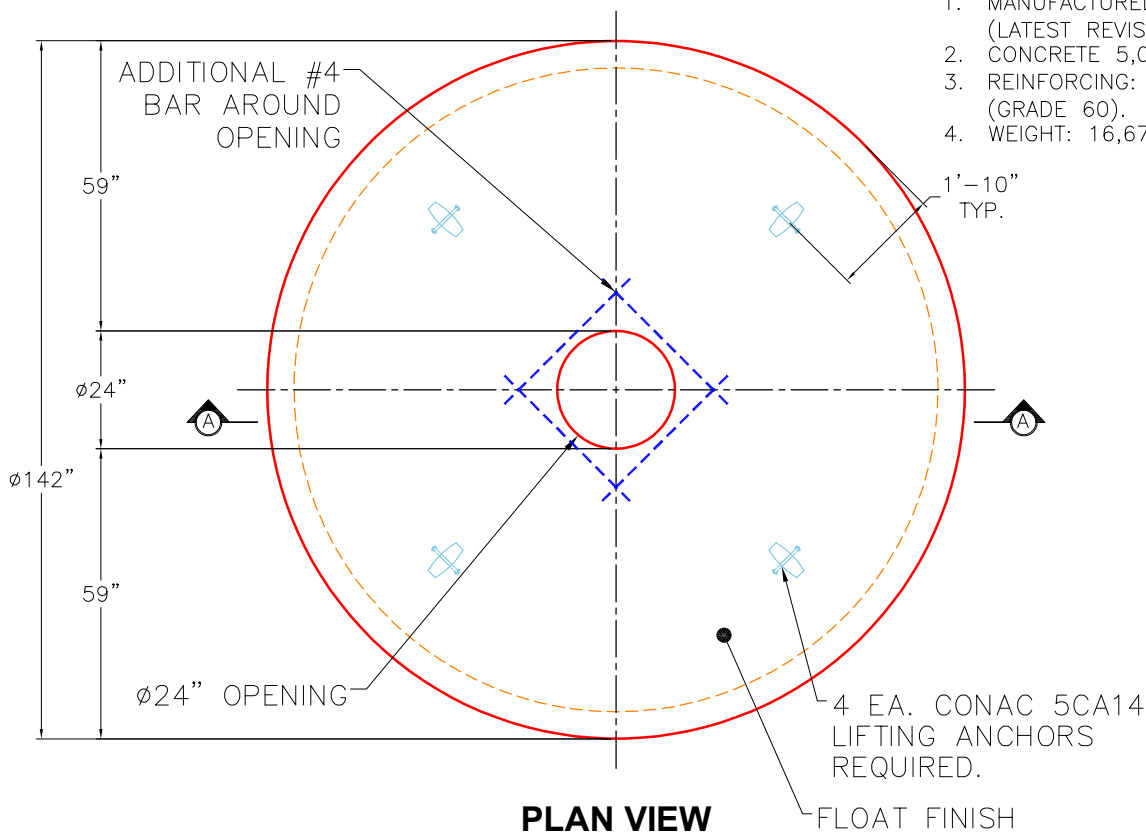
 Structure Total: 119710 lb

- Structure Notes:**
1. PER ASTM C478 SPECIFICATIONS.
 2. CONCRETE = 4,000 PSI AT 28 DAYS.
 3. CASTING BY ICAST (HOE MC-375 F/C "STORM").
 4. LIFTING ANCHORS TO BE INSTALLED ON THE OUTSIDE OF THE STRUCTURE.

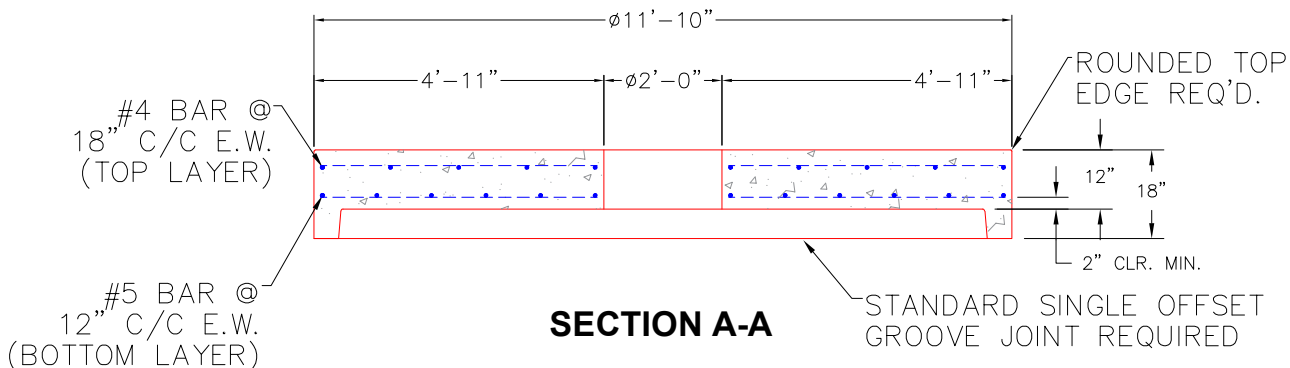
- REINFORCING PER ASTM A615 (GRADE 60).**
- TOP SLAB (As .62) #5 BARS AT 6" C.C.E.W..
 - RISER/WALLS (As .36)
 - FLOOR (As .47) #5 BARS AT 8" C.C.E.W.

GENERAL NOTES:

1. MANUFACTURED TO ASTM C-478 (LATEST REVISION).
2. CONCRETE 5,000 PSI AT 28 DAYS.
3. REINFORCING: #4 & #5 BAR AS SHOWN (GRADE 60).
4. WEIGHT: 16,678 LBS.



PLAN VIEW



SECTION A-A

Coating (Int):
 Coating (Ext):

Seam Up: Flat
 Seam Dn: Groove

Wall Thickness: 11"

Height (Ext): 18"

Weight (Net): 16678 lb
 Volume (Net): 4.26cu.yd