

Job Name: 26-1326 ADS 15 Meritage Homes  
 Job Location: Antioch, TN  
 Contractor: ADS Advanced Drainage Systems, Inc.

Plant: Beaver Dam  
 2/19/2026 4:16:36 PM

Tech: S. Felletter  
 PC: C. Goff



**Structure ID: WQU1-2**

**P1 MH096BA24**

**MH BASE T/n**

- P5) 24" - CASTING HEIGHT - 7"
- P4) 96" - MH FLAT TOP w/ 24" Conc. Hole F/G - 17"
- P3) 96" - MH RISER T/G - 96"
- P2) 96" - MH RISER T/G - 90"
- P1) 96" - MH BASE T/n - 24"
- 1) ASSEMBLY REQUIRED - BRACKETS
- 1) CASTING - HOE MC-375 F/C Storm
- 3) 96" - Conseal CS-102 1.00" (Double)
- 2) Hole - 34

0 lb  
 10473 lb  
 22518 lb  
 22421 lb  
 12831 lb  
 0 lb  
 271 lb  
 0 lb  
 0 lb  
 0 lb  
 Structure Total: 68513 lb

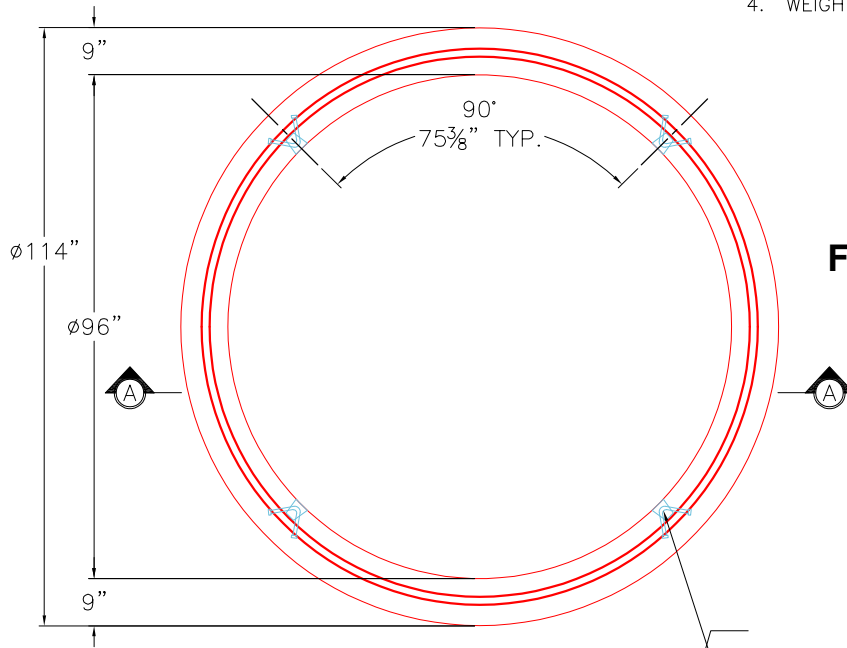
- Structure Notes:
1. PER ASTM C478 SPECIFICATIONS.
  2. CONCRETE = 4,000 PSI AT 28 DAYS.
  3. CASTING BY ICAST (HOE MC-375 F/C "STORM").
  4. LIFTING ANCHORS TO BE INSTALLED ON THE OUTSIDE OF THE STRUCTURE.

- REINFORCING PER ASTM A615 (GRADE 60).
- TOP SLAB (As .62) #5 BARS AT 6" C.C.E.W.
  - RISER/WALLS (As .24)
  - FLOOR (As .47) #5 BARS AT 8" C.C.E.W.

Rim: 615.31' Rim to Invert: 8.56' Slack: 0.72" Sump: 132" Step Position:

GENERAL NOTES:

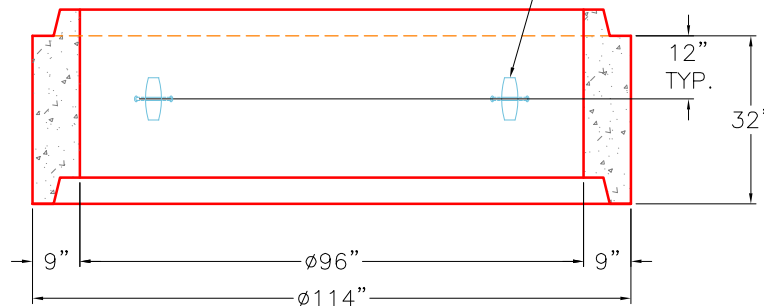
1. MANUFACTURED TO ASTM C-478 (LATEST REVISION).
2. CONCRETE 5,000 PSI AT 28 DAYS.
3. REINFORCING: WALLS - WWF AREA 0.24  
 FLOOR - AREA 0.27 - #5 BAR @ 12" C/C TOP AND BOTTOM MAT.
4. WEIGHT: TOTAL - 12,831 LBS.  
 FIRST POUR - 7,972 LBS  
 SECOND POUR - 4,859 LBS



**FIRST POUR DRAWING**

**TOP VIEW**

4 EA. CONAC 6CA14 ANCHORS REQUIRED FOR HANDLING.



**SECTION A-A**

Coating (Int):  
 Coating (Ext):

Seam Up: Tongue  
 Seam Dn: n/a

Wall Thickness: 9"  
 Floor Height: 8"

Height (Int): 24"  
 Height (Ext): 32"

Weight (Net): 12831 lb  
 Volume (Net): 3.28cu.yd

Job Name: 26-1326 ADS 15 Meritage Homes  
 Job Location: Antioch, TN  
 Contractor: ADS Advanced Drainage Systems, Inc.

Plant: Beaver Dam  
 2/19/2026 4:16:36 PM

Tech: S. Felletter  
 PC: C. Goff



**Structure ID: WQU1-2**

**P1 MH096BA24**

**MH BASE T/n**

- P5) 24" - CASTING HEIGHT - 7"
- P4) 96" - MH FLAT TOP w/ 24" Conc. Hole F/G - 17"
- P3) 96" - MH RISER T/G - 96"
- P2) 96" - MH RISER T/G - 90"
- P1) 96" - MH BASE T/n - 24"
- 1) ASSEMBLY REQUIRED - BRACKETS
- 1) CASTING - HOE MC-375 F/C Storm
- 3) 96" - Conseal CS-102 1.00" (Double)
- 2) Hole - 34

0 lb  
 10473 lb  
 22518 lb  
 22421 lb  
 12831 lb  
 0 lb  
 271 lb  
 0 lb  
 0 lb  
 0 lb  
 -----  
 Structure Total: 68513 lb

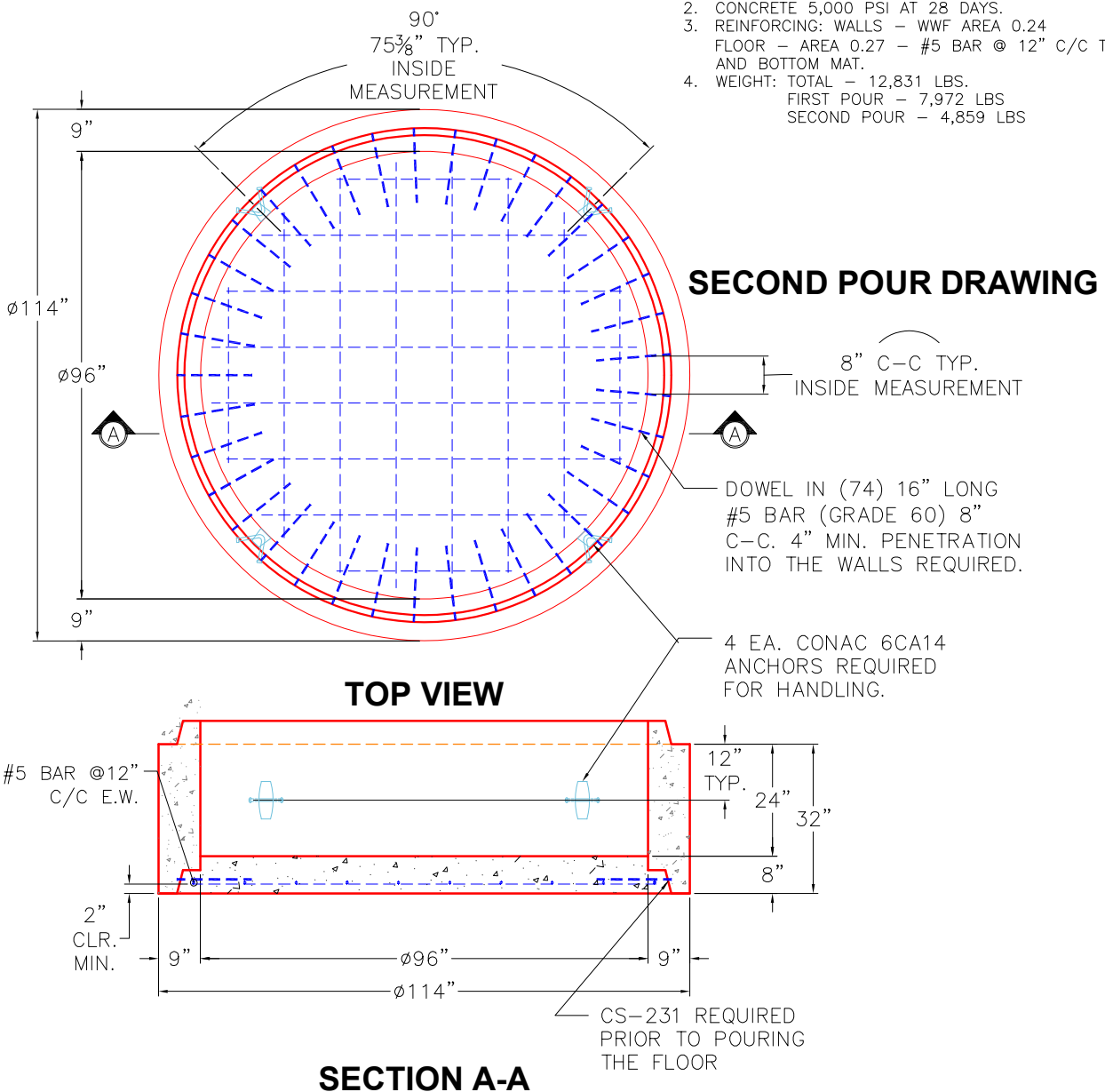
- Structure Notes:**
1. PER ASTM C478 SPECIFICATIONS.
  2. CONCRETE = 4,000 PSI AT 28 DAYS.
  3. CASTING BY ICAST (HOE MC-375 F/C "STORM").
  4. LIFTING ANCHORS TO BE INSTALLED ON THE OUTSIDE OF THE STRUCTURE.

- REINFORCING PER ASTM A615 (GRADE 60).
- TOP SLAB (As .62) #5 BARS AT 6" C.C.E.W.
  - RISER/WALLS (As .24)
  - FLOOR (As .47) #5 BARS AT 8" C.C.E.W.

Rim: 615.31' Rim to Invert: 8.56' Slack: 0.72' Sump: 132' Step Position:

**GENERAL NOTES:**

1. MANUFACTURED TO ASTM C-478 (LATEST REVISION).
2. CONCRETE 5,000 PSI AT 28 DAYS.
3. REINFORCING: WALLS - WWF AREA 0.24  
 FLOOR - AREA 0.27 - #5 BAR @ 12" C/C TOP AND BOTTOM MAT.
4. WEIGHT: TOTAL - 12,831 LBS.  
 FIRST POUR - 7,972 LBS  
 SECOND POUR - 4,859 LBS



**SECOND POUR DRAWING**

- 8" C-C TYP. INSIDE MEASUREMENT
- DOWEL IN (74) 16" LONG #5 BAR (GRADE 60) 8" C-C. 4" MIN. PENETRATION INTO THE WALLS REQUIRED.
- 4 EA. CONAC 6CA14 ANCHORS REQUIRED FOR HANDLING.

Coating (Int):  
 Coating (Ext):

Seam Up: Tongue  
 Seam Dn: n/a

Wall Thickness: 9"  
 Floor Height: 8"

Height (Int): 24"  
 Height (Ext): 32"

Weight (Net): 12831 lb  
 Volume (Net): 3.28cu.yd