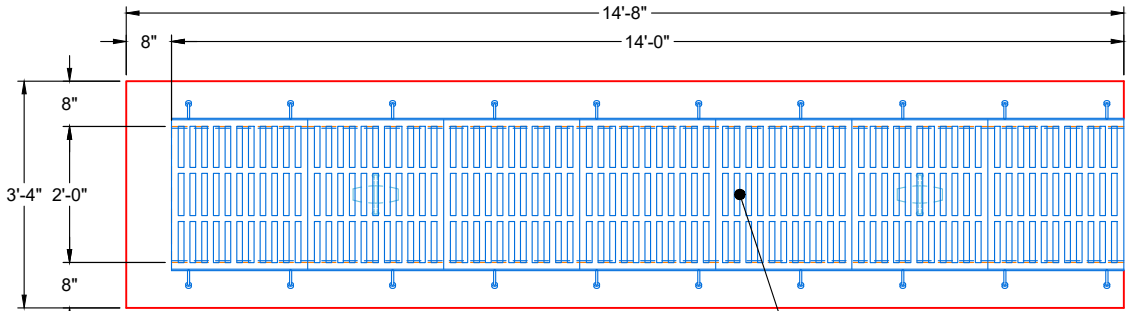


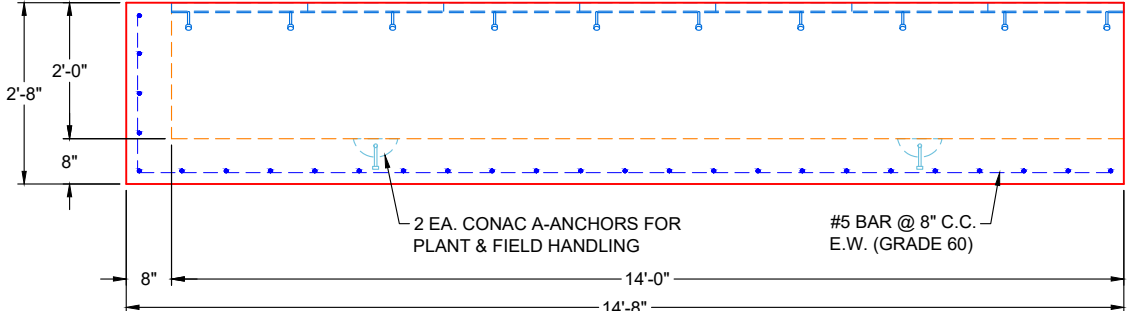
GENERAL NOTES:

1. MANUFACTURED TO ASTM C-913 (LATEST REVISION)
2. CONCRETE: 4,500 PSI AT 28 DAYS
3. REINFORCEMENT: #5 BAR @ 8" C.C. E.W. (GRADE 60)
4. WEIGHT: 11,925 LBS
5. CONTRACTOR TO VERIFY ALL DIMENSIONS BEFORE MANUFACTURE
6. JR HOE 26" TYPE A BOLT-DOWN TRENCH GRATES & FABRICATED STEEL FRAMES W/ NELSON STUDS SUPPLIED BY ICAST
7. FABRICATED STEEL FRAMES W/ NELSON STUDS TO BE CAST INTO TOP OF WALLS
8. FLOOR SLOPE TO BE PERFORMED IN FIELD BY OTHERS

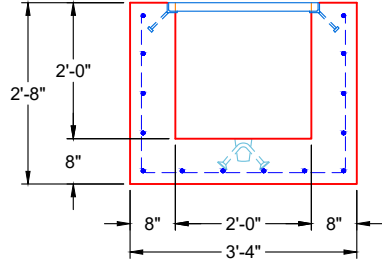


PLAN VIEW

JR HOE 26" TYPE A BOLT-DOWN TRENCH GRATES & FABRICATED STEEL FRAMES W/ NELSON STUDS SUPPLIED BY ICAST - FRAMES TO BE CAST INTO TOP OF WALLS



FRONT VIEW



SIDE VIEW

REVISION INFORMATION	
REV. Δ DATE:	NO REVISIONS TO DATE



SUBMITTAL DRAWING: 2'-0" X 2'-0" X 14'-0" TRENCH DRAIN (3-SIDED BOX)		
CUSTOMER: MARTIN MARIETTA		
PROJECT: HARTFORD SUMP AND SLOT DRAIN		
STRUCTURE: 3		
QUOTE/SALES ORDER NO: 26-1324		
CHECKED BY: B. SMITH	DRAWN BY: FORMONIC	
DATE: 03/04/26	SCALE: NTS	PG. 1 OF 1