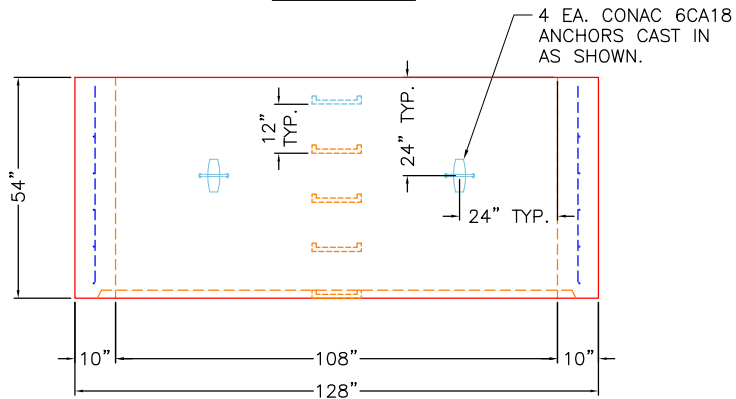
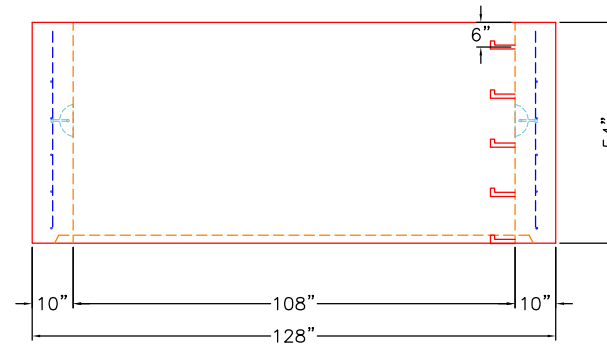


**PLAN VIEW**



**FRONT VIEW**



**RIGHT VIEW**

**GENERAL NOTES:**

1. MANUFACTURED TO ASTM C-913 (LATEST REVISION).
2. CONCRETE: 5,000 PSI AT 28 DAYS.
3. REINFORCING: PER ASTM A615 (GRADE 60).  
 BASE - #5 @ 12" O.C.  
 WALL - #5 @ 8" O.C. E.W.  
 TOP - #4 @ 12" O.C. E.W. TOP & BOTTOM
4. WEIGHT: 22,381 LBS

**PRODUCTION WORK ORDER**

PRODUCT I.D.: BX108108-10RVF

DESCRIPTION: 108" X 108" X 54.5" TALL VAULT RISER



**QUALITY CONTROL CHECKLIST**

- ALL DIMENSIONS CORRECT.
- LIFTERS INSTALLED.
- OPENINGS CORRECT LOCATION.
- REINFORCING CORRECT.
- SURFACE QUALITY ACCEPTABLE.
- EDGES CHAMFERED.
- ALL PATCHWORK ACCEPTABLE.

PRODUCT VIEW: RIGHT SIDE UP

CUSTOMER: CORE AND MAIN

PLANT: BEAVER DAM, KY.

PROJECT: MVUD METER VAULT

WEIGHT: 25,251 LBS.

STRUCTURE: VAULT

TOP SECTION JOINT: N/A

ORDER NO: 26-1321

BASE SECTION JOINT: GROOVE

PC: T. LEWIS

DRAWING: S. FELLETER

QC CHECK INITIALS:

DATE: 3/10/26

SCALE: NTS

PG. 1 of 1