

Job Name: 26-1319 822587 Caldwell Energy Building
 Job Location: Shelbyville, KY
 Contractor: Contech Engineering Solutions

Plant: Beaver Dam
 2/12/2026 1:04:51 PM

Tech: S. Felletter
 PC: T. Sekula



Structure ID: 10-CS-3

P3 MH036LD10S

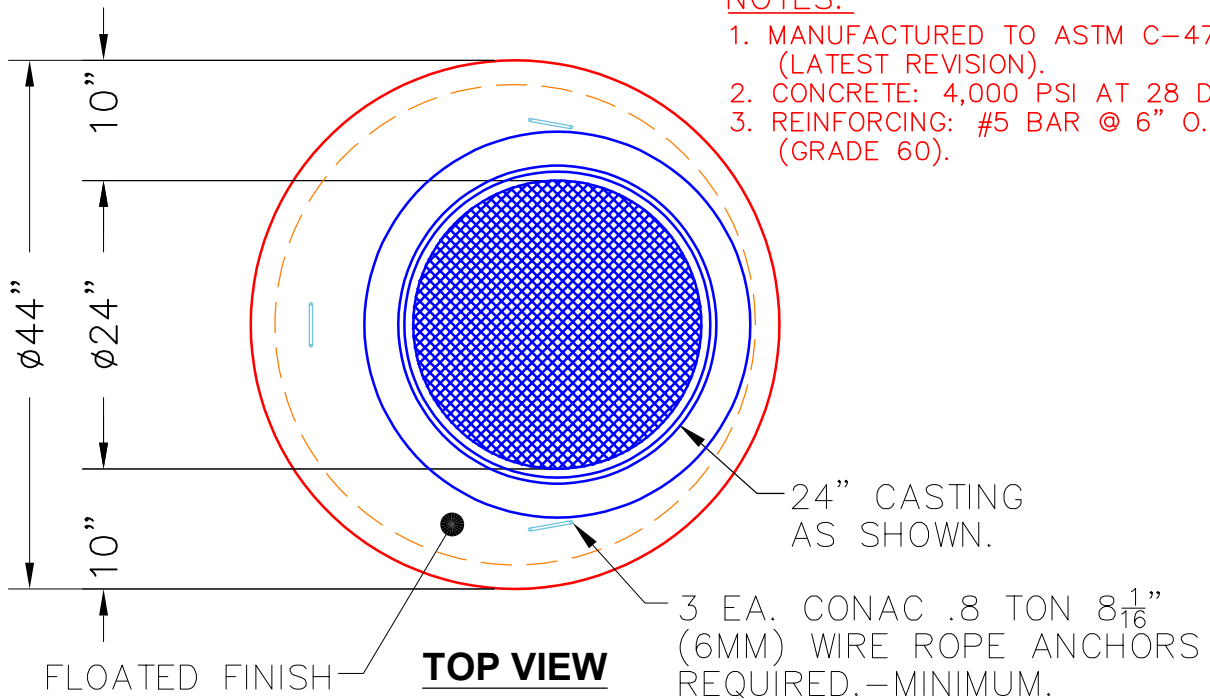
MH FLAT TOP SPECIAL (FRAME CAST IN) F/G

- P4) 24" - CASTING HEIGHT - 0"
- P3) 36" - MH FLAT TOP SPECIAL (FRAME CAST IN) F/G - 10"
- P2) 36" - MH RISER T/G - 42"
- P1) 36" - MH BASE T/h - 12"
- 1) CVSTENCILING
- 1) ASSEMBLY REQUIRED
- 1) This Structure Includes a Cast-in Item
- 2) 36" - Conseal CS-102 1.00"
- 2) Hole - 16

0 lb
 896 lb
 1628 lb
 1272 lb
 0 lb
 0 lb
 0 lb
 0 lb
 0 lb
 0 lb

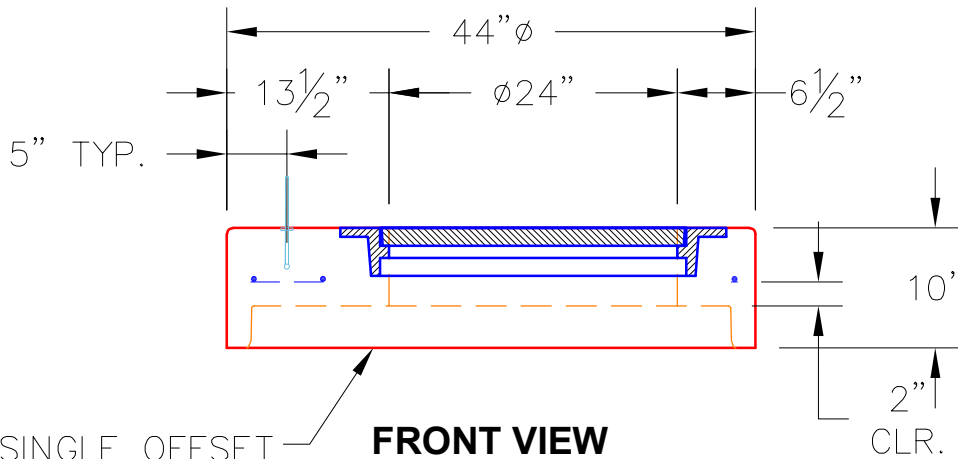
 Structure Total: 3796 lb

Structure Notes:
 CASTING FRAME TO BE CAST INTO TOP SLAB
 LIFTING ANCHORS TO BE INSTALLED
 ON THE OUTSIDE OF THE STRUCTURE
 ICAST TO INSTALL THE INTERNALS
 CONTECH'S LOGO AS WELL AS THE
 INLET AND OUTLET MUST BE
 STENCILED ONTO THE STRUCTURE



NOTES:

1. MANUFACTURED TO ASTM C-478 (LATEST REVISION).
2. CONCRETE: 4,000 PSI AT 28 DAYS.
3. REINFORCING: #5 BAR @ 6" O.C. E.W. (GRADE 60).



Coating (Int):
 Coating (Ext):

Seam Up: Flat
 Seam Dn: Groove

Wall Thickness: 4"

Height (Ext): 10"

Weight (Net): 896 lb
 Volume (Net): 0.23cu.yd