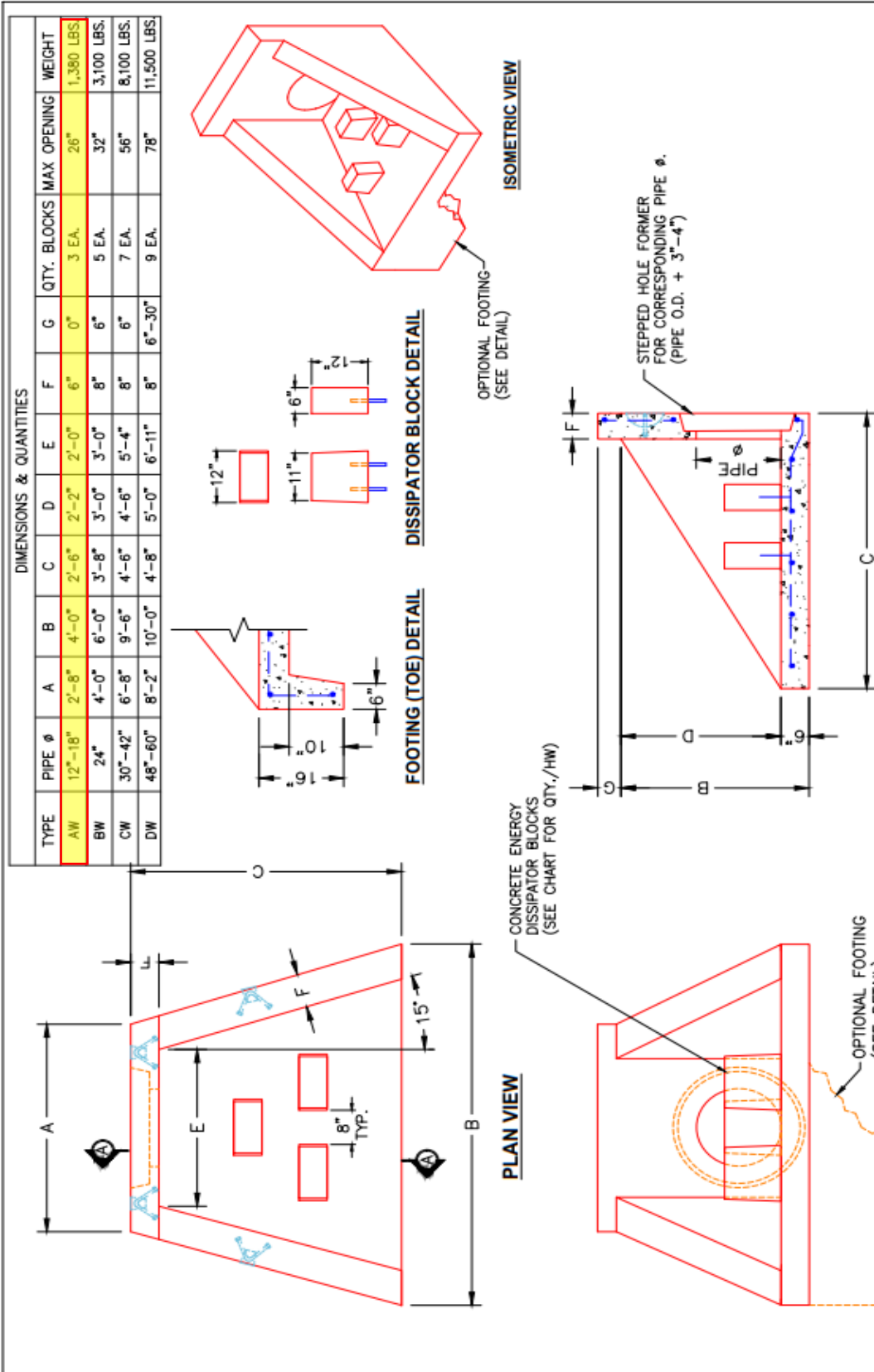




**Structure ID: G3-14 HW**

**P1 HAWW18FD**

**18" - HW AW w/FLAT BTM/DISSIPATORS F/F**



**SECTION A-A**

**FRONT ELEVATION**

**NOTES:**

1. CONCRETE: 4500 PSI AT 28 DAYS MINIMUM COMPRESSIVE STRENGTH.
2. REINFORCING: #4 BAR @ 12" C/C E.W.-GRADE 60, (WITH 2" CONCRETE COVER MINIMUM)
3. REINFORCING BARS TO BE TACK WELDED OR TIED.
4. PIPE AND LIFTING ANCHOR POCKETS TO BE GROUTED WITH NON-SHRINK GROUT AFTER SETTING.
5. PREFORMED STEPPED HOLE SIZED AS PER O.D. OF PIPE + 3"-4".
6. OPTIONAL FOOTING (TOE) AVAILABLE FOR ALL SIZES.
7. DISSIPATOR BLOCKS INSTALLED POST POUR OF HEADWALL WITH 2 EA. #5 REBAR DOWELS.



**INFRASTRUCTURE PRECAST, INC.**  
 981 WEST 7TH ST., BEAVER DAM, KY. 42320  
 PHONE: (270) 363-2238, FAX: (270) 298-7424

PRECAST WINGED HEADWALL  
 WITH ENERGY DISSIPATORS

DRAWING NO.: NMETRO SF-HW DATE: 09-24-21  
 REVIEWED BY: J.H. ROSS, PE DRAWN BY: N. RICHARDS  
 WEB: WWW.IPCASTING.COM SCALE: NTS