

Job Name: 26-1318 - Red River Ridge
 Job Location: Clarksville, TN 37040
 Contractor: Byard Construction, LLC

Plant: 100
 4/13/2026 1:40:32 PM

Tech: Jared - F
 PC: A. Chambers

Structure ID: F10-11 ST-DCI

P2 BX036064-08LD06SP

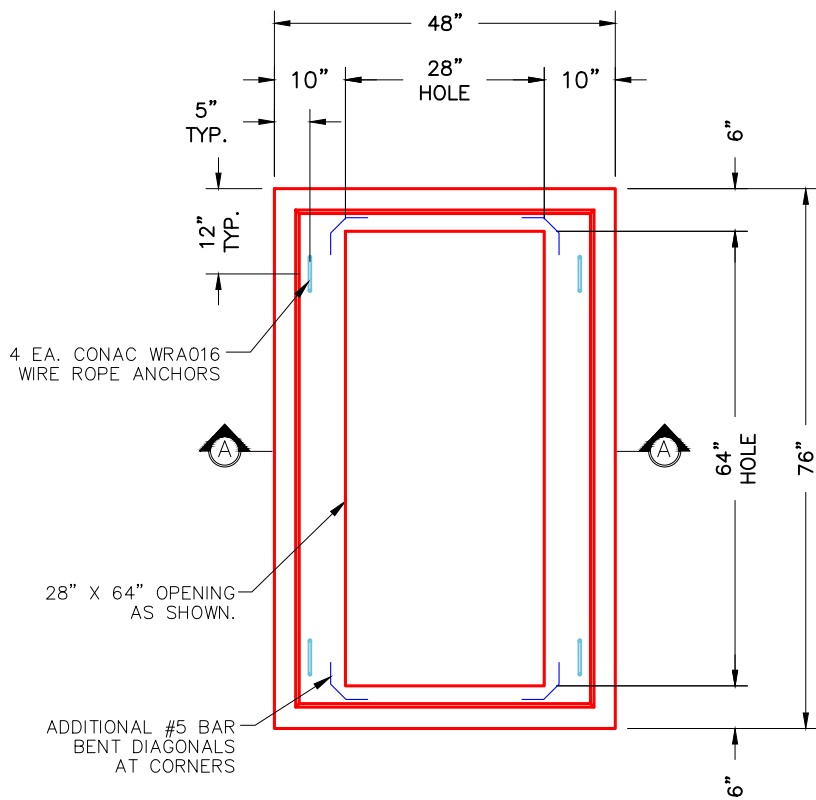
BX FLAT LID 6inW w/28"x64" HOLE F/F

- P3) 28" x 64" - CASTING HEIGHT - 6.50"
- P2) 36" x 64" - BX FLAT LID 6inW w/28"x64" HOLE F/F - 8"
- P1) 36" x 64" - BOX BASE 6inW, 6inF, Variable Ht F/n - 59"
- 2) CASTING - JBS 3080 SET (F/G/H)
- 1) 28" x 64" - Conseal CS-102 1.00"
- 1) Hole - 34
- 1) Hole - 18
- 1) Hole - 28

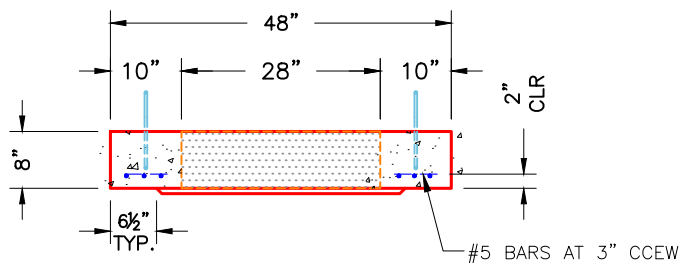
0 lb
 1246 lb
 7595 lb
 1000 lb
 0 lb
 0 lb
 0 lb
 0 lb
 0 lb
 Structure Total: 9841 lb

Structure Notes:
 1. PER ASTM C913 SPECIFICATIONS.
 2. CONCRETE = 4,000 PSI AT 28 DAYS.
 3. NO STEPS AND NO INVERT CHANNEL.
 4. CASTING BY ICAST (JBS 3080 DOUBLE SET (F/G/H)).

REINFORCING PER ASTM A615 (GRADE 60).
 - TOP SLAB (As .62) #5 BARS AT 3" C.C.E.W.
 - WALLS (As .31) #5 BARS AT 12" C.C.E.W.
 - FLOOR (As .31) #5 BARS AT 12" C.C.E.W.



PLAN VIEW



SECTION A-A

NOTES:

- 1. MANUFACTURED TO ASTM C-913 (LATEST REVISION).
- 2. CONCRETE: 4,000 PSI AT 28 DAYS.
- 3. REINFORCING: #5 BAR @ 3" O.C. E.W. (GRADE 60).

Coating (Int):
 Coating (Ext):

Seam Up: Flat
 Seam Dn: Flat

Wall Thickness: 6"

Height (Ext): 8"

Weight (Net): 1246 lb
 Volume (Net): 0.32cu.yd