

Job Name: 26-1315 - Ruby Drive Extension
Job Location: Madisonville, KY
Contractor: Steve Pleasant Excavating

PC: E. Bradley
 TECH: J. Horsley
 Plant: 100



Structure ID: **D-4 CBI A**

Spec: KYTC
 Type: CBI TYPE A (10')
 Size: 24" x 36"

Rim: 454.07'
 Invert: 449.98'
 Rim to Invert: 4.09'

Sump: 0"
 Floor (Top): 449.98'
 Floor Height: 8"

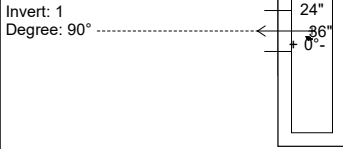
Floor (Bot): 449.313'
 Overall Height: 4.75'
 Slack: 0.08"

Structure Notes:

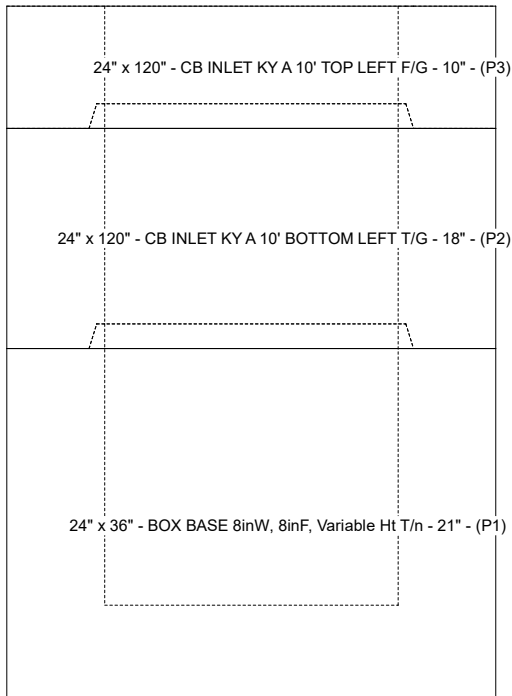
- PER KYTC CBI TYPE A / ASTM C-913 SPECS
- CONCRETE: 4,000 PSI AT 28 DAYS
- REINFORCEMENT:
 - TOP PHASE TOP: #5 BAR @ 6" C.C. E.W. (GRADE 60)
 - TOP PHASE BOTTOM: #5 BAR @ 12" C.C. E.W. (GRADE 60)
 - PIPE CHAMBER: #5 BAR @ 12" C.C. E.W. (GRADE 60)
- NO STORM INVERT
- NO STEPS
- HOE KY-206 FRAME & COVER "STORM" SUPPLIED BY ICAST - FRAME TO BE CAST INTO TOP PHASE TOP FLANGE SIDE UP

STRUCTURE SUMMARY:

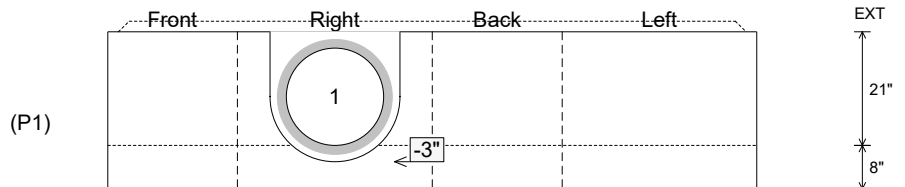
P3) 24" x 120" - CB INLET KY A 10' TOP LEFT F/G - 10"	3400 lb
P2) 24" x 120" - CB INLET KY A 10' BOTTOM LEFT T/G - 18"	5270 lb
P1) 24" x 36" - BOX BASE 8inW, 8inF, Variable Ht T/n - 21"	3194 lb
1) CASTING - HOE KY-206 F/C (KY CBI A)	206 lb
1) This Structure Includes a Cast-in Item - KY-206 Frame Flange Side Up	0 lb
1) 24" x 36" - Conseal CS-102 1.00"	0 lb
1) DOGHOUSE INVRTD - 24"x24"	0 lb
Structure Total:	12069 lb



Position	Elev	Angle	Pipe	Pipe OD	Hole	Connector	Up ()	Ref
Rim	454.07'							
Reducer								
Invert 1	449.98'	90°	18" HDPE	21.2"	24" x 24"	DOGHOUSE INVRTD 24"x24"	-3"	P1
Invert 2								
Invert 3								
Invert 4								
Invert 5								
Invert 6								
Invert 7								
Invert 8								



Cast (Int. Dim.) - Interior Dimensions



Submittal Drawing
 3/31/2026 8:28:57 AM

SUBMITTAL
 APPROVED BY: