

Job Name: 26-1315 - Ruby Drive Extension  
 Job Location: Madisonville, KY  
 Contractor: Steve Pleasant Excavating

Plant: 100  
 3/31/2026 10:53:14 AM

Tech: J. Horsley  
 PC: E. Bradley



**Structure ID: C-3 CBIA**

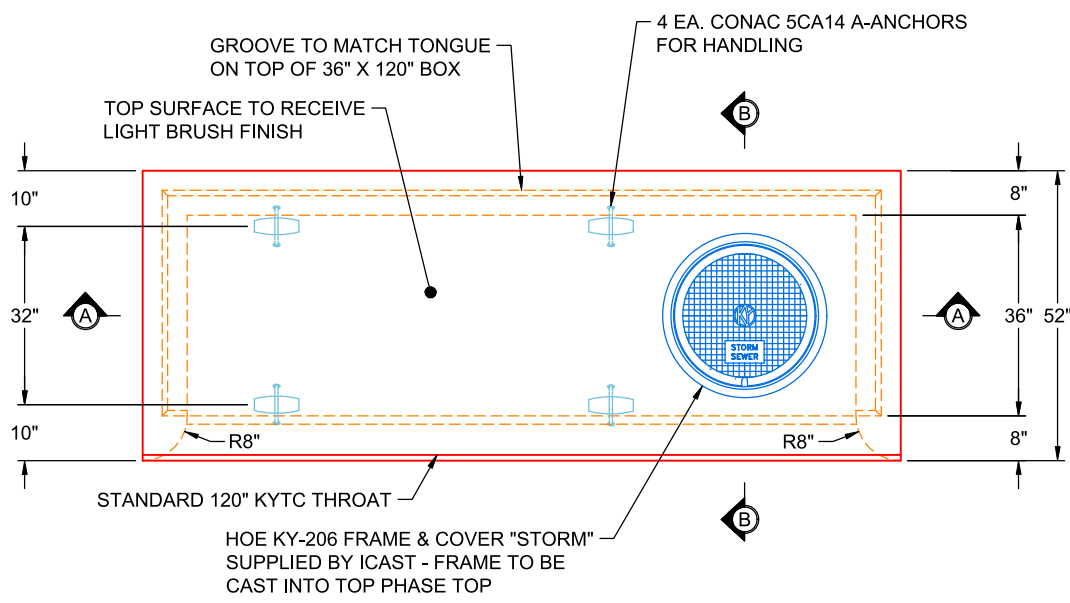
**P2 CBITA10-TR-MOD 36x120**

**CB INLET KY A 10' TOP RIGHT F/G**

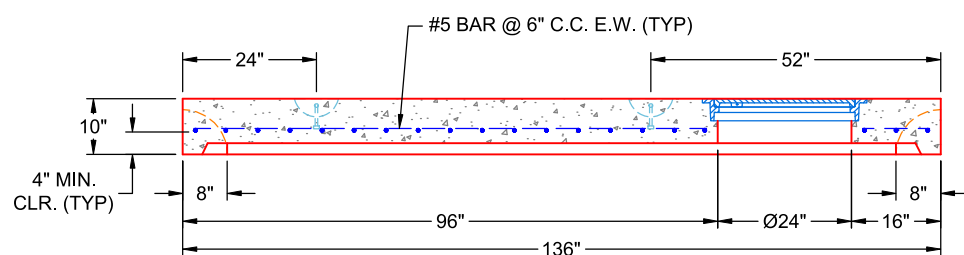
- P2) 36" x 120" - CB INLET KY A 10' TOP RIGHT F/G - 10"
- P1) 36" x 120" - BOX BASE 8inW, 8inF, Variable Ht T/n - 45"
- 1) CASTING - HOE KY-206 F/C (KY CBI A)
- 1) This Structure Includes a Cast-in Item - KY-206 Frame Flange Side Up
- 1) SECONDARY POUR
- 1) Hole - 30
- 1) Hole - 24
- 1) Horiz Slot n/n - 120"x8"

	4866 lb
	13878 lb
	206 lb
	0 lb
	0 lb
	0 lb
	0 lb
	0 lb
Structure Total:	18950 lb

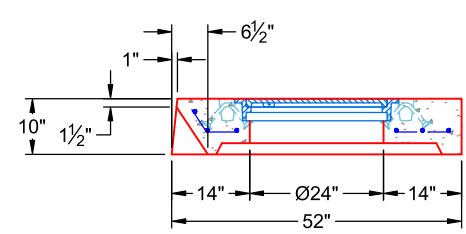
- Structure Notes:**
1. PER KYTC CBI TYPE A (MODIFIED) / ASTM C-913 SPECS
  2. CONCRETE: 4,000 PSI AT 28 DAYS
  3. REINFORCEMENT: #5 BAR @ 6" C.C. E.W. (GRADE 60) - 2" MIN. REBAR CLEARANCE (TYP)
  4. HOE KY-206 FRAME & COVER "STORM" SUPPLIED BY ICAST - FRAME TO BE CAST INTO TOP PHASE TOP FLANGE SIDE UP
  5. LIFTERS: 4 EA. 5CA14 CONAC A-ANCHORS FOR PLANT & FIELD HANDLING
  6. TOP SURFACE TO RECEIVE LIGHT BRUSH FINISH



**PLAN VIEW  
(RIGHT SIDE UP)**



**SECTION A-A  
(RIGHT SIDE UP)**



**SECTION B-B  
(RIGHT SIDE UP)**

Coating (Int): Coating (Ext):	Seam Up: Flat Seam Dn: Groove	Wall Thickness: 8"	Height (Ext): 10"	Weight (Net): 4866 lb Volume (Net): 1.24cu.yd
----------------------------------	----------------------------------	--------------------	-------------------	--