

Job Name: 26-1315 - Ruby Drive Extension
 Job Location: Madisonville, KY
 Contractor: Steve Pleasant Excavating

Plant: 100

Tech: J. Horsley

3/31/2026 9:20:24 AM

PC: E. Bradley



Structure ID: C-3 CBIA

P1 BX36120-08VF

BOX BASE 8inW, 8inF, Variable Ht T/n

- P2) 36" x 120" - CB INLET KY A 10' TOP RIGHT F/G - 10"
- P1) 36" x 120" - BOX BASE 8inW, 8inF, Variable Ht T/n - 45"
- 1) CASTING - HOE KY-206 F/C (KY CBIA)
- 1) This Structure Includes a Cast-in Item - KY-206 Frame Flange Side Up
- 1) SECONDARY POUR
- 1) Hole - 30
- 1) Hole - 24
- 1) Horiz Slot n/n - 120"x8"

4866 lb
 13878 lb
 206 lb
 0 lb
 0 lb
 0 lb
 0 lb
 0 lb

 Structure Total: 18950 lb

- Structure Notes:**
1. PER KYTC CBI TYPE A (MODIFIED) / ASTM C-913 SPECS
 2. CONCRETE: 4,000 PSI AT 28 DAYS
 3. REINFORCEMENT: #5 BAR @ 12" C.C. E.W. (GRADE 60) - 2" MIN. REBAR CLEARANCE (TYP)
 4. NO STORM INVERT
 5. NO STEPS
 6. HOE KY-206 FRAME & COVER "STORM" SUPPLIED BY ICAST - FRAME TO BE CAST INTO TOP PHASE TOP FLANGE SIDE UP
 7. WET STICK 18" X 24" #5 L-BARS @ 12" C.C. E.W. (GRADE 60) OUT OF FLOOR FOR WALL POUR TIE-IN (SEE L-BAR DETAIL)

FIRST POUR (FLOOR): 4,747 LBS

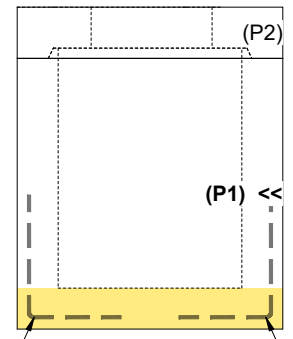
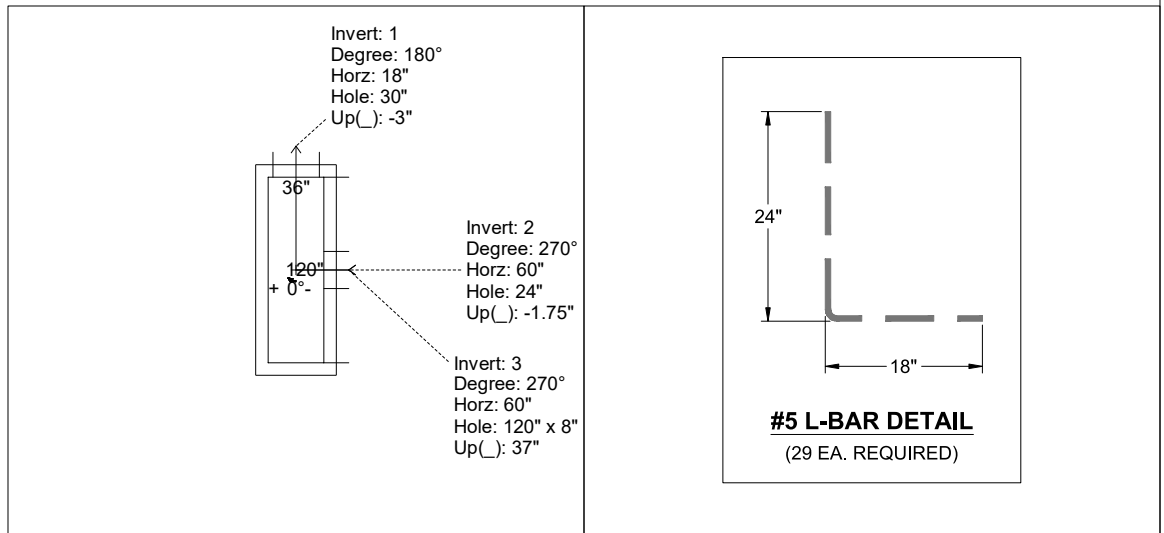
SECOND POUR (WALLS): 9,131 LBS

Rim: 454.07' Rim to Invert: 4.59' Slack: 0.08" Sump: 0" Step Position:

Position	Elev	Angle	Ext. (cw)	Pipe	Pipe OD	Connector	Hole	Horz Size	Up (↓)	Offset
Invert 1	449.48'	180°	26"	24" HDPE	27.8"	Hole 30	30"	30"	-3"	0"
Invert 2	449.58'	270°	68"	18" HDPE	21.2"	Hole 24	24"	24"	-1.75"	0"
Invert 3	452.56'	270°	68"	120" x 8" Horiz Slot	120" x 8"	Horiz Slot 120"x8"	120" x 8"	120"	37"	0"
Invert 4										
Invert 5										
Invert 6										
Invert 7										
Invert 8										

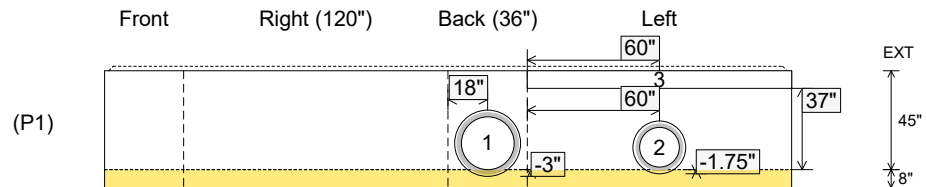
RIGHT-SIDE UP VIEW (int. dimensions)

UPSIDE-DOWN VIEW (int. dimensions)



WET STICK 18" X 24" #5 L-BARS @ 12" C.C. E.W. (GRADE 60) OUT OF FLOOR FOR WALL POUR TIE-IN (SEE L-BAR DETAIL)

INSIDE WALL DIMENSIONS



Coating (Int):
Coating (Ext):

Seam Up: Tongue
Seam Dn: n/a

Wall Thickness: 8"
Floor Height: 8"

Height (Int): 45"
Height (Ext): 53"

Weight (Net): 13878 lb
Volume (Net): 3.54cu.yd

Job Name: 26-1315 - Ruby Drive Extension
 Job Location: Madisonville, KY
 Contractor: Steve Pleasant Excavating

Plant: 100
 3/31/2026 9:20:24 AM

Tech: J. Horsley
 PC: E. Bradley



Structure ID: C-3 CBIA

P1 BX36120-08VF

BOX BASE 8inW, 8inF, Variable Ht T/n

- P2) 36" x 120" - CB INLET KY A 10' TOP RIGHT F/G - 10"
- P1) 36" x 120" - BOX BASE 8inW, 8inF, Variable Ht T/n - 45"
- 1) CASTING - HOE KY-206 F/C (KY CBI A)
- 1) This Structure Includes a Cast-in Item - KY-206 Frame Flange Side Up
- 1) SECONDARY POUR
- 1) Hole - 30
- 1) Hole - 24
- 1) Horiz Slot n/n - 120"x8"

4866 lb
 13878 lb
 206 lb
 0 lb
 0 lb
 0 lb
 0 lb
 0 lb
 Structure Total: 18950 lb

- Structure Notes:**
1. PER KYTC CBI TYPE A (MODIFIED) / ASTM C-913 SPECS
 2. CONCRETE: 4,000 PSI AT 28 DAYS
 3. REINFORCEMENT: #5 BAR @ 12" C.C. E.W. (GRADE 60) - 2" MIN. REBAR CLEARANCE (TYP)
 4. NO STORM INVERT
 5. NO STEPS
 6. HOE KY-206 FRAME & COVER "STORM" SUPPLIED BY ICAST - FRAME TO BE CAST INTO TOP PHASE TOP FLANGE SIDE UP
 7. WET STICK / STUB #5 BAR @ 12" C.C. E.W. (GRADE 60) OUT OF HORIZONTAL SLOT / THROAT FOR FIELD POUR TIE-IN (SEE REBAR STUB DETAIL)
 8. LIFTERS: 4 EA. 5CA18 CONAC A-ANCHORS FOR PLANT & FIELD HANDLING - INSTALLED IN 0° & 180° WALLS, MIN. 10" FROM TOP OF WALLS

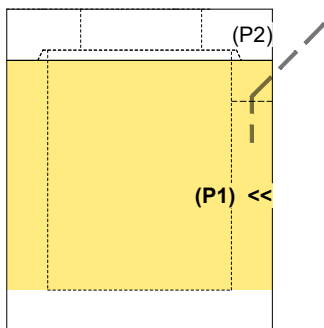
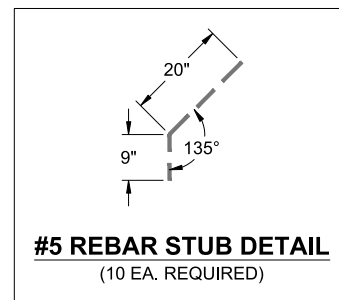
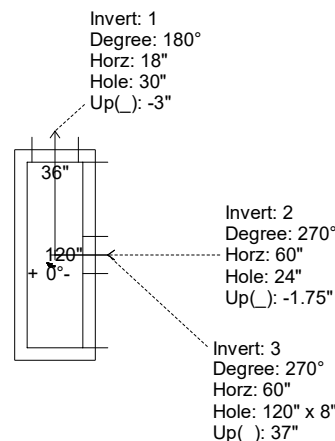
FIRST POUR (FLOOR): 4,747 LBS
SECOND POUR (WALLS): 9,131 LBS

Rim: 454.07' Rim to Invert: 4.59' Slack: 0.08" Sump: 0" Step Position:

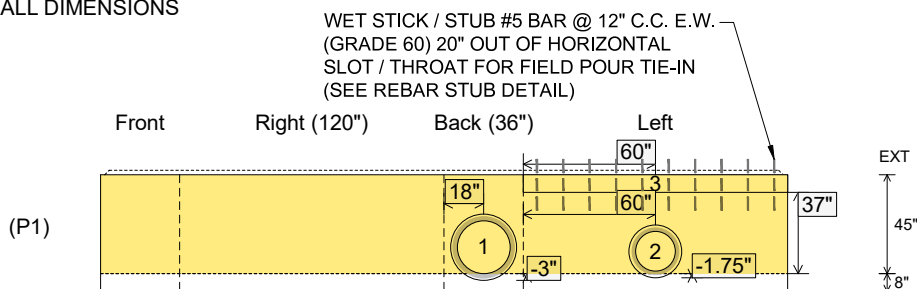
Position	Elev	Angle	Ext. (cw)	Pipe	Pipe OD	Connector	Hole	Horz Size	Up (↓)	Offset
Invert 1	449.48'	180°	26"	24" HDPE	27.8"	Hole 30	30"	30"	-3"	0"
Invert 2	449.58'	270°	68"	18" HDPE	21.2"	Hole 24	24"	24"	-1.75"	0"
Invert 3	452.56'	270°	68"	120" x 8" Horiz Slot	120" x 8"	Horiz Slot 120"x8"	120" x 8"	120"	37"	0"
Invert 4										
Invert 5										
Invert 6										
Invert 7										
Invert 8										

RIGHT-SIDE UP VIEW (int. dimensions)

UPSIDE-DOWN VIEW (int. dimensions)



INSIDE WALL DIMENSIONS



Coating (Int):
 Coating (Ext):

Seam Up: Tongue
 Seam Dn: n/a

Wall Thickness: 8"
 Floor Height: 8"

Height (Int): 45"
 Height (Ext): 53"

Weight (Net): 13878 lb
 Volume (Net): 3.54cu.yd