

**Job Name: 26-1315 - Ruby Drive Extension**  
**Job Location: Madisonville, KY**  
**Contractor: Steve Pleasant Excavating**

PC: E. Bradley  
 TECH: J. Horsley  
 Plant: 100



Structure ID: C-11 SS-MH

Spec: Sanitary  
 Type: SAN.MH  
 Size: 48"

Rim: 454'  
 Invert: 443.94'  
 Rim to Invert: 10.06'

Sump: 2"  
 Floor (Top): 443.773'  
 Floor Height: 6"

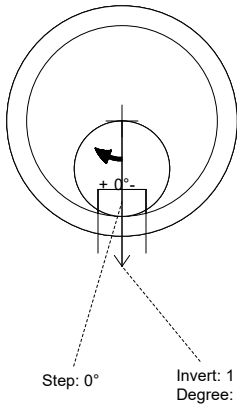
Floor (Bot): 443.273'  
 Overall Height: 10.583'  
 Slack: 1.72"

**Structure Notes:**

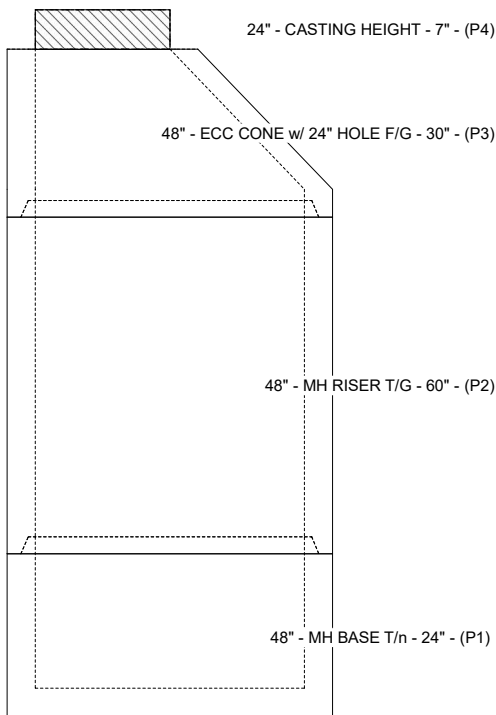
1. PER ASTM C-478 SPECS
2. CONCRETE: 4,000 PSI AT 28 DAYS
3. REINFORCEMENT: PER ASTM A615
4. INVERT CHANNEL REQUIRED
5. STEPS AT 0 DEGREES
6. HOE MC-315 FRAME & COVER "SANITARY" SUPPLIED BY ICAST
7. HOE MC-315 INFLOW DISH SUPPLIED BY ICAST

**STRUCTURE SUMMARY:**

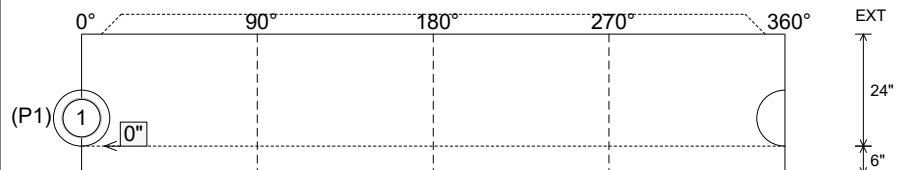
- P4) 24" - CASTING HEIGHT - 7" 0 lb
  - P3) 48" - ECC CONE w/ 24" HOLE F/G - 30" 2050 lb
  - P2) 48" - MH RISER T/G - 60" 4192 lb
  - P1) 48" - MH BASE T/n - 24" 2959 lb
  - 1) 48" - MH INVERT CHANNEL - FULL HEIGHT 1440 lb
  - 1) JOINT WRAP - 0.065"x6"x50' CONSEAL CS212 0 lb
  - 1) JOINT WRAP PRIMER - CONSEAL CS-75 (1 gal.) 0 lb
  - 1) Inflow Dish FOR MC-315 2 lb
  - 1) CASTING - HOE MC-315 Self Seal F/C Sanitary 258 lb
  - 2) 48" - Conseal CS-102 1.00" (Double) 0 lb
  - 1) PSX - 12-08 NYLO 8 lb
  - 9) MH Step ML-10-TDS-NCR - 10" 0 lb
- Structure Total: 10908 lb



Position	Elev	Angle	Pipe	Pipe OD	Hole	Connector	Up (L)	Ref
Rim	454'							
Reducer								
Invert 1	443.94'	0°	8" PVC SDR35	8.5"	12"	PSX 12-08 NYLO	0"	P1
Invert 2								
Invert 3								
Invert 4								
Invert 5								
Invert 6								
Invert 7								
Invert 8								



**Cast (Int. Dim.) - Interior Dimensions**



Submittal Drawing  
 3/31/2026 8:29:00 AM

SUBMITTAL  
 APPROVED BY: