

Job Name: 26-1315 - Ruby Drive Extension
 Job Location: Madisonville, KY
 Contractor: Steve Pleasant Excavating

Plant: 100

3/31/2026 10:53:12 AM

Tech: J. Horsley

PC: E. Bradley



Structure ID: A-5 CBIA

P2 BX036036-08TS024036

CB TRANSITION SLAB 24"X36" HOLE T/F

- P4) 24" x 120" - CB INLET KY A 10' TOP RIGHT F/G - 10"
- P3) 24" x 120" - CB INLET KY A 10' BOTTOM RIGHT T/G - 18"
- P2) 36" x 36" - CB TRANSITION SLAB 24"X36" HOLE T/F - 8"
- P1) 36" x 36" - BOX BASE 8inW, 8inF, Variable Ht F/n - 37"
- 1) CASTING - HOE KY-206 F/C (KY CBIA)
- 1) This Structure Includes a Cast-in Item - KY-206 Frame Flange Side Up
- 1) 36" x 36" - Conseal CS-102 1.00"
- 1) 24" x 36" - Conseal CS-102 1.00"
- 1) Hole - 28
- 1) Hole - 24
- 1) Hole - 30

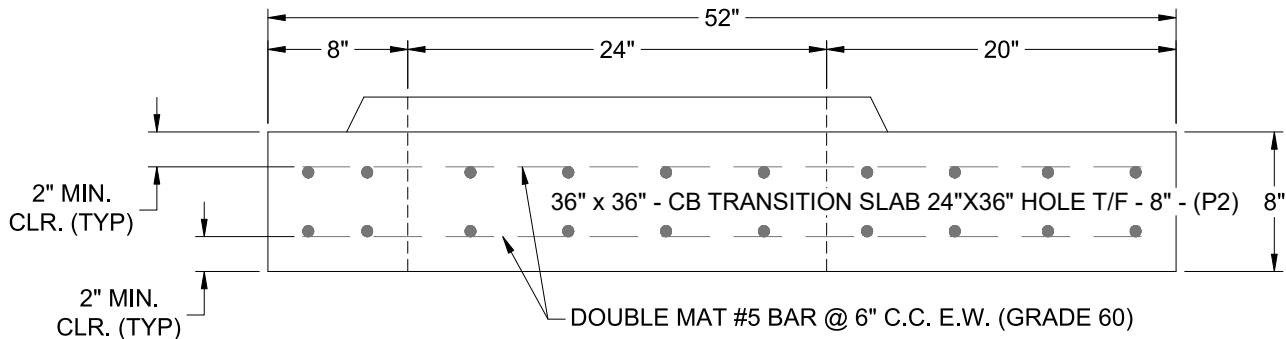
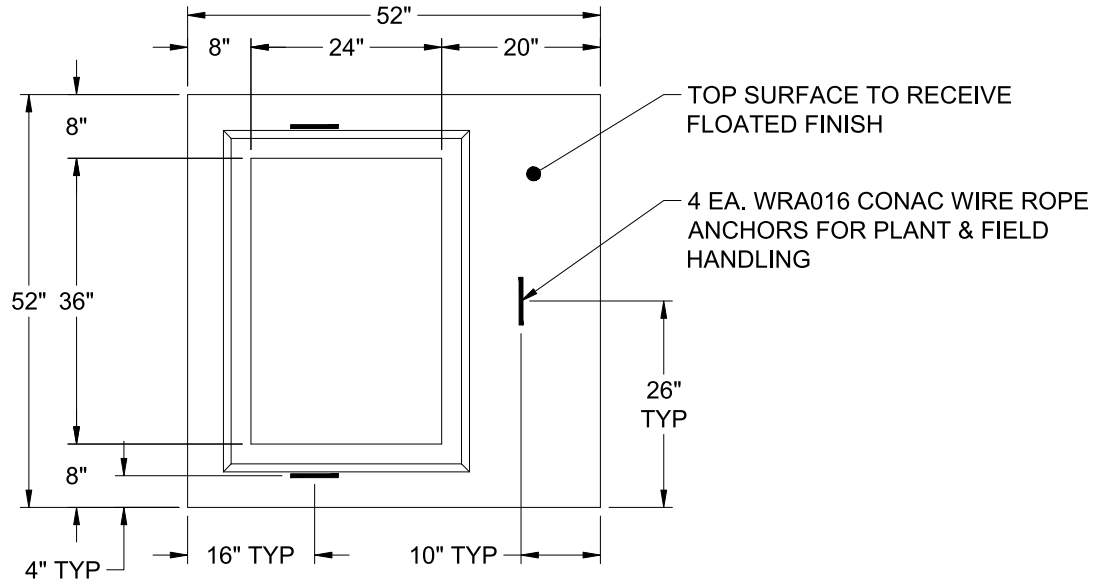
3398 lb
 5270 lb
 1235 lb
 4995 lb
 206 lb
 0 lb
 0 lb
 0 lb
 0 lb
 0 lb
 0 lb

 15104 lb

Structure Total:

Structure Notes:

1. PER KYTC CBI TYPE A / ASTM C-913 SPECS
2. CONCRETE: 4,000 PSI AT 28 DAYS
3. REINFORCEMENT: DOUBLE MAT #5 BAR @ 6" C.C. E.W. (GRADE 60) - 2" MIN. REBAR CLEARANCE (TYP)
4. HOE KY-206 FRAME & COVER "STORM" SUPPLIED BY ICAST - FRAME TO BE CAST INTO TOP PHASE TOP FLANGE SIDE UP
5. LIFTERS: 4 EA. WRA016 CONAC WIRE ROPE ANCHORS FOR PLANT & FIELD HANDLING
6. TOP SURFACE TO RECEIVE FLOATED FINISH



Coating (Int):
 Coating (Ext):

Seam Up: Tongue
 Seam Dn: Flat

Wall Thickness: 8"

Height (Ext): 8"

Weight (Net): 1235 lb
 Volume (Net): 0.32cu.yd