

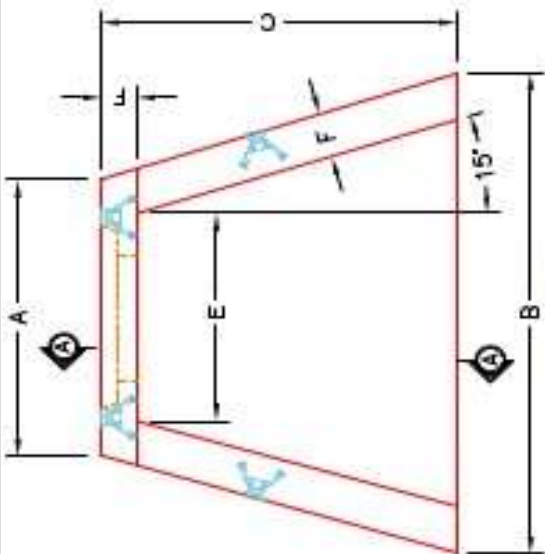


Structure ID: 124-17 HW

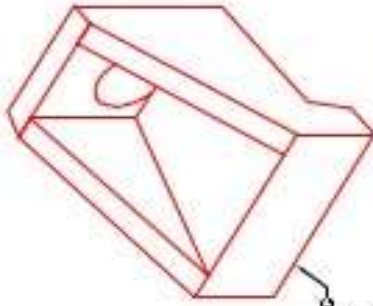
P1 HWA15F

15" - HW AW w/FLAT BOTTOM F/F

DIMENSIONS & QUANTITIES									
TYPE	PIPE Ø	A	B	C	D	E	F	G	WEIGHT
AW	15"	2'-8"	4'-0"	2'-6"	2'-2"	2'-0"	6"	0"	1,380 LBS.

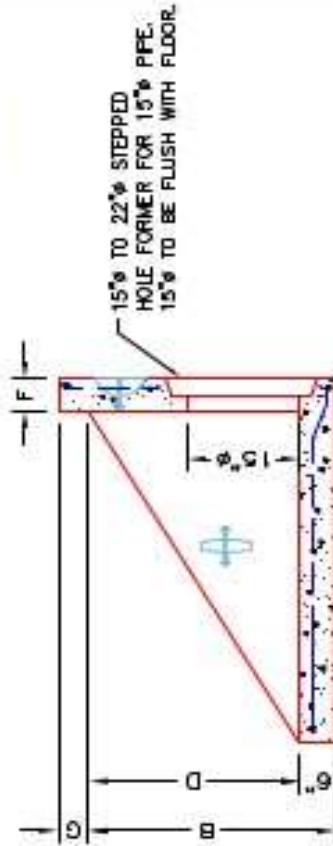


PLANVIEW

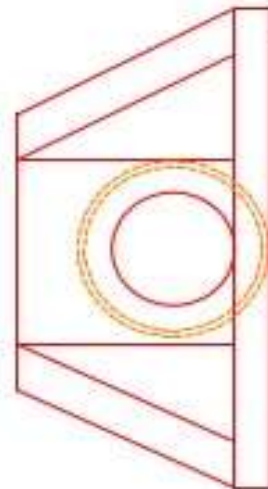


ISOMETRIC VIEW

WITH FOOTING
(SEE DETAIL)



SECTION A-A



FRONT ELEVATION

NOTES:

1. CONCRETE: 4500 PSI AT 28 DAYS MIN. STRENGTH.
2. REINFORCING: #4 BAR @ 12" C/C E.W. - GRADE 60, (WITH 2" CONCRETE COVER MINIMUM)
3. REINFORCING BARS TO BE TACK WELDED OR TIED.

PRODUCTION WORK ORDER

QUALITY CONTROL CHECKLIST

- ALL DIMENSIONS CORRECT.
- LIFTERS INSTALLED.
- STEPPED HF CORRECT SIZE.
- REINFORCING CORRECT.
- CLEARANCE ON REINFORCING CORRECT.
- EDGES CHAMFERED.
- ALL PATCHWORK ACCEPTABLE.



DESCRIPTION: AW WINGED HEADWALL FOR 15" Ø PIPE
CUSTOMER: STOCK
PROJECT: STOCK
STRUCTURE ID: STOCK
SALES ORDER NO: T.B.D.
CHECK: A. WELLS
DRAWING: J. HORSLEY
DATE: 09/25/24
SCALE: NTS
PG. 1 of 1

PRODUCT I.D.: HWA15F
PRODUCT VIEW: RIGHT SIDE UP
PLANT: BEAVER DAM, KY.
WEIGHT: 1,630 LBS.
TOP SECTION JOINT: N/A
BASE SECTION JOINT: N/A
QC CHECK INITIALS: