

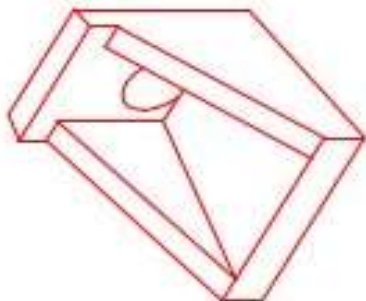


Structure ID: 123-16 HW

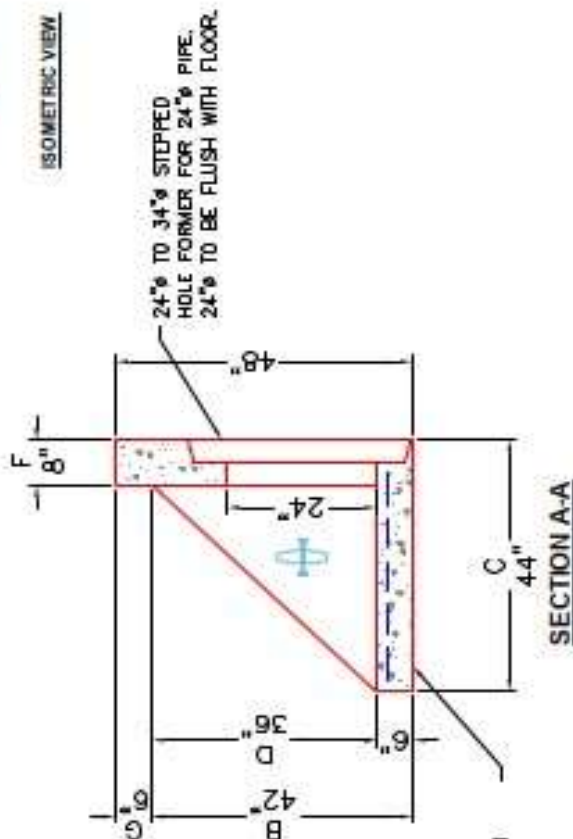
P1 HWBW24F

24" - HW BW w/FLAT BOTTOM F/F

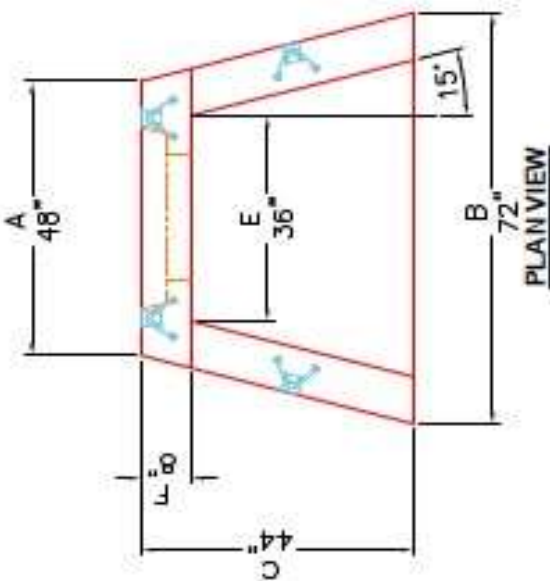
DIMENSIONS & QUANTITIES									
TYPE	PIPE Ø	A	B	C	D	E	F	G	WEIGHT
BW	24"	4'-0"	6'-0"	3'-5"	3'-0"	3'-0"	6"	6"	3,100 LBS.



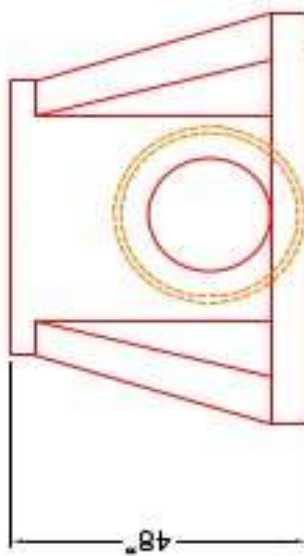
ISOMETRIC VIEW



SECTION A-A



PLANVIEW



FRONT ELEVATION

NOTES:

1. CONCRETE: 4500 PSI AT 28 DAYS MIN. STRENGTH.
2. REINFORCING: #4 BAR @ 12" C/C E.W. - GRADE 60, (WITH 2" CONCRETE COVER MINIMUM)
3. REINFORCING BARS TO BE TACK WELDED OR TIED.

PRODUCTION WORK ORDER

QUALITY CONTROL CHECKLIST
<input type="checkbox"/> ALL DIMENSIONS CORRECT.
<input type="checkbox"/> UTTERS INSTALLED.
<input type="checkbox"/> STOPPED IF CORRECT SIZE.
<input type="checkbox"/> REINFORCING CORRECT.
<input type="checkbox"/> CLEARANCE ON REINFORCING CORRECT.
<input type="checkbox"/> EDGES CHAMFERED.
<input type="checkbox"/> ALL PATCHWORK ACCEPTABLE.



PRODUCT I.D.: HWBW24F	DESCRIPTION: 24in BW HEADWALL FLAT BOTTOM
PRODUCT VIEW: RIGHT SIDE UP	CUSTOMER: STOCK
PLANT: BEAVER DAM, KY.	PROJECT: T.B.D.
WEIGHT: 3,475 LBS.	STRUCTURE ID: T.B.D.
TOP SECTION JOINT: N/A	SALES ORDER NO: STOCK
BASE SECTION JOINT: N/A	CHECK: B. SMITH
QC CHECK INITIALS:	DRAWING: J. HORSLEY
	DATE: 06/04/24
	SCALE: NTS
	PG. 1 of 1