

Job Name: 26-1303 - Hale Ave & Woods Ferry Rd. Stormwater
 Job Location: Gallatin, TN 37066
 Contractor: Stewart Richey

Plant: 100
 4/13/2026 7:06:19 PM

Tech: Jared - F
 PC: T. Lewis

Structure ID: 110-2 ST-MH

P2 BX036048-06LD08-24ECC

CB FLAT TOP 8"W w/24"Hole F/F

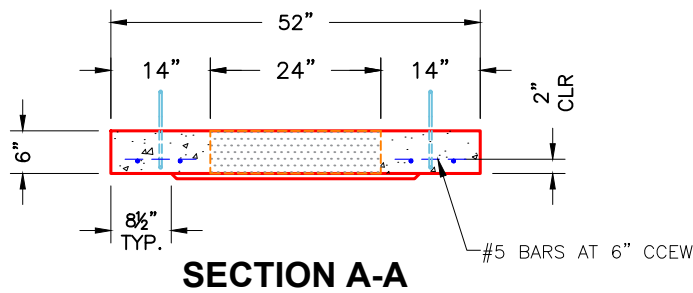
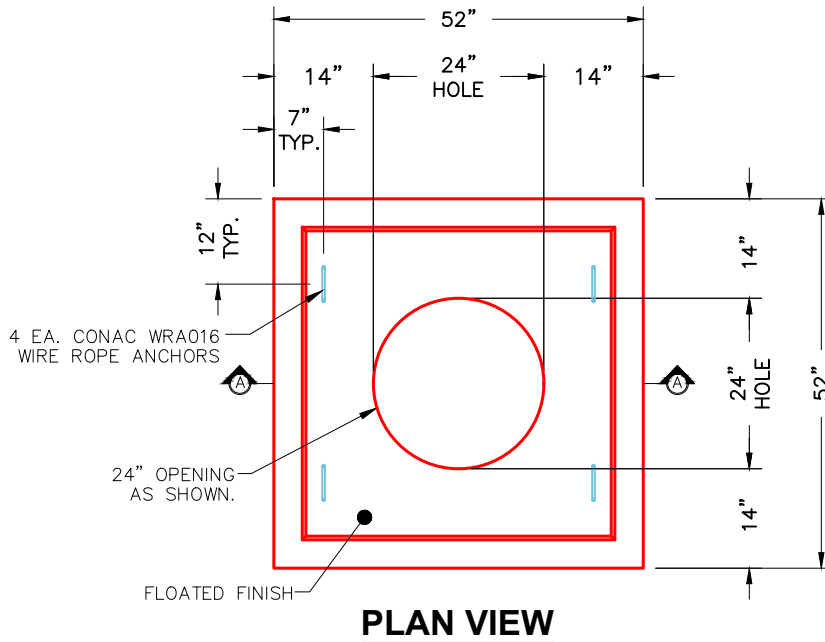
- P3) 24" - CASTING HEIGHT - 4"
- P2) 36" x 36" - CB FLAT TOP 8"W w/24"Hole F/F - 6"
- P1) 36" x 36" - BOX BASE 8inW, 8inF, Variable Ht F/n - 28"
- 1) CASTING - JBS 1154 F/C STORM
- 1) 36" x 36" - Conseal CS-102 1.00"
- 2) DOGHOUSE INVRTD - 32"x29"

0 lb
 1134 lb
 3925 lb
 250 lb
 0 lb
 0 lb

 Structure Total: 5309 lb

- Structure Notes:**
1. PER ASTM C913 SPECIFICATIONS.
 2. CONCRETE = 4,000 PSI AT 28 DAYS.
 3. NO STEPS AND NO INVERT CHANNEL.
 4. CASTING BY ICAST (JBS 1154 F/C STORM).

REINFORCING PER ASTM A615 (GRADE 60).
 - TOP SLAB (As .62) #5 BARS AT 6" C.C.E.W.
 - WALLS (As .12) #5 BARS AT 12" C.C.E.W.
 - FLOOR (As .12) #5 BARS AT 12" C.C.E.W.



NOTES:

1. MANUFACTURED TO ASTM C-913 (LATEST REVISION).
2. CONCRETE: 4,000 PSI AT 28 DAYS.
3. REINFORCING: #5 BAR @ 6" O.C. E.W. (GRADE 60).

Coating (Int):
 Coating (Ext):

Seam Up: Flat
 Seam Dn: Flat

Wall Thickness: 8"

Height (Ext): 6"

Weight (Net): 1134 lb
 Volume (Net): 0.29cu.yd