

Job Name: 26-1301 WCSC New Pre-K Classroom Addition
 Job Location: Newburgh, IN
 Contractor: Hahn Excavating, Inc.

Plant: Beaver Dam
 3/23/2026 10:51:55 AM

Tech: S. Felletter
 PC: E. Bradley



Structure ID: Str. 17-18 ST-IN

P2 BX024024-08LD06S

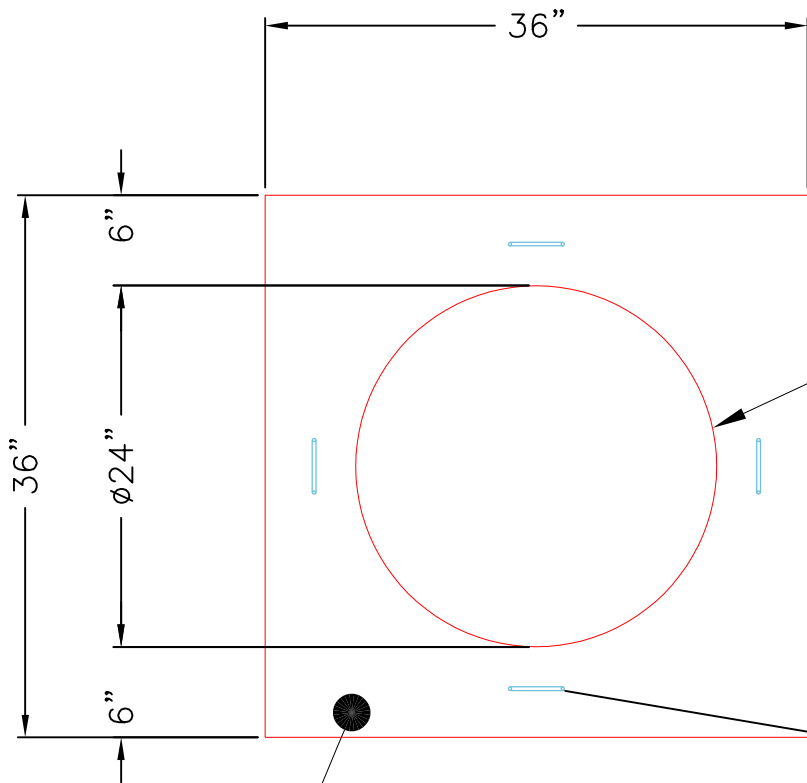
BX FLAT LID 6inW w/24in Hole F/F

- P3) 24" - CASTING HEIGHT - 7"
- P2) 24" x 24" - BX FLAT LID 6inW w/24in Hole F/F - 8"
- P1) 24" x 24" - BOX BASE 6inW, 6inF, Variable Ht F/n - 33"
- 1) CASTING - HOE MCB-315-R F/G
- 1) 24" x 24" - Conseal CS-102 1.00"
- 1) Hole - 14
- 1) Hole - 20

0 lb
 566 lb
 2411 lb
 258 lb
 0 lb
 0 lb
 0 lb

 Structure Total: 3235 lb

Structure Notes:
 1. PER ASTM C913 SPECIFICATIONS.
 2. CONCRETE = 4,000 PSI AT 28 DAYS.
 3. NO INVERT CHANNEL.
 4. CASTING BY ICAST (HOE MCB-315-R).
 REINFORCING PER ASTM A615 (GRADE 60).
 - TOP SLAB (As .62) #5 BARS AT 6" C.C.E.W.
 - WALLS (As .12) #5 BARS AT 12" C.C.E.W.
 - FLOOR (As .12) #5 BARS AT 12" C.C.E.W.



PLAN VIEW

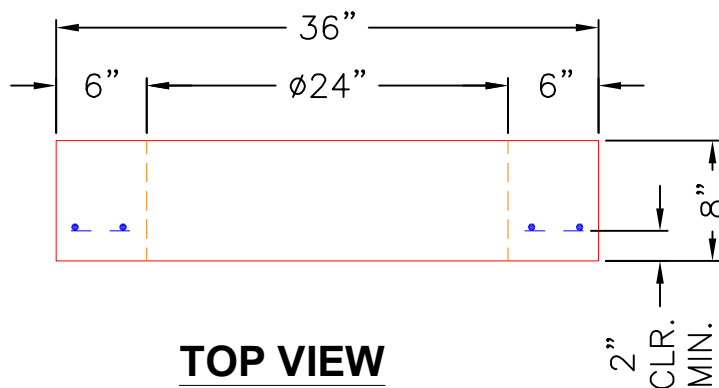
NOTES:

- 1. MANUFACTURED TO ASTM C-913 (LATEST REVISION).
- 2. CONCRETE: 5,000 PSI AT 28 DAYS.
- 3. REINFORCING: #5 BAR @ 6" O.C. E.W. (GRADE 60).

Ø24" OPENING AS SHOWN

4 EA. CONAC .8 TON 8¹/₁₆" (6MM) WIRE ROPE ANCHORS REQUIRED.

FLOAT FINISH



TOP VIEW

Coating (Int):
 Coating (Ext):

Seam Up: Flat
 Seam Dn: Flat

Wall Thickness: 6"

Height (Ext): 8"

Weight (Net): 566 lb
 Volume (Net): 0.14cu.yd