

Job Name: 26-1301 WCSC New Pre-K Classroom Addition
 Job Location: Newburgh, IN
 Contractor: Hahn Excavating, Inc.

Plant: Beaver Dam

Tech: S. Felletter

3/23/2026 10:51:54 AM

PC: E. Bradley



Structure ID: Str. 14-15 ST-MH

P2 MH048LD07

MH FLAT TOP w/ 24" Center Hole F/F

- P3) 24" - CASTING HEIGHT - 7"
- P2) 48" - MH FLAT TOP w/ 24" Center Hole F/F - 7"
- P1) 48" - MH BASE Custom Ht F/n - 57"
- 1) CASTING - HOE MC-315 F/C Vented
- 1) 48" - Conseal CS-102 1.00"
- 3) Hole - 24"
- 1) Hole - 8"
- 4) MH Step ML-10-TDS-NCR - 10"

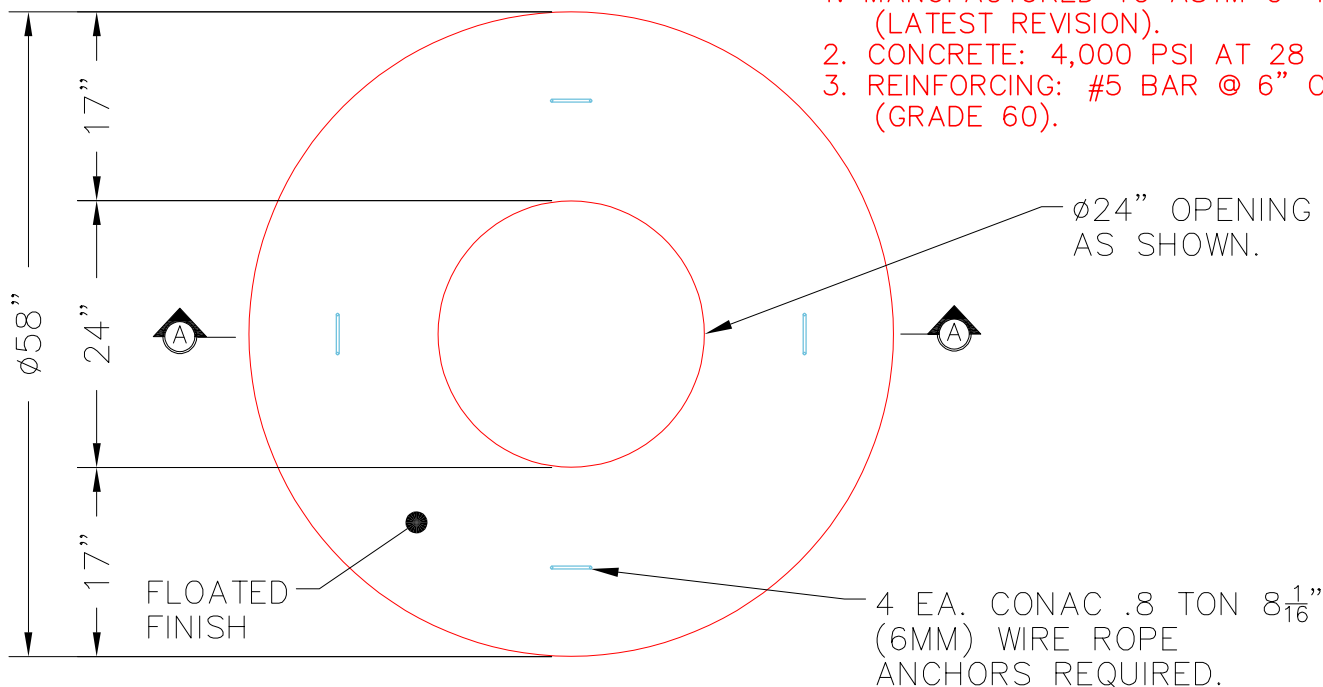
0 lb
 1700 lb
 4699 lb
 258 lb
 0 lb
 0 lb
 0 lb
 0 lb
 0 lb
 Structure Total: 6657 lb

Structure Notes:
 1. PER ASTM C478 SPECIFICATIONS.
 2. CONCRETE = 4,000 PSI AT 28 DAYS.
 3. CASTING BY ICAST (HOE MC-315 F/ VENTED COVER)

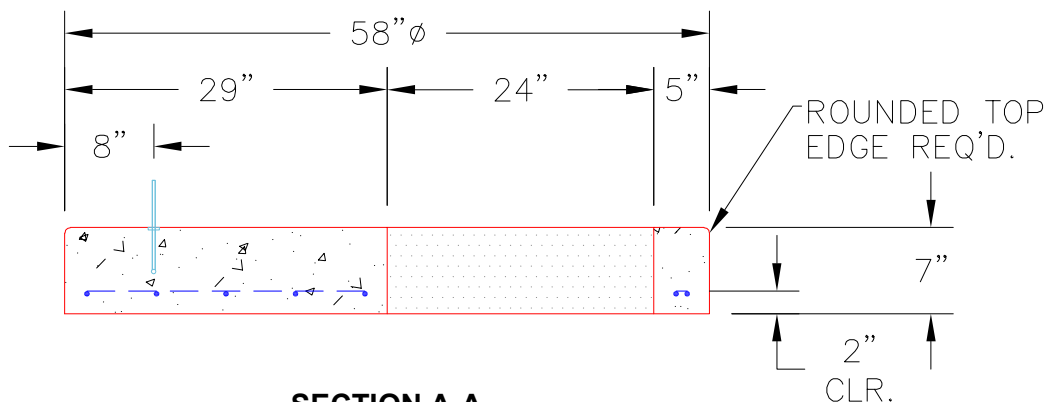
REINFORCING PER ASTM A615 (GRADE 60).
 - TOP SLAB (As .62) #5 BARS AT 6" C.C.E.W..
 - RISER/WALLS (As .12)
 - FLOOR (As .31) #5 BARS AT 12" C.C.E.W.

NOTES:

- 1. MANUFACTURED TO ASTM C-478 (LATEST REVISION).
- 2. CONCRETE: 4,000 PSI AT 28 DAYS.
- 3. REINFORCING: #5 BAR @ 6" C.C. E.W. (GRADE 60).



PLAN VIEW



SECTION A-A

Coating (Int):
 Coating (Ext):

Seam Up: Flat
 Seam Dn: Flat

Wall Thickness: 5"

Height (Ext): 7"

Weight (Net): 1700 lb
 Volume (Net): 0.42cu.yd