

Structure ID: Str. 13-14 ST-CI

P1 BX2436-08BA42

BOX BASE 8inW, 8inF F/n

P2) 24" x 36" - CASTING HEIGHT - 6" P1) 24" x 36" - BOX BASE 8inW, 8inF F/n - 42" 1) CASTING - HOE 525 SET FLAT GRATE (F/G/H) 1) 24" x 36" - Conseal CS-102 1.00" 2) Hole - 16	<table style="width:100%; border-collapse: collapse;"> <tr><td>0 lb</td></tr> <tr><td>5391 lb</td></tr> <tr><td>442 lb</td></tr> <tr><td>0 lb</td></tr> <tr><td>0 lb</td></tr> <tr><td>-----</td></tr> <tr><td>Structure Total: 5833 lb</td></tr> </table>	0 lb	5391 lb	442 lb	0 lb	0 lb	-----	Structure Total: 5833 lb
0 lb								
5391 lb								
442 lb								
0 lb								
0 lb								

Structure Total: 5833 lb								

Structure Notes:

1. PER ASTM C913 SPECIFICATIONS.
2. CONCRETE = 4,000 PSI AT 28 DAYS.
3. NO INVERT CHANNEL.
4. CASTING BY ICAST (HOE 525 FLAT SET)

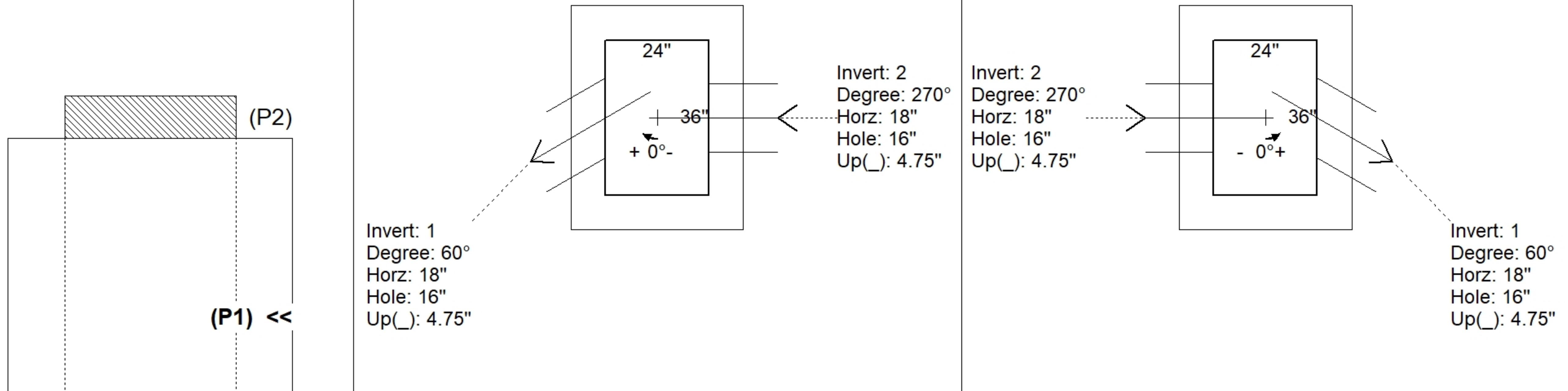
REINFORCING PER ASTM A615 (GRADE 60).
 - WALLS (As .12) #5 BARS AT 12" C.C.E.W.
 - FLOOR (As .12) #5 BARS AT 12" C.C.E.W.

Rim: 445.35' Rim to Invert: 3.54' Slack: 0.48" Sump: 6" Step Position:

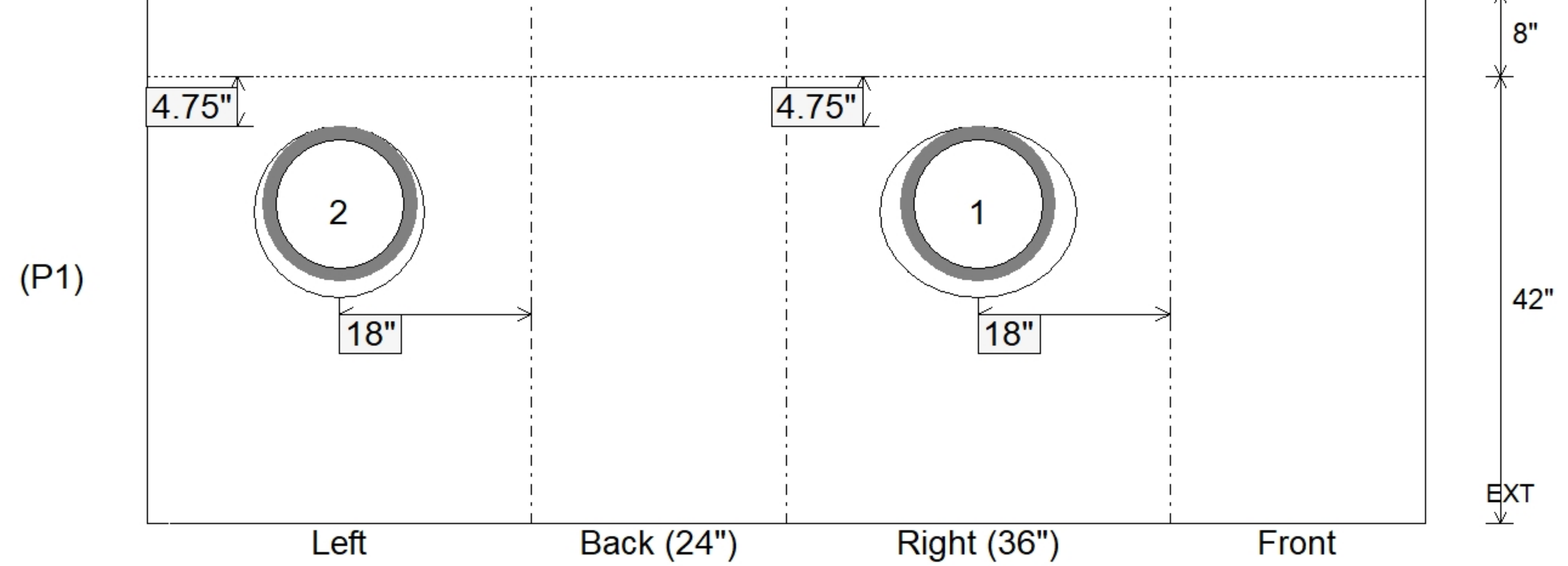
Position	Elev	Angle	Ext. (cw)	Pipe	Pipe OD	Connector	Hole	Horz Size	Up ()	Offset
Invert 1	441.81'	60°	21.381"	12" HDPE	14.5"	Hole 16	16"	18.475"	4.75"	6"
Invert 2	441.81'	270°	26"	12" HDPE	14.5"	Hole 16	16"	16"	4.75"	0"
Invert 3										
Invert 4										
Invert 5										
Invert 6										
Invert 7										
Invert 8										

RIGHT-SIDE UP VIEW (int. dimensions)

UPSIDE-DOWN VIEW (int. dimensions)



INSIDE WALL DIMENSIONS



Coating (Int): Coating (Ext):	Seam Up: Flat Seam Dn: n/a	Wall Thickness: 8" Floor Height: 8"	Height (Int): 42" Height (Ext): 50"	Weight (Net): 5391 lb Volume (Net): 1.38cu.yd
----------------------------------	-------------------------------	--	--	--