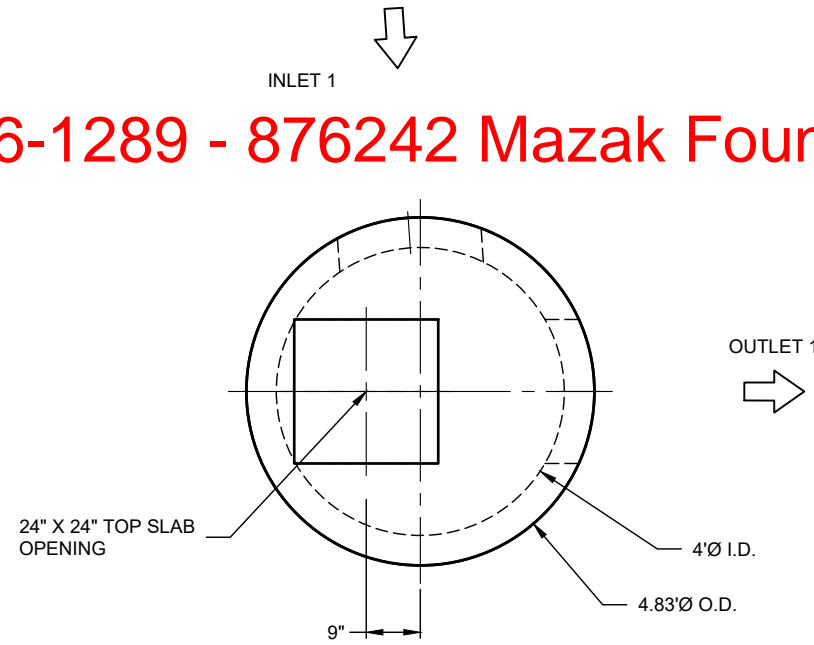
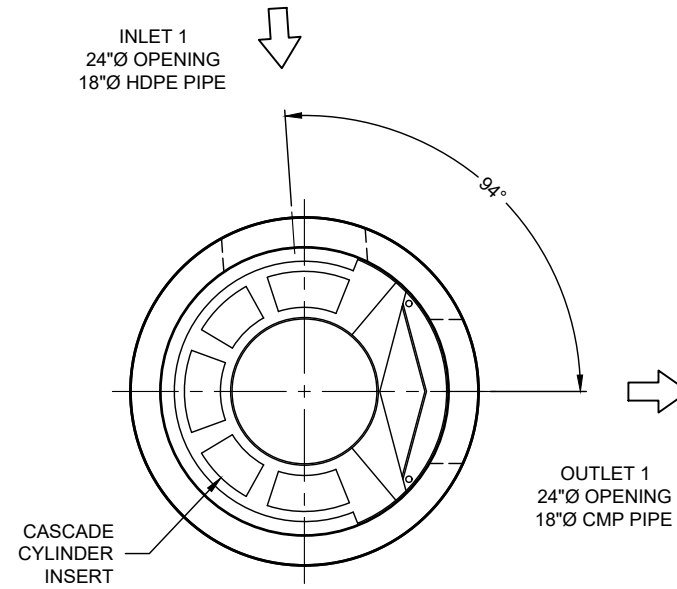


26-1289 - 876242 Mazak Foundation



PLAN VIEW
INTERNALS NOT SHOWN



PLAN VIEW FOR PIPE ORIENTATION
TOP SLAB NOT SHOWN

MATERIAL LIST

COUNT	DESCRIPTION	PART NUMBER	PROVIDED BY	INSTALLED BY
1	CS-4 CYLINDER INSERT, STD.	325-003949	CONTECH	PRECASTER
4	CS-4 ALUMINUM INSTALLATION BRACKETS	325-003956	CONTECH	PRECASTER
1	CS-4 HARDWARE KIT	325-003955	CONTECH	PRECASTER
1	24" SQ. GRATE INLET TRAY	325-001751	CONTECH	CONTRACTOR
1	SEALANT FOR JOINTS		PRECASTER	CONTRACTOR
1	24" X 24" FRAME AND GRATE, EJ #45624050A01, OR EQUIV.	325-000363	CONTECH	CONTRACTOR

ICAST to fully pre-assemble prior to shipment

GENERAL NOTES

- DESIGN LOADING - AASHTO HS-20
- ALL PRECAST CONCRETE MANUFACTURED PARTS SHALL CONFORM TO ASTM C-478, WITH MINIMUM CONCRETE STRENGTH OF 4000 PSI AT 28 DAYS
- JOINT SEALANT SHALL CONFORM TO ASTM C-990 OR ASTM C-443
- GROUND WATER ELEVATION ASSUMED AT OUTLET INVERT
- MANUFACTURING TOLERANCE = +/- 1/2-INCH
- SOME HIDDEN LINES MAY BE OMITTED FOR CLARITY

INSTALLATION NOTES

- PRECASTER TO SHIP ACCESS CASTINGS WITH STRUCTURE
- REFER TO CONTECH ASSEMBLY INSTRUCTIONS FOR ADDITIONAL INFORMATION.
- PRECASTER TO INSTALL INTERNAL COMPONENTS PRIOR TO SHIPPING UNLESS INSTRUCTED OTHERWISE BY CONTECH
- PIPE OPENINGS SHALL BE STENCILED "INLET" OR "OUTLET" AS APPROPRIATE
- APPLYING ALIGNMENT MARKS ON ALL PIECES OF MULTIPLE PIECE ASSEMBLIES IS ENCOURAGED
- IF STRUCTURE IS DELIVERED IN MULTIPLE SECTIONS, EACH PIECE SHALL BE LABELED WITH THE CONTECH PROJECT NUMBER, SEQUENCE NUMBER AND SITE DESIGNATION

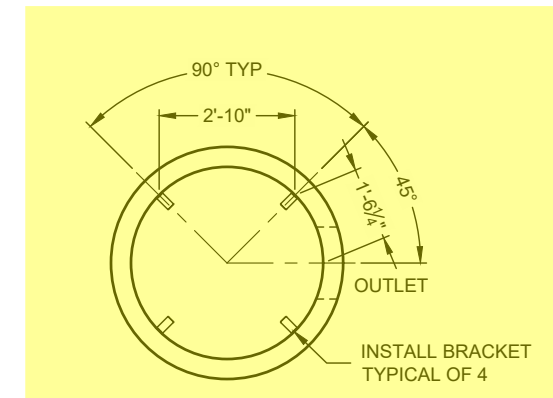
SITE INFORMATION

RIM ELEV. = 856.51+/-
 TOP OF STRUCTURE = 855.49
 INLET PIPE 1 INVERT ELEV. = 849.39
 INLET PIPE 1 DIAMETER AND MATERIAL = 18"Ø HDPE
 OUTLET PIPE INVERT ELEV. = 848.89
 OUTLET PIPE DIAMETER AND MATERIAL = 18"Ø CMP
 OUTSIDE BOTTOM OF STRUCTURE ELEV. = 844.14

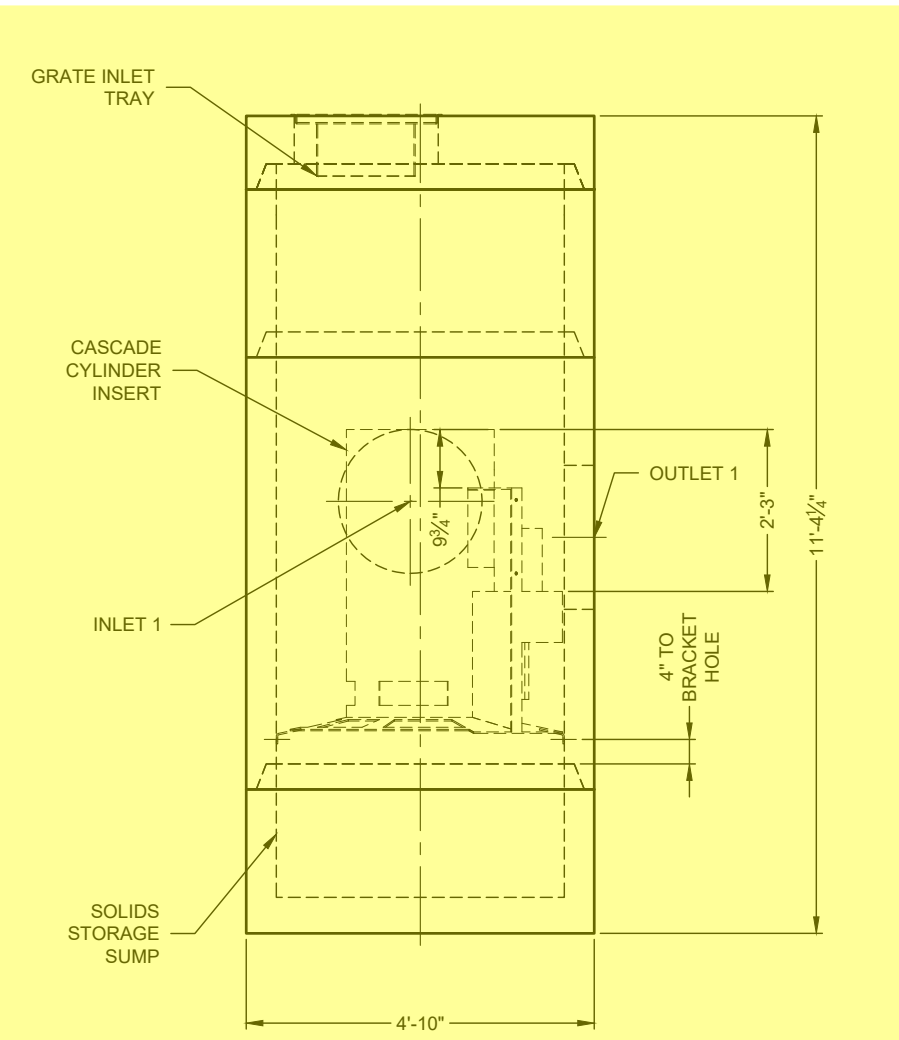
STRUCTURE WEIGHT

APPROXIMATE HEAVIEST PICK = 5500 LBS.
 STRUCTURE IS DELIVERED IN 4 PIECES

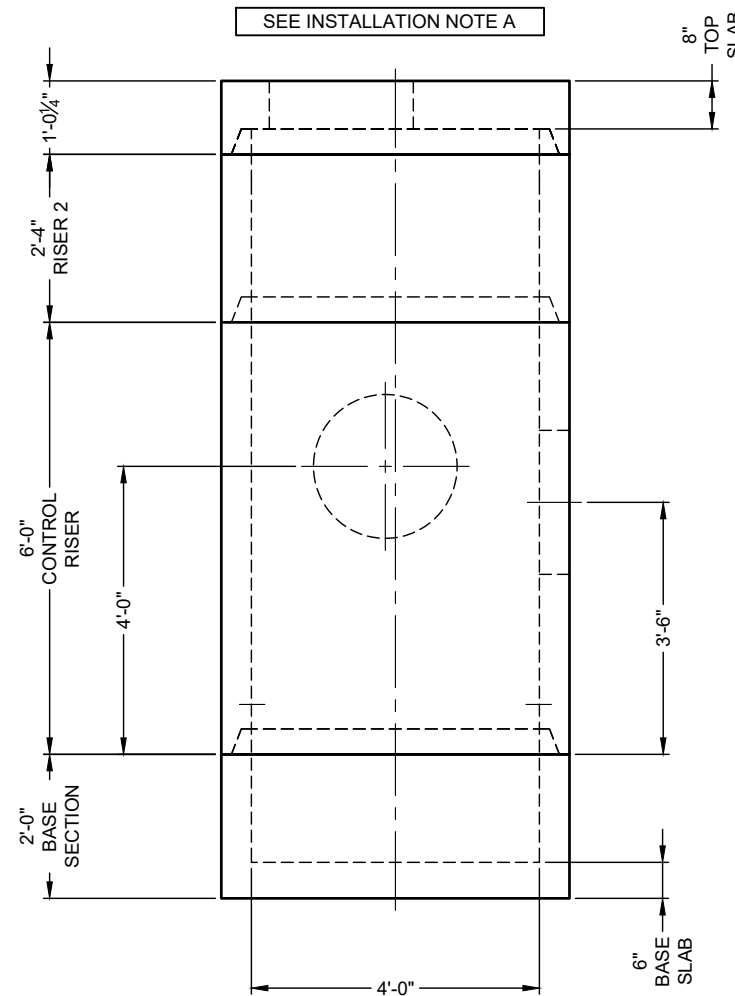
TOP SLAB = 2000 LBS.
 RISER 2 = 2500 LBS.
 CONTROL RISER = 5500 LBS.
 BASE SECTION = 3000 LBS.



SUPPORT BRACKET LAYOUT PLAN VIEW



ELEVATION VIEW



PRECAST COMPONENTS
INTERNALS NOT SHOWN

ICAST
5888 / 757440
LAYOUT 1A
5.63TS

CONTECH
FABRICATION
DRAWING

The design and information shown on this drawing is the property of CONTECH Construction Products Inc. or one of its affiliated companies ("CONTECH"). Neither this drawing, nor any part thereof, may be used, reproduced, or transmitted in any form or by any means, electronic or mechanical, including photocopying, recording, or by any information storage and retrieval system, without the prior written consent of CONTECH. Failure to comply with these terms and conditions shall constitute a disclaimer of any liability or responsibility for such use.

If discrepancies between the supplied information upon which the drawing is based and actual field conditions are encountered at site work progress, these are to be immediately reported to CONTECH. CONTECH immediately for re-evaluation of the design. CONTECH accepts no liability for designs based on missing, incomplete or inaccurate information supplied by others.

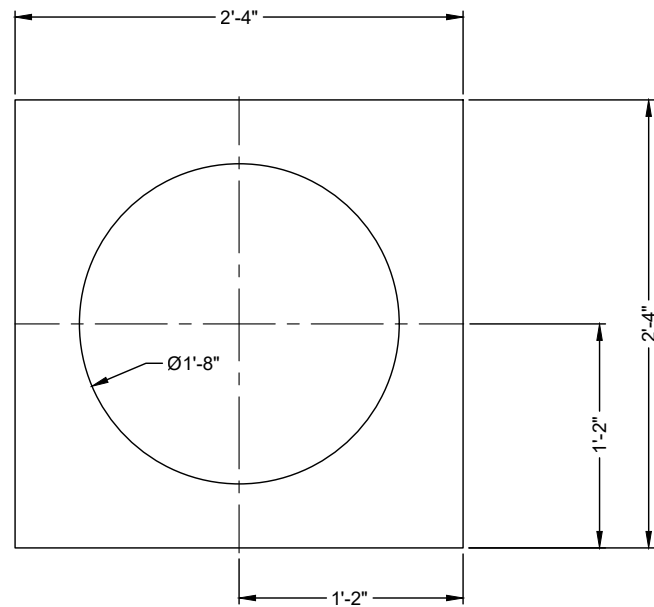
MARK	DATE	REVISION DESCRIPTION	BY

CS-4 - 876242-15
 MAZAK FOUNDATION DRIVE
 WAREHOUSE
 ELSMERE, KY
 SITE DESIGNATION: WQ-MH-5

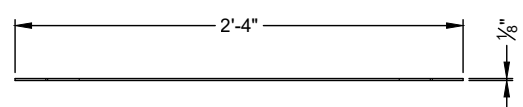
CONTECH
 ENGINEERED SOLUTIONS LLC
 A CONTECH COMPANY
 810 Centre Pointe Dr., Suite 400, West Chester, OH 45380
 800.338.1122 513.645.7000 513.645.7803 FAX
 FOR PATENT INFORMATION, GO TO www.contech.com/PT

DATE:	2/2/2026		
DESIGNED:	MDB	DRAWN:	MDB
CHECKED:	CEU	APPROVED:	MDB
PROJECT No.:	876242	SEQUENCE No.:	15
SHEET:	1	OF	1

26-1289 - 876242 Mazak Foundation

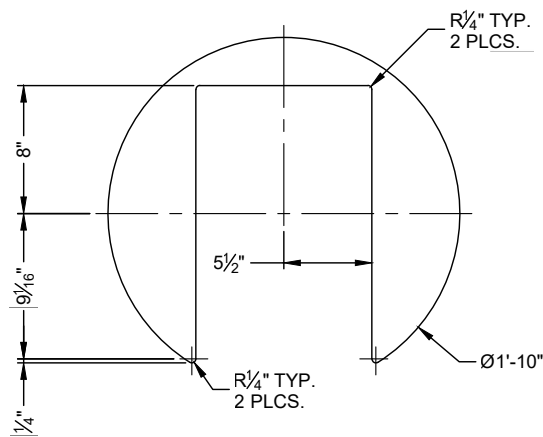


PLAN VIEW



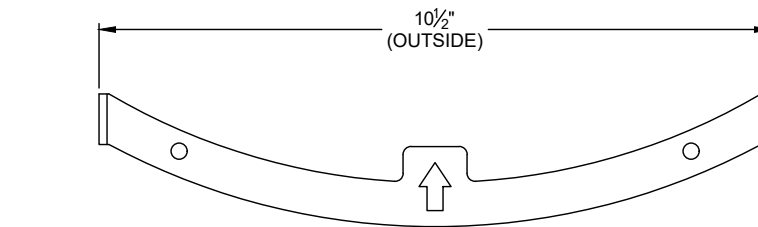
ELEVATION VIEW

MOUNTING PLATE DETAILS

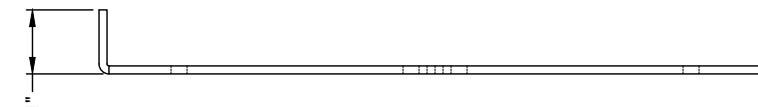


PLAN VIEW

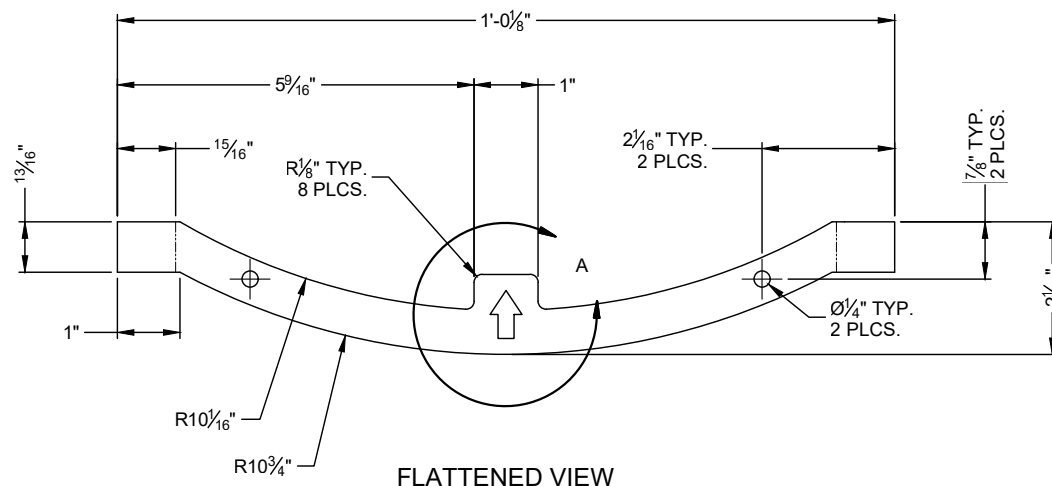
TRAY SUPPORT DETAILS



PLAN VIEW



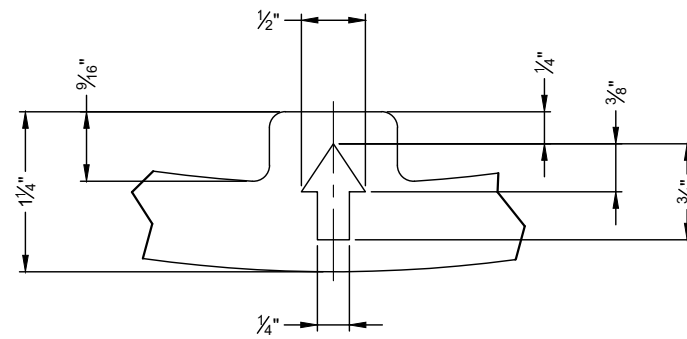
ELEVATION VIEW



FLATTENED VIEW

INDEXER DETAILS

SCALE: 3" = 1'-0"



DETAIL A
NOT TO SCALE

CONTECH
FABRICATION
DRAWING

DIMENSIONS ARE IN INCHES DEBUR EDGES BREAK CORNERS
MAKE ALL TROUGHS AND INLET/OUTLET PLATES IN SETS TO ENSURE FIT
MATERIAL: 3/16" THICK 5052-H32 ALUMINUM ALLOY
ALL BEND RADII EQUAL TO MATERIAL THICKNESS

TOLERANCES:
FRACTIONAL: +/- 1/16 INCH TWO PLACE DECIMAL: 0.12
ANGULAR: MACH +/-1 INCH, BEND +/-1 DEG. THREE PLACE DECIMAL: 0.060

The design and information shown on this drawing is the property of CONTECH ENGINEERED SOLUTIONS LLC or one of its affiliated companies ("CONTECH"). Neither this drawing nor any part thereof, may be used, reproduced, or transmitted in any form or by any means, electronic or mechanical, including photocopying, recording, or by any information storage and retrieval system, without the prior written consent of CONTECH. Failure to comply with these terms and conditions shall constitute a breach of contract and CONTECH expressly disclaims any liability or responsibility for such use. If discrepancies between the supplied information upon which the drawing is based and actual field conditions are encountered, the user shall be responsible for the design. CONTECH is not responsible for re-evaluation of the design. CONTECH accepts no liability for designs based on missing, incomplete or inaccurate information supplied by others.

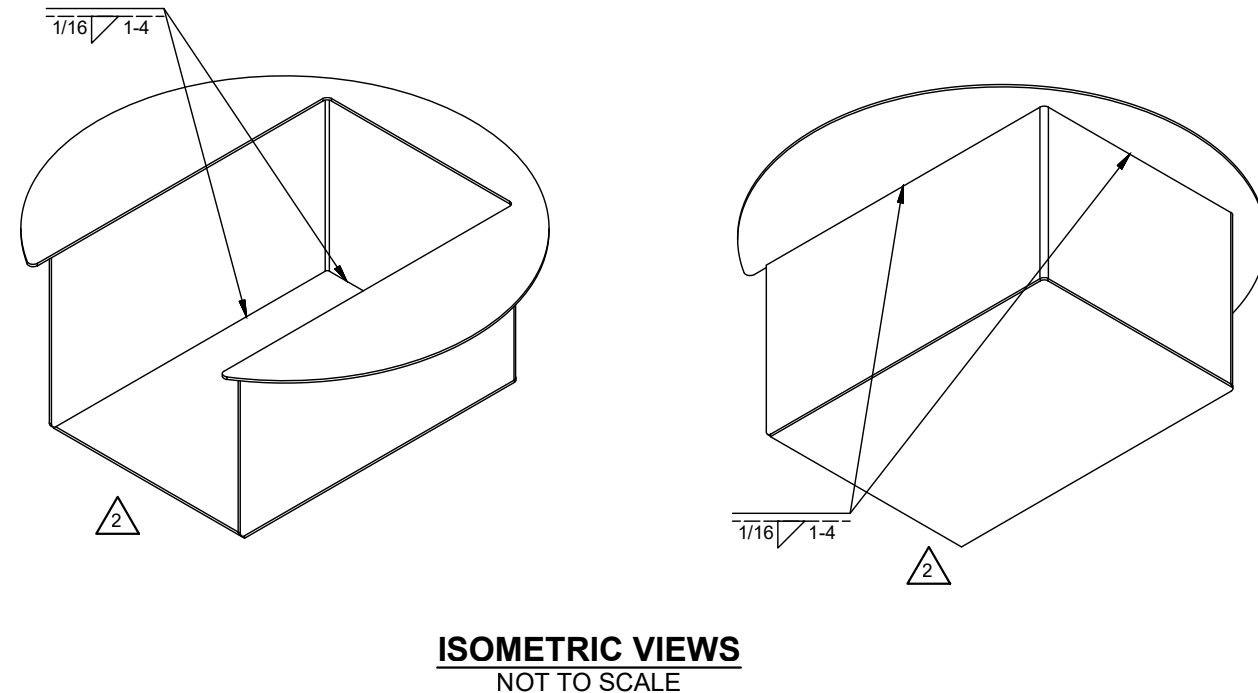
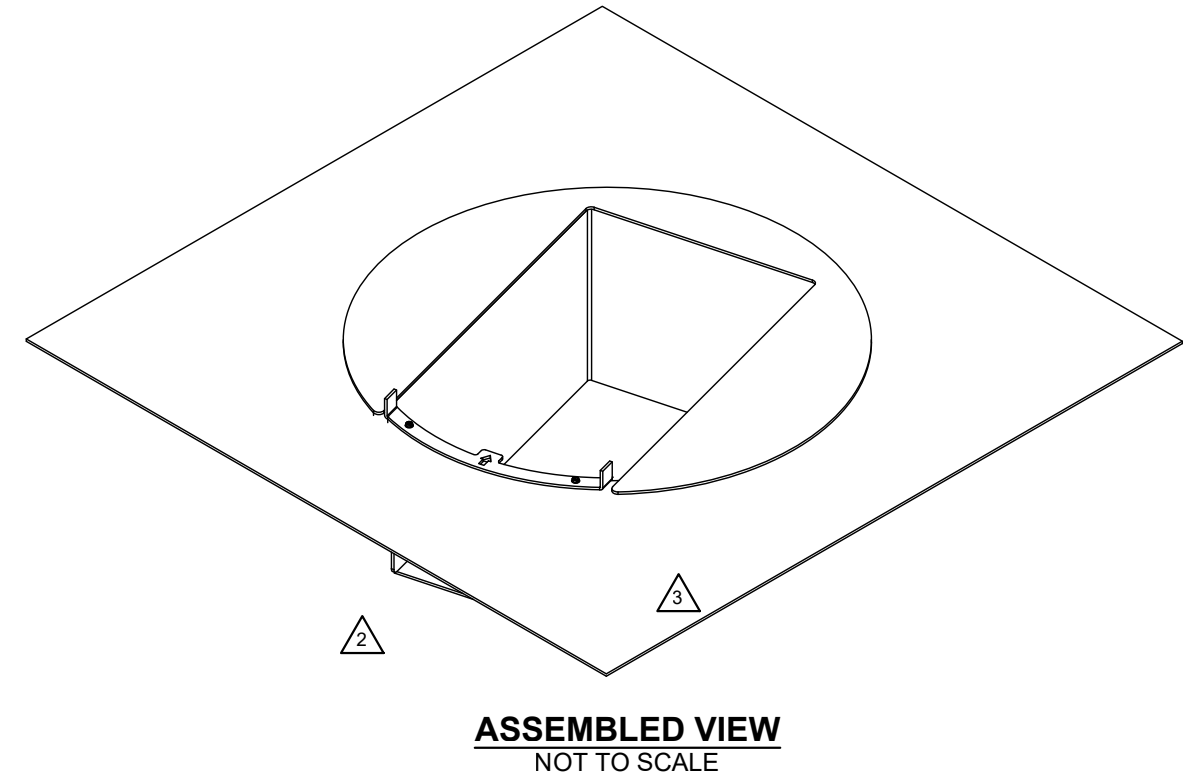
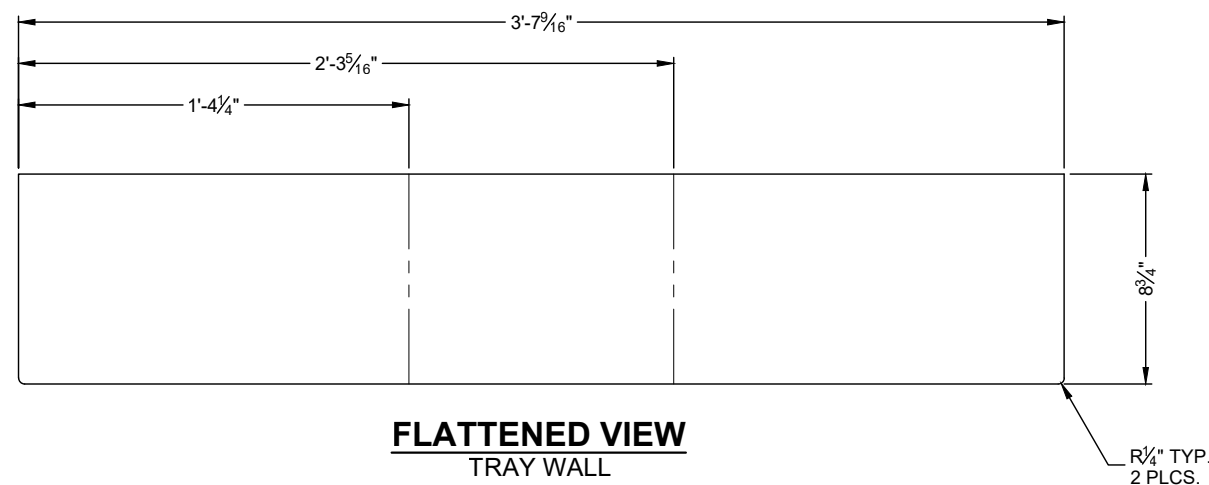
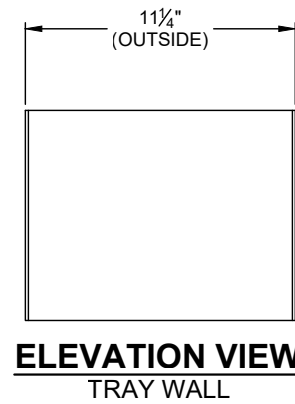
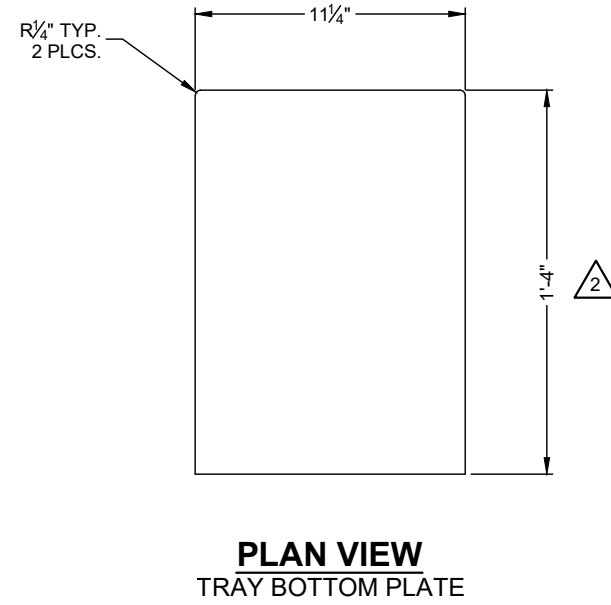
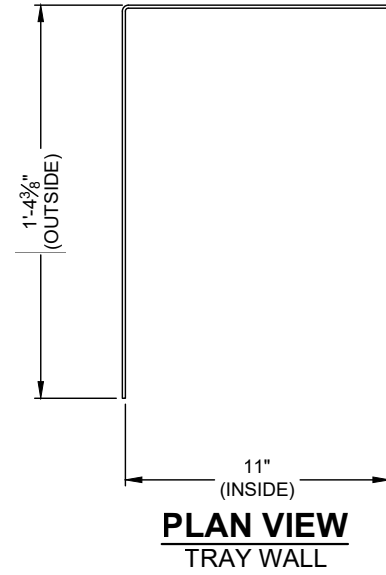
MARK	DATE	REVISION DESCRIPTION	BY
3	3/13/24	CHANGE MOUNTING PAN TO PLATE	NDG
2	7/23/20	EXTENDED BOTTOM PLATE	NDG
1	3/24/17	NEW FORMAT	NDG

GRATE INLET TRAY DETAILS
USE WITH 24" SQUARE TOP SLAB OPENING
MOUNTING PLATE, SUPPORT AND
INDEXER DETAILS

CONTECH
ENGINEERED SOLUTIONS LLC
www.contechES.com
9025 Centre Pointe Dr., Suite 400, West Chester, OH 45689
800-338-1122 513-645-7000 513-645-7995 FAX

DATE:	10/6/16		
DESIGNED:	GWB	DRAWN:	NDG
CHECKED:	GWB	APPROVED:	GWB
PROJECT No.:	N/A	SEQUENCE No.:	N/A
SHEET:	1 OF 2		

26-1289 - 876242 Mazak Foundation



DIMENSIONS ARE IN INCHES DEBUR EDGES BREAK CORNERS
 MAKE ALL TROUGHS AND INLET/OUTLET PLATES IN SETS TO ENSURE FIT
 MATERIAL: 3/16" THICK 5052-H32 ALUMINUM ALLOY
 ALL BEND RADII EQUAL TO MATERIAL THICKNESS

TOLERANCES:
 FRACTIONAL: +/- 1/16 INCH TWO PLACE DECIMAL: 0.12
 ANGULAR: MACH +/-1 INCH, BEND +/-1 DEG. THREE PLACE DECIMAL: 0.060

The design and information shown on this drawing is the property of CONTECH ENGINEERED SOLUTIONS LLC or one of its affiliated companies ("CONTECH"). Neither this drawing nor any part thereof, may be used, reproduced, or transmitted in any form or by any means, electronic or mechanical, including photocopying, recording, or by any information storage and retrieval system, without the prior written consent of CONTECH. Failure to comply with the above conditions shall constitute a breach of contract and CONTECH expressly disclaims any liability or responsibility for such use. If discrepancies between the supplied information upon which the drawing is based and actual field conditions are encountered in the work program, the user shall immediately notify CONTECH in writing. CONTECH shall not be held responsible for re-evaluation of the design. CONTECH accepts no liability for designs based on missing, incomplete or inaccurate information supplied by others.

MARK	DATE	REVISION DESCRIPTION	BY
3	3/13/24	CHANGE MOUNTING PAN TO PLATE	NDG
2	7/23/20	EXTENDED BOTTOM PLATE	NDG
1	3/24/17	NEW FORMAT	NDG

GRATE INLET TRAY DETAILS
 USE WITH 24" SQUARE TOP SLAB OPENING
 MOUNTING PLATE, SUPPORT AND
 INDEXER DETAILS

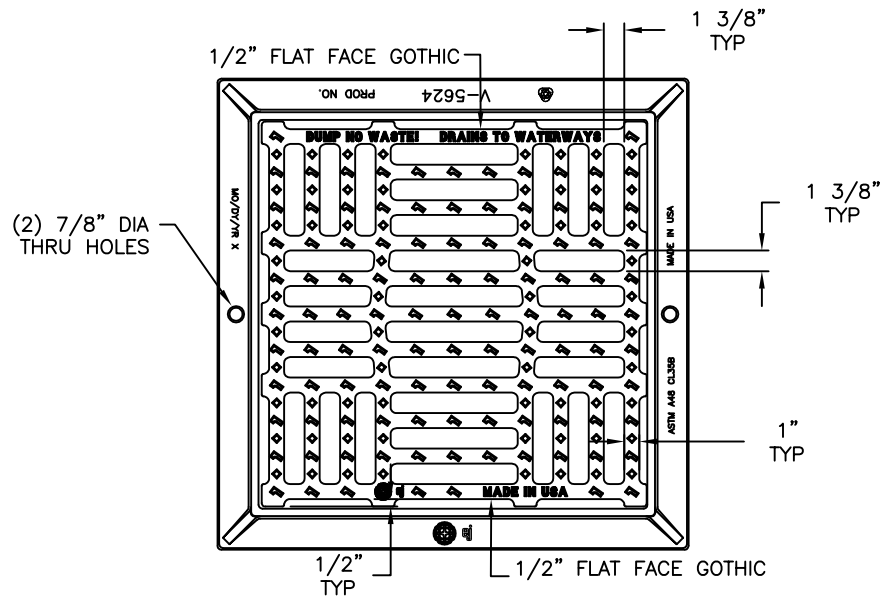
CONTECH ENGINEERED SOLUTIONS LLC
 www.contechES.com
 9025 Centre Pointe Dr., Suite 400, West Chester, OH 45389
 800-335-1122 513-645-7000 513-645-7955 FAX

DATE:	10/6/16
DESIGNED:	GWB
DRAWN:	NDG
CHECKED:	GWB
APPROVED:	GWB
PROJECT No.:	N/A
SEQUENCE No.:	N/A
SHEET:	2 OF 2

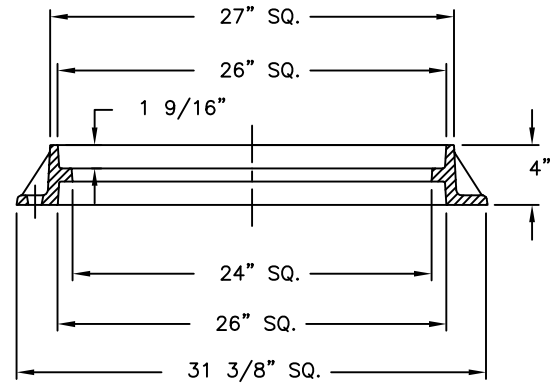
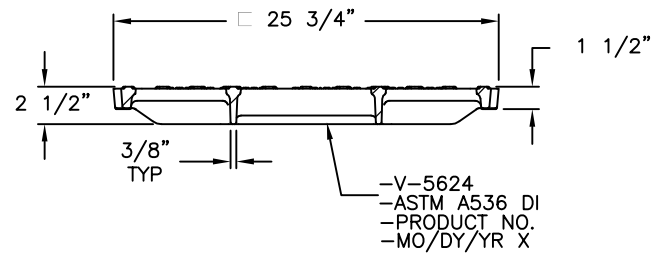
CONTECH
FABRICATION
 DRAWING

I:\COMMON\CAD\TREATMENT\88 PROJECT SPA\GRATE INLET TRAY DETAILS\DWG\24 INCH SQ GRATE INLET TRAY DETAILS.DWG 3/13/2024 12:47 PM

26-1289 - 876242 Mazak Foundation V5624 Assembly



PLAN VIEW



SECTION VIEW

Product Number

45624050A01

Design Features

- Materials
- Frame
Gray Iron (CL35B)
- Grate
Ductile Iron (70-50-05)
- 88 lbs**

-Design Load

- Heavy Duty
- Open Area
318 SQ.IN.

-Coating

- Undipped
- √ Designates Machined Surface

Certification

-
- ASTM A536
- ASTM A48
- Country of Origin: USA

Major Components

- 45624010
- 45624050

Drawing Revision

- 09/01/2017 Designer: MAH
- 9/5/2017 Revised By: MAH

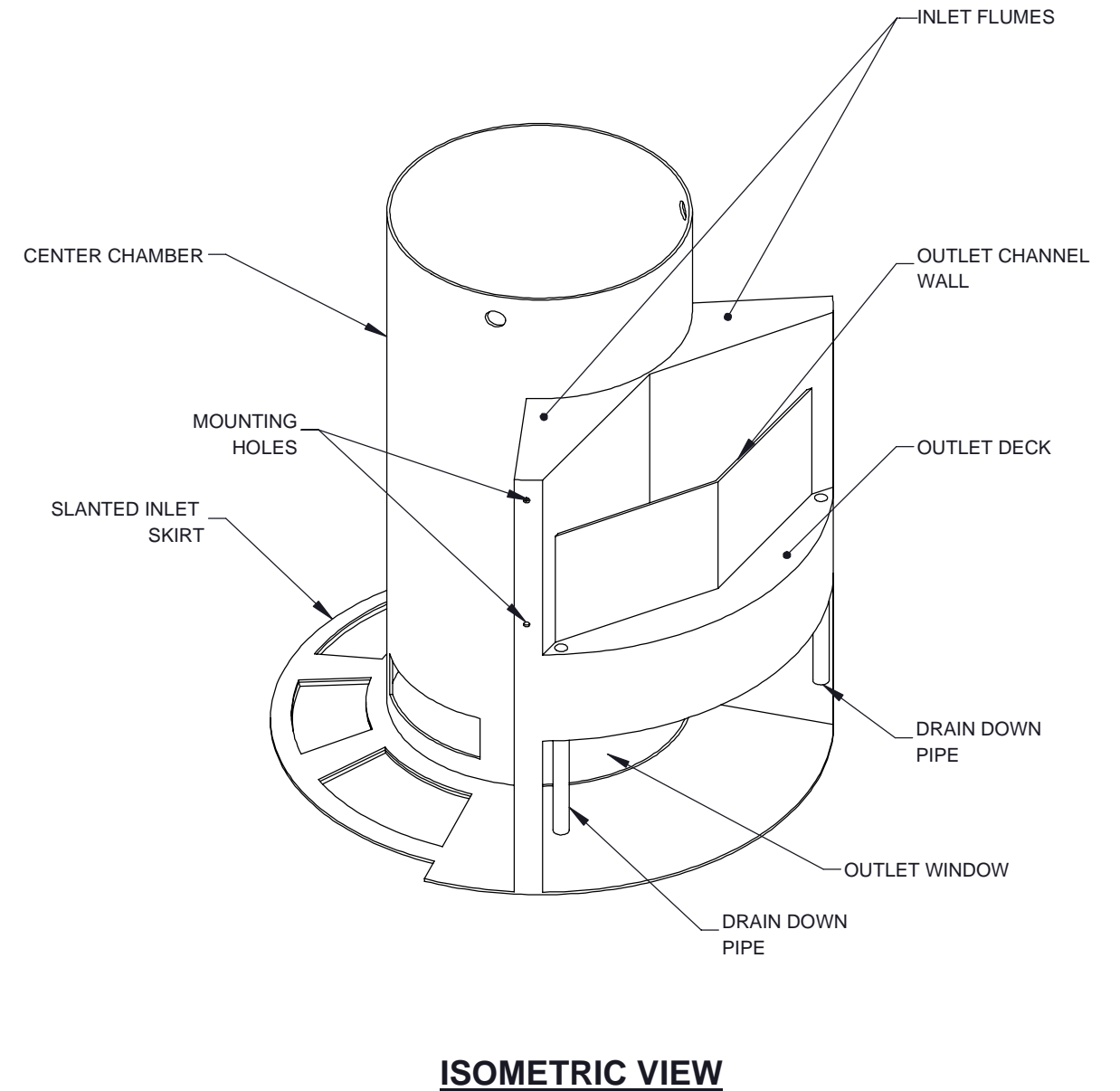
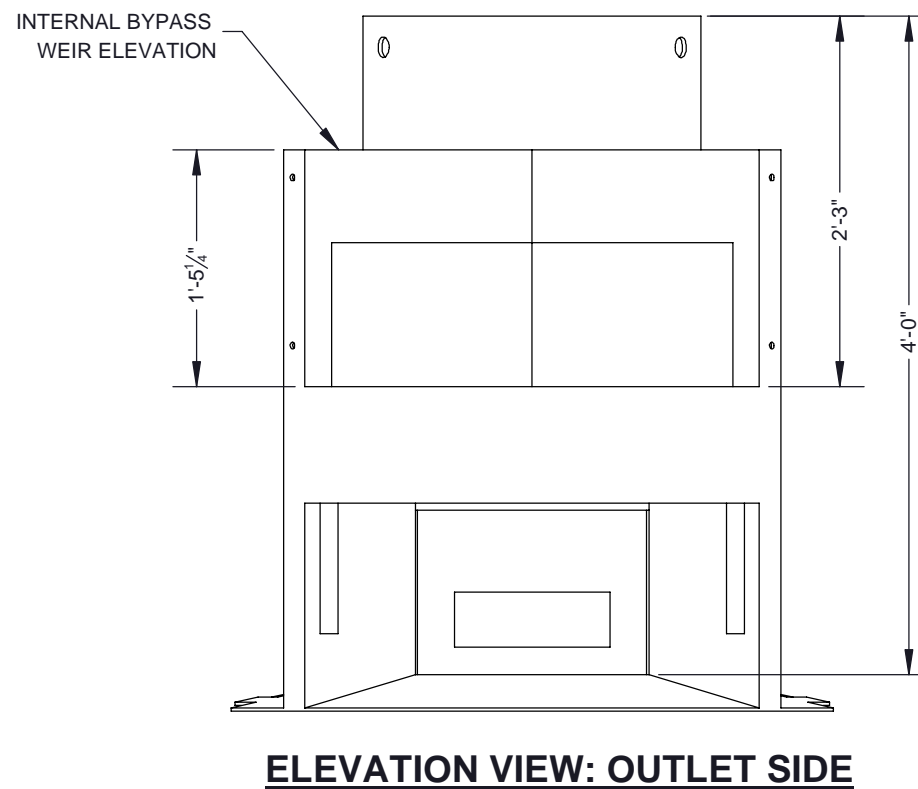
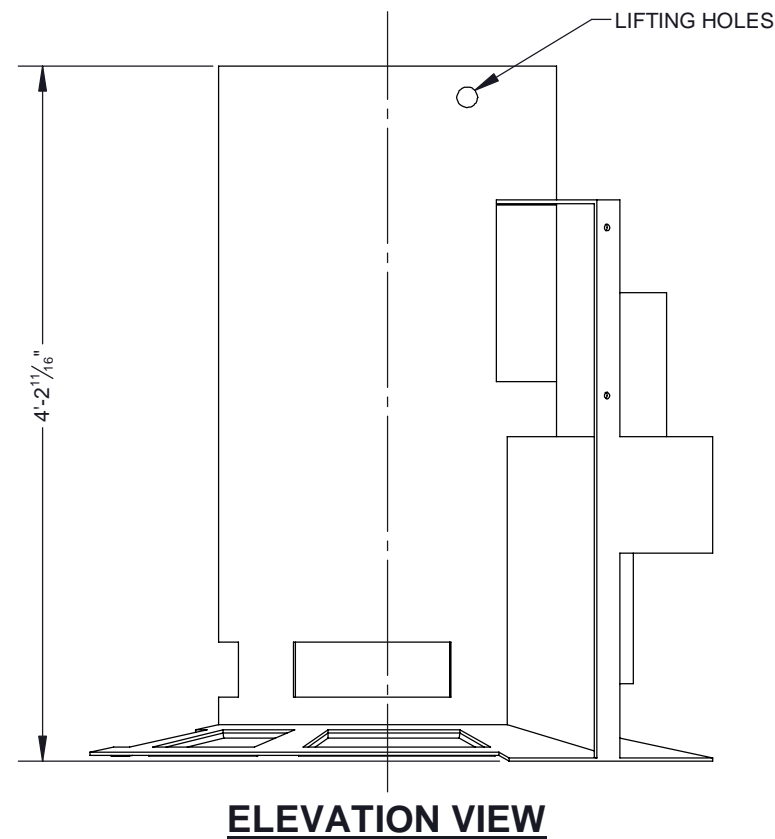
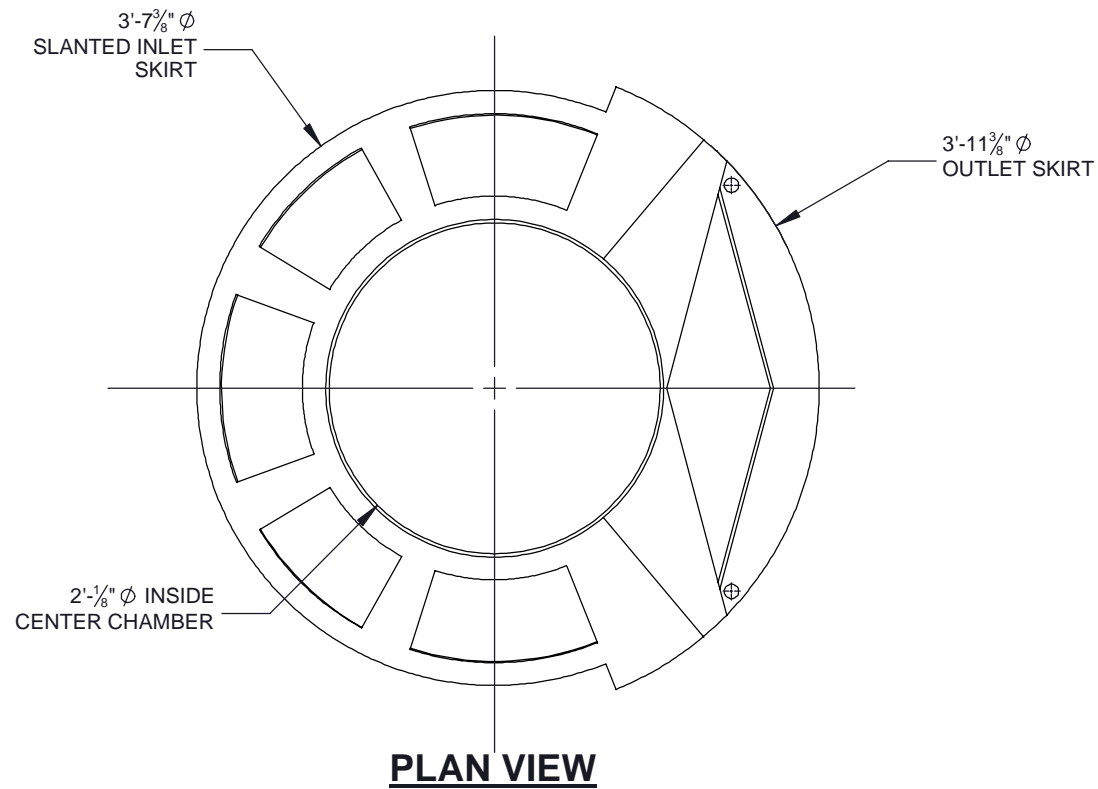
Disclaimer

Weights (lbs./kg) dimensions (inches/mm) and drawings provided for your guidance. We reserve the right to modify specifications without prior notice.

CONFIDENTIAL: This drawing is the property of EJ GROUP, Inc., and embodies confidential information, registered marks, patents, trade secret information, and/or know how that is the property of EJ GROUP, Inc. Copyright © 2013 EJ GROUP, Inc. All rights reserved.

Contact

800 626 4653
ejco.com



NOTES:
1. SEE CASCADE SEPARATOR INSTALLATION GUIDE FOR ADDITIONAL INFORMATION

The design and information shown on this drawing is provided as a service to the project owner, engineer and contractor by Contech Engineered Solutions LLC, or one of its affiliated companies ("Contech"). Neither this drawing, nor any part thereof, may be used, reproduced or modified in any manner without the prior written consent of Contech. Failure to comply is done at the user's own risk and Contech expressly disclaims any liability or responsibility for such use.

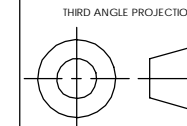
If discrepancies between the supplied information upon which the drawing is based and actual field conditions are encountered as site work progresses, these discrepancies must be reported to Contech immediately for re-evaluation of the design. Contech accepts no liability for designs based on missing, incomplete or inaccurate information supplied by others.

CASCADE
separator™

CONTECH
ENGINEERED SOLUTIONS LLC

www.ContechES.com
9025 Centre Pointe Dr., Suite 400, West Chester, OH 45069
800-338-1122 513-645-7000 513-645-7993 FAX

REFERENCE DETAIL
INTERNALS CS-4
CASCADE SEPARATOR



UNLESS OTHERWISE SPECIFIED
DIMENSIONS ARE IN INCHES

TOLERANCES:
FRACTIONAL ± 1/16
ANGLES ± 1 DEGREE
TWO PLACE DECIMAL ± 0.06
THREE PLACE DECIMAL ± 0.030

PART NUMBER: 325-003949		
APPROVED BY: M. BROOKS	DRAWN BY: M. BROOKS	
APPROVED BY DATE: 2021.10.21	DRAWN BY DATE: 2021.09.14	REV: B
SCALE: N/A	SHEET 1 OF 1	