

Job Name: 26-1289 876242 Mazak Foundation
 Job Location: Elsmere, KY
 Contractor: Contech Engineering Solutions

Plant: Beaver Dam
 2/13/2026 10:05:01 AM

Tech: S. Felletter
 PC: T. Sekula



Structure ID: 15-CS-4

P4 MH048LD12-24SQ

MH FLAT TOP w/24"x24" Hole F/G

- P5) 24" x 24" - CASTING HEIGHT - 4"
- P4) 48" - MH FLAT TOP w/24"x24" Hole F/G - 12"
- P3) 48" - MH RISER Custom Ht T/G - 28"
- P2) 48" - MH RISER T/G - 72"
- P1) 48" - MH BASE T/h - 18"
- 1) ASSEMBLY REQUIRED
- 1) CVSTENCILING
- 3) 48" - Conseal CS-102 1.00"
- 1) 24" x 24" - Conseal CS-102 1.00"
- 2) Hole - 24"

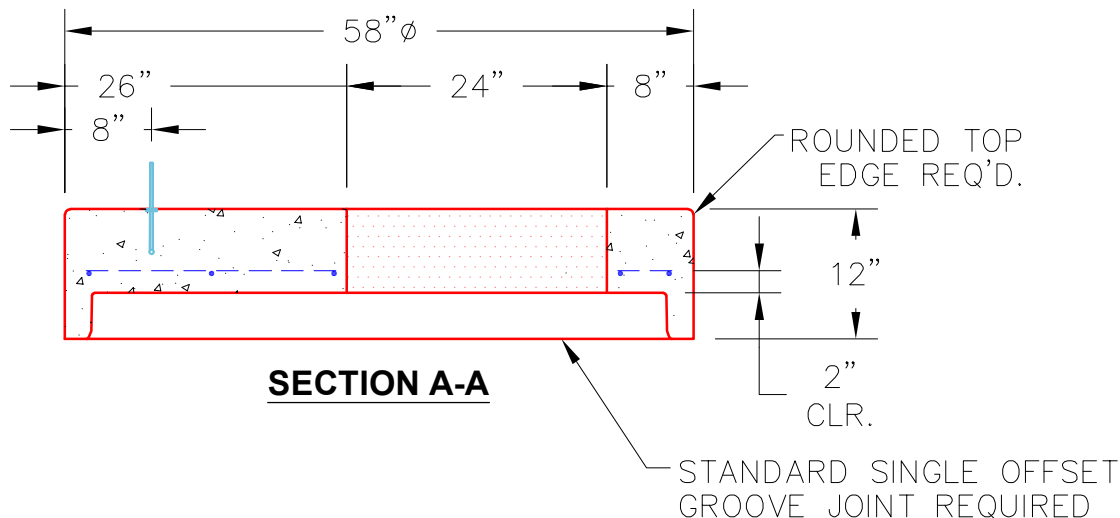
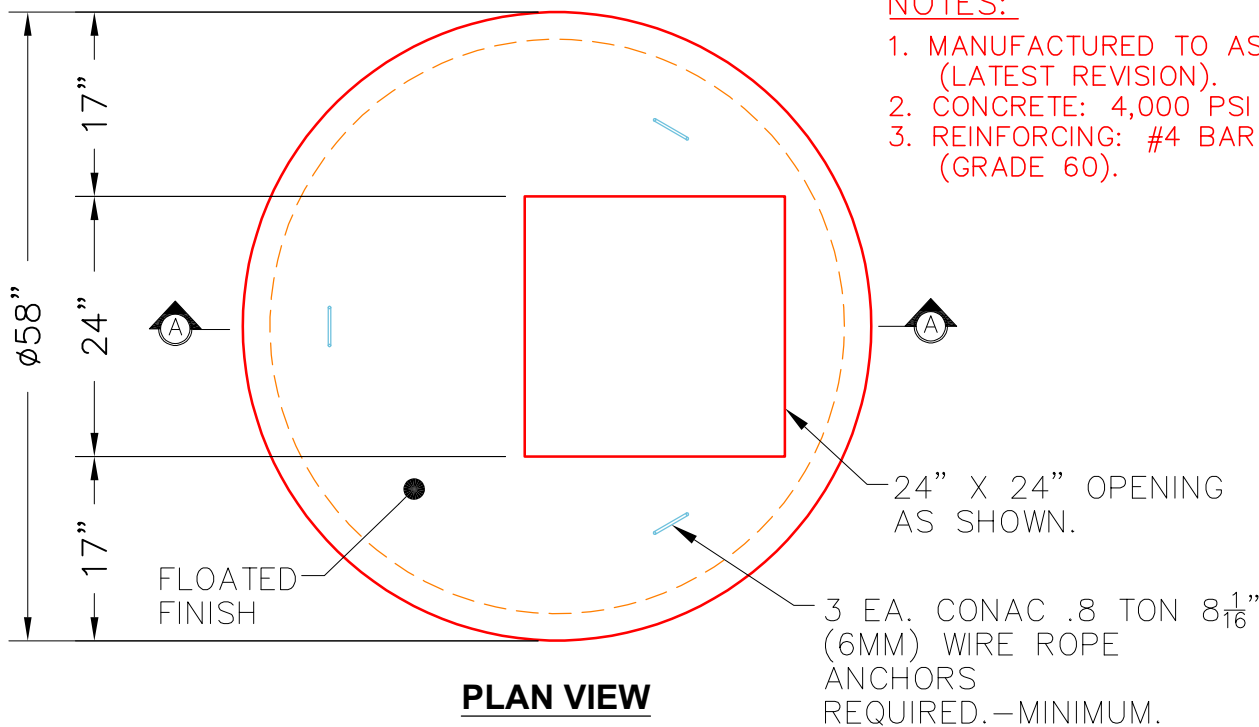
	0 lb
	1500 lb
	1956 lb
	4635 lb
	2588 lb
	0 lb
	0 lb
	0 lb
	0 lb
	0 lb
	0 lb
Structure Total:	10679 lb

Structure Notes:
 4" CASTING BY OTHERS

 LIFTING ANCHORS TO BE INSTALLED
 ON THE OUTSIDE OF THE STRUCTURE

 ICAST TO INSTALL THE INTERNALS

 CONTECH'S LOGO AS WELL AS THE
 INLET AND OUTLET MUST BE
 STENCILED ONTO THE STRUCTURE



Coating (Int):
 Coating (Ext):

Seam Up: Flat
 Seam Dn: Groove

Wall Thickness: 5"

Height (Ext): 12"

Weight (Net): 1500 lb
 Volume (Net): 0.37cu.yd