

Job Name: 26-1237 860558 Beulah Crossing Townhomes  
 Job Location: Lexington, KY  
 Contractor: Contech Engineering Solutions

Plant: Beaver Dam  
 2/5/2026 1:26:26 PM

Tech: S. Felletter  
 PC: T. Sekula



**Structure ID: 15-CS-3**

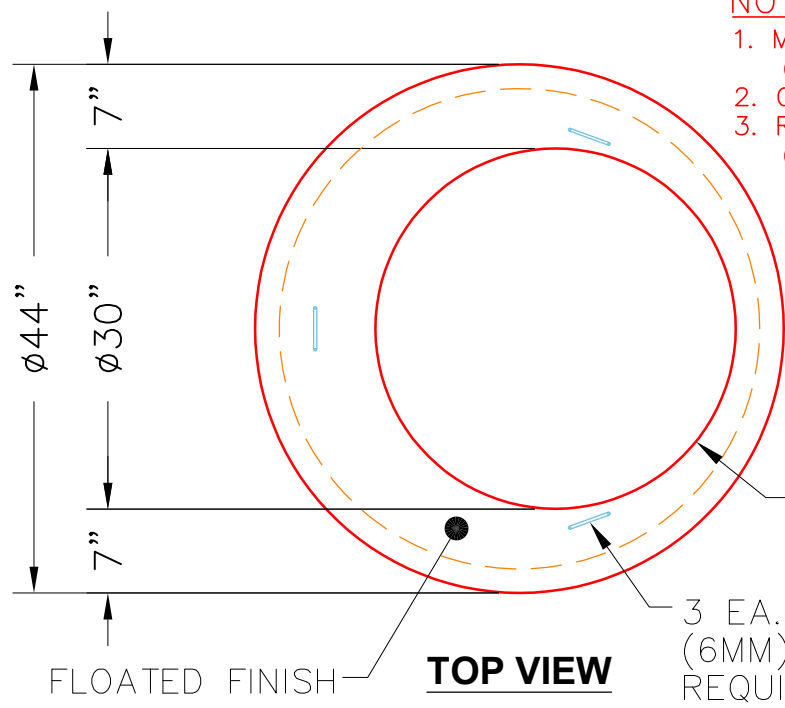
**P3 MH036LD10-30ECC**

**MH FLAT LID w/30in ECC Hole F/G**

- P4) 30" - CASTING HEIGHT - 0"
- P3) 36" - MH FLAT LID w/30in ECC Hole F/G - 10"
- P2) 36" - MH RISER T/G - 60"
- P1) 36" - MH BASE T/n - 12"
- 1) ASSEMBLY REQUIRED
- 1) CVSTENCILING
- 2) 36" - Conseal CS-102 1.00"
- 2) Hole - 16

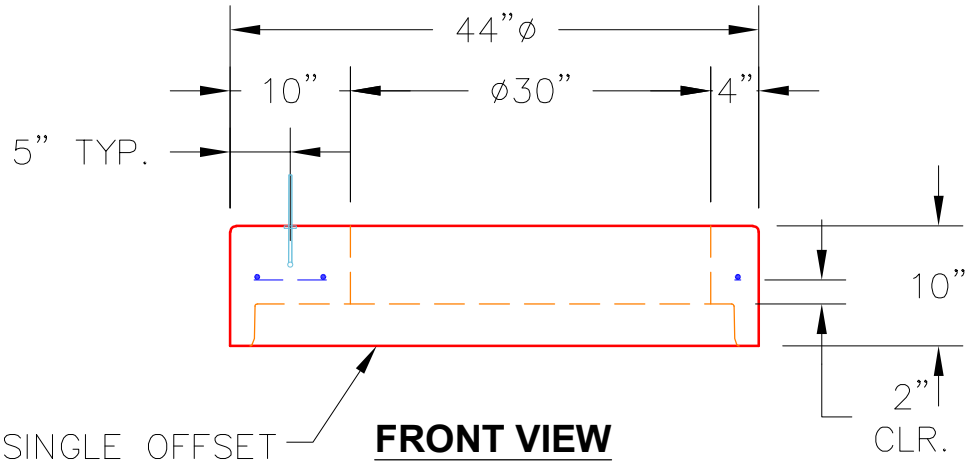
Structure Notes:  
 4" CASTING BY OTHERS  
 LIFTING ANCHORS TO BE INSTALLED ON THE OUTSIDE OF THE STRUCTURE  
 ICAST TO INSTALL THE INTERNALS  
 CONTECH'S LOGO AS WELL AS THE INLET AND OUTLET MUST BE STENCILED ONTO THE STRUCTURE

	0 lb
	683 lb
	2378 lb
	1272 lb
	0 lb
	0 lb
	0 lb
	0 lb
Structure Total:	4332 lb



- NOTES:**
1. MANUFACTURED TO ASTM C-478 (LATEST REVISION).
  2. CONCRETE: 4,000 PSI AT 28 DAYS.
  3. REINFORCING: #5 BAR @ 6" O.C. E.W. (GRADE 60).

30"Ø OPENING AS SHOWN.  
 3 EA. CONAC .8 TON 8<sup>1</sup>/<sub>16</sub>" (6MM) WIRE ROPE ANCHORS REQUIRED.—MINIMUM.



STANDARD SINGLE OFFSET GROOVE JOINT REQUIRED

Coating (Int): Coating (Ext):	Seam Up: Flat Seam Dn: Groove	Wall Thickness: 4"	Height (Ext): 10"	Weight (Net): 683 lb Volume (Net): 0.17cu.yd
----------------------------------	----------------------------------	--------------------	-------------------	---